

4" Single Handle Lavatory Faucet

Product Spec Sheet



FEATURES & BENEFITS

- This Product Contains Less Than 0.25% Weighted Average Lead Content On Wetted Surfaces
- Acrylic Round Handle
- Stainless Steel Ball Valve
- Brass Pop-up
- Max Flow Rate 1.5 GPM(5.7 LPM) at 60 PSI (ASME.A112.18.1)

VE-502C
Chrome Finish

VE-502CL
Less Pop-up
Chrome Finish

APPROVALS:

Meets or Exceeds The Following:

- * ANSI/ASME A112.18.1
- * ANSI/NSF 61 – Sec. 9
- * IAPMO/UPC
- * CA AB1953



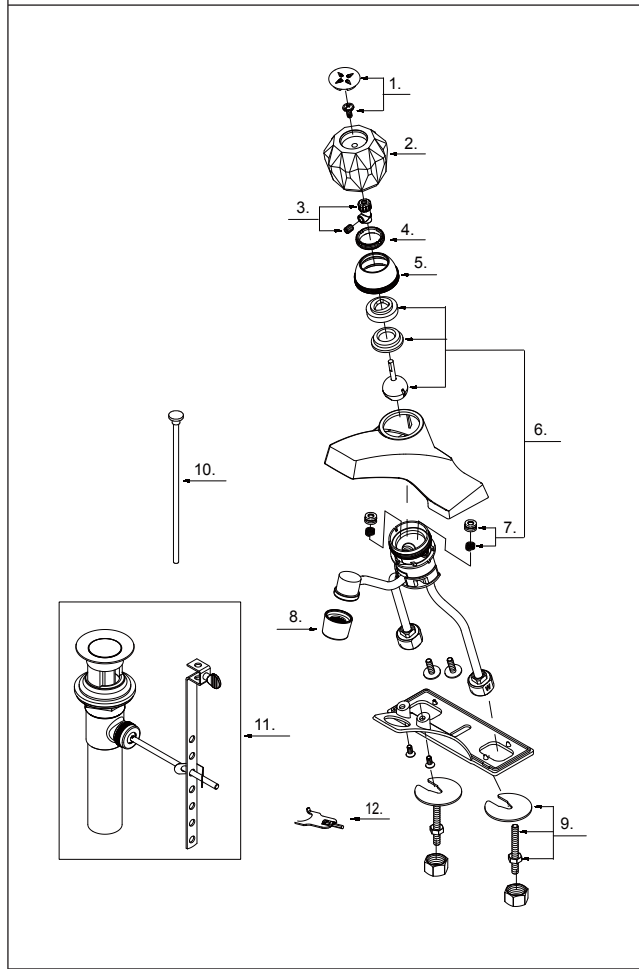
CALIFORNIA:
TEXAS:
NEW YORK:

TEL: 866-532-8306
TEL: 800-935-5456
TEL: 800-431-2082

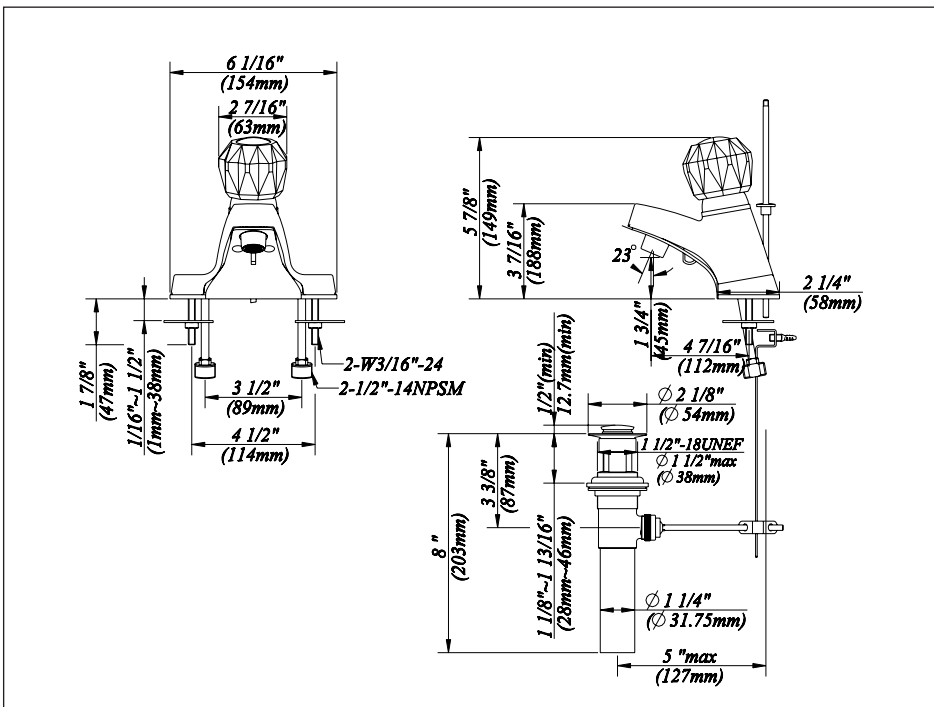
FAX: 866-532-8307
FAX: 800-683-4247
FAX: 800-640-2252

4" Single Handle Lavatory Faucet

No.	Name	Material
1	Index Button - Hot/Cold	Plastic & Stainless Steel
2	Acrylic Handle	Acrylic
3	Handle Adaptor	Plastic
4	Locking Nut	Brass
5	Trim Cap	Zinc Alloy
6	Ball Valve Assembly	Plastic & Stainless Steel
7	Seat & Spring Set	Plastic & Stainless Steel
8	Aerator	Plastic & Brass
9	Mounting Hardware	Stainless Steel
10	Lift Rod	Brass
11	Pop-up Assembly	Brass
12	Wrench	Stainless Steel



Product Spec Sheet



APPROVALS:

Meets or Exceeds The Following:

- * ANSI/ASME A112.18.1
- * ANSI/NSF 61 – Sec. 9
- * IAPMO/UPC
- * CA AB1953

CALIFORNIA: TEL: 866-532-8306 FAX: 866-532-8307
TEXAS: TEL: 800-935-5456 FAX: 800-683-4247
NEW YORK: TEL: 800-431-2082 FAX: 800-640-2252