

## **4" Two Handle Bar Faucet**

# **Product Spec Sheet**



### **FEATURES & BENEFITS**

- This Product Contains Less Than 0.25% Weighted Average Lead Content On Wetted Surfaces
- Wrist Blade Handles
- Washerless Cartridges
- Max Flow Rate 1.5 GPM(5.7 LPM) at 60 PSI (ASME.A112.18.1)

CL-320CB  
Chrome Finish

#### **APPROVALS:**

**Meets or Exceeds The Following:**

- \* ANSI/ASME A112.18.1
- \* ANSI/NSF 61 – Sec. 9
- \* IAPMO/UPC
- \* CA AB1953



NSF / ANSI 372

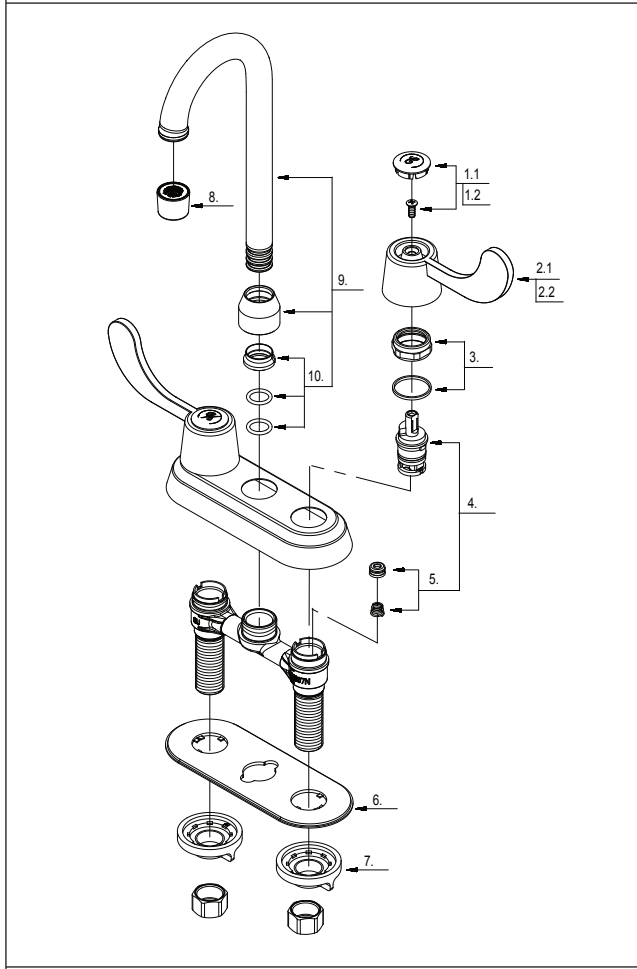


Certified to NSF/ANSI 41  
Section 4

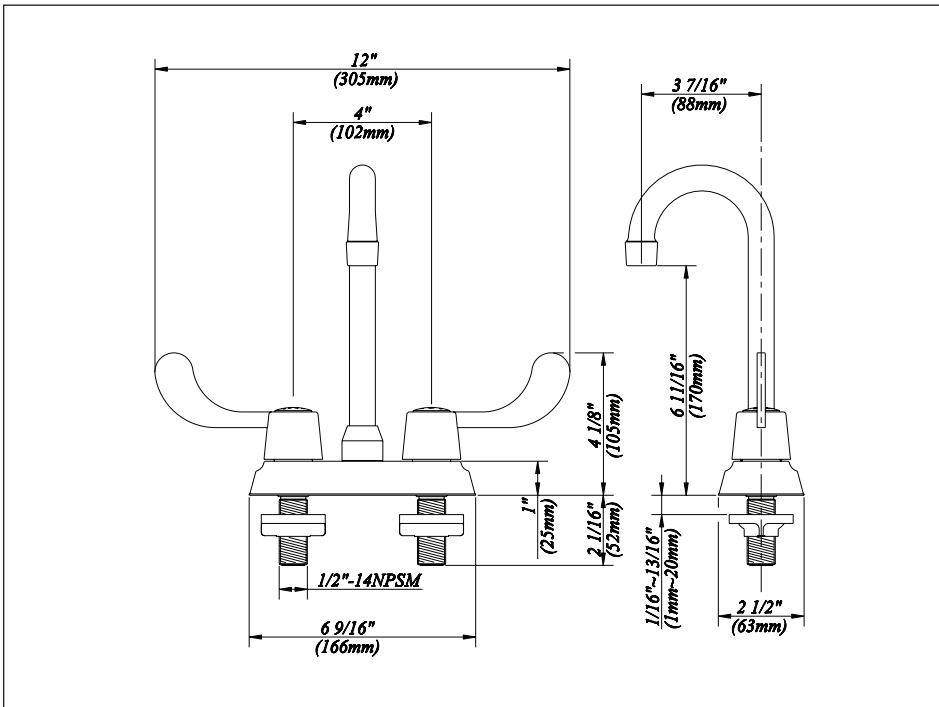


# 4" Two Handle Bar Faucet

No.	Name	Material
1.1	Index Button-Cold	Plastic
1.2	Index Button-Hot	Plastic
2.1	Metal Handle-Cold	Zinc Alloy
2.2	Metal Handle-Hot	Zinc Alloy
3	Retainer Nut & Washer	Brass & Plastic
4	Cartridge Assembly	Stainless Steel & Plastic
5	Seat & Spring Set * 2	Plastic & Stainless Steel
6	Putty Plate	Plastic
7	Lock Nut Set	Plastic
8	Aerator	Brass & Plastic
9	Spout Assembly	Brass
10	Spout Seal Kit	Plastic



**Product Spec Sheet**



**APPROVALS:**  
**Meets or Exceeds The Following:**

- \* ANSI/ASME A112.18.1
- \* ANSI/NSF 61 – Sec. 9
- \* IAPMO/UPC
- \* CA AB1953