

## SECTORLITE

- Super lightweight and flexible polycarbonate frame / lens construction
- Impact protection meets ANSI Z87.1 and CSA Z94.3 safety standards
- Soft rubber on temple tail inserts and nose bridge
- Exceeds UV-A / UV-B / UV-C



SMOKE



MIRROR



YELLOW



CLEAR



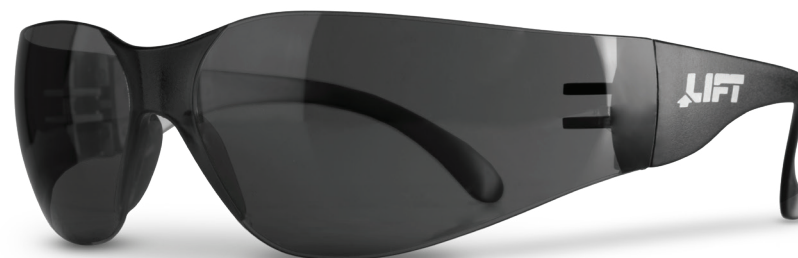
AMBER

STYLE	PART #	BULK PART #
MIRROR	ESE-9M	ESE-9MB
SMOKE	ESE-6ST	ESE-6STB
CLEAR	ESE-6C	ESE-6CB
YELLOW	ESE-6LT	ESE-6LTB

STYLE	ANTI-FOG BULKPART #
SMOKE	ESE-6STFB
CLEAR	ESE-6CFB
AMBER	ESE-13AFB

## TEAR OFF

- Super lightweight frameless design
- Impact protection meets ANSI Z87.1 safety standards
- Exceeds UV-A / UV-B / UV-C



SMOKE



CLEAR

STYLE	PART #
SMOKE	ETO-14STB
CLEAR	ETO-14CB