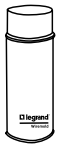


2000 SERIES® RACEWAY

2000 Series Raceway Ordering Information (continued)

Spray Paint



PART NUMBERS:
IWE-S (Ivory)
GWE-S (Gray)

Used for touching up large areas.
 Contains 12 oz. of paint.

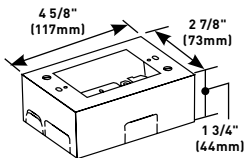
Touch-Up Paint Pen



PART NUMBERS:
IWE-P (Ivory)
GWE-P (Gray)

Used for touching up small areas.
 Contains 0.3 oz. of paint.

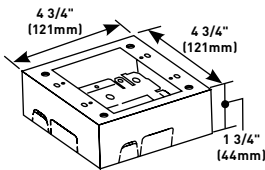
Single-Gang Device Box



PART NUMBERS:
V2048 (Ivory)
G2048 (Gray)

Cover has twistouts for 2000, 500, and 700 Series Raceways. Base has 1/2" trade size KO and rectangular KO for extension to wall box. Base has #10 threaded hole for ground connection.

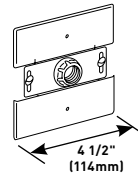
Two-Gang Device Box



PART NUMBERS:
V2048-2 (Ivory)
G2048-2 (Gray)

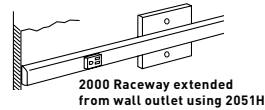
Cover has twistouts for 2000, 500, and 700 Series Raceways. Base has 1/2" trade size KO and rectangular KO for extension to wall box. Base has #10 threaded hole for ground connection.

Flush Plate Adapter



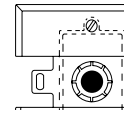
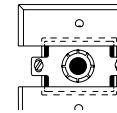
PART NUMBERS:
V2051H (Ivory)
G2051H (Gray)

Feeds 2000 Series Raceway from an existing wall outlet. Equipped with 1/2" trade size threaded stud, toothed lock washer for grounding, and conduit bushing.

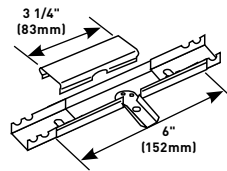


2051H fastened to horizontally mounted wall box.

2051H fastened to vertically mounted wall box.

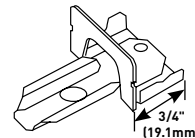


V2089 Side Reducing Connector




Connects 2000 Series Raceway with 500 Series Raceway through the side of 2000 Series Raceway.

V2089E End Reducing Connector



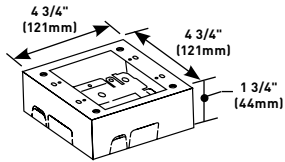
Connects 2000 Series Raceway with 500 Series Raceway through the end of 2000 Series Raceway.

NOTE: Parts identified with this symbol  are Certified to Canadian Safety Standards for sale in Canada. When ordering these products, change the "V" color prefix to "CV" or the "G" color prefix to "CG" to denote the Canadian versions.

PLUGMOLD® 2000 SERIES™

Plugmold 2000 Series Ordering Information (continued)

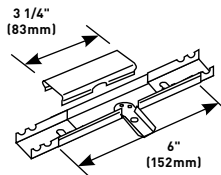
Two-Gang Device Box



PART NUMBERS:
V2048-2 (Ivory)
WH2048-2 (White)
G2048-2 (Gray)
BK2048-2 (Black)
S2048-2 (Stainless Steel)

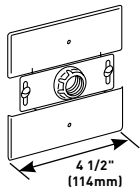
Cover has twistouts for 2000, 500 and 700 Series Raceways. Base has 1/2" trade size KO and rectangular KO for extension to wall box. Base has No.10 threaded hole for ground connection.

V2089 Side Reducing Connector



Connects 2000 Series Plugmold with 500 Series Raceway through the side of 2000 Series Plugmold.

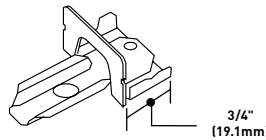
Flush Plate Adapter



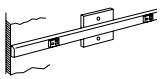
PART NUMBERS:
V2051H (Ivory)
WH2051H (White)
G2051H (Gray)
BK2051H (Black)
S2051H (Stainless Steel)

Feeds 2000 Series Plugmold from an existing wall outlet. Equipped with 1/2" (12.7mm) threaded stud, toothed lock washer for grounding, threaded hole for and conduit bushing.

V2089E End Reducing Connector



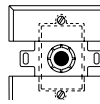
Connects 2000 Series Plugmold with 500 Series Raceway through the end of 2000 Series Plugmold.



Plugmold 2000 extended from wall outlet using V2051H.



V2051H fastened to horizontally mounted wall box.



V2051H fastened to vertically mounted wall box.

2000 Series Interconnectivity Fittings

FROM	CONNECTION REQUIRED		USE CATALOG NUMBER
		TO	
500 Series Raceway	Side of Plugmold 2000 Series		V2089, V2048, V2048-2
500 Series Raceway	End of Plugmold 2000 Series		V2089E, V2048, V2048-2
Existing Outlet	Plugmold 2000 Series		V2051H
1/2" trade size Conduit or Armored Cable	End of Plugmold 2000 Series		V2010A2, V2010A3