

# SLC CLASS G FUSES

480/600 VAC • Time-Delay • 1/2-60 Amperes



## Description

Littelfuse SLC fuses provide cost effective branch circuit protection. Fuse length varies to prevent over-fusing. Compact Class G fuses were the first fuse series to approach midjet fuse dimensions and meet NEC® requirements for branch-circuit protection.

## Applications

- Branch circuit protection

## Features/Benefits

- Branch circuit rated
- Current-limiting
- 100 kA interrupting rating
- 600 VAC rated 1/2-20 A

## Web Resources

TC Curves, downloadable CAD drawings and other technical information: [www.littelfuse.com/slc](http://www.littelfuse.com/slc)

## Specifications

**Voltage Ratings:** 600 VAC (1/2 – 20 A)  
480 VAC (25 – 60 A)  
170 VDC (1/2 – 60 A) (Littelfuse self-certified)

**Interrupting Ratings:** AC: 100 kA rms symmetrical  
DC: 10 kA

**Ampere Range:** 1/2 – 60 A

**Approvals:** Standard 248-5, Class G  
UL Listed (File No. E81895)  
CSA Certified (File No. LR29862)  
Federal Specification WF-1814 (QPL-W-F-1814)

## Ordering Information

AMPERE RATINGS						
1/2	3	6	12	25	40	60
1	4	8	15	30	45	
2	5	10	20	35	50	

SERIES	AMPERAGE	CATALOG NUMBER	SYSTEM NUMBER
SLC	10	SLC010	OSLC010.T

AMPERES	REFER TO FIG. NO.	DIMENSIONS IN INCHES (mm)			
		A	B	C	D
1/2 – 15	1	1 5/16 (33.3)	3/8 (9.5)	9/32 (7.1)	13/32 (10.3)
20	1	1 13/32 (35.7)	3/8 (9.5)	9/32 (7.1)	13/32 (10.3)
25, 30	1	1 5/8 (41.3)	3/8 (9.5)	9/32 (7.1)	13/32 (10.3)
35 – 60	1	2 1/4 (57.2)	3/8 (9.5)	1/2 (12.7)	13/32 (10.3)

## Recommended Fuseholders

LG300 Series  
L30030G Series

## Dimensions in inches (mm)

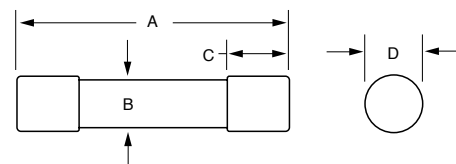


Fig. 1

## Time Current Curve

