

CSR240 CSR240-8 CSR INDUSTRIAL

TWO LAMP RAPID START

TYPE _____

JOB INFORMATION _____

SPECIFICATIONS:

HOUSING

Die formed steel with knockouts for stems or chain hangers.

REFLECTOR

Die embossed with transverse ribs for maximum rigidity. Available with apertures for uplight.

BALLASTS

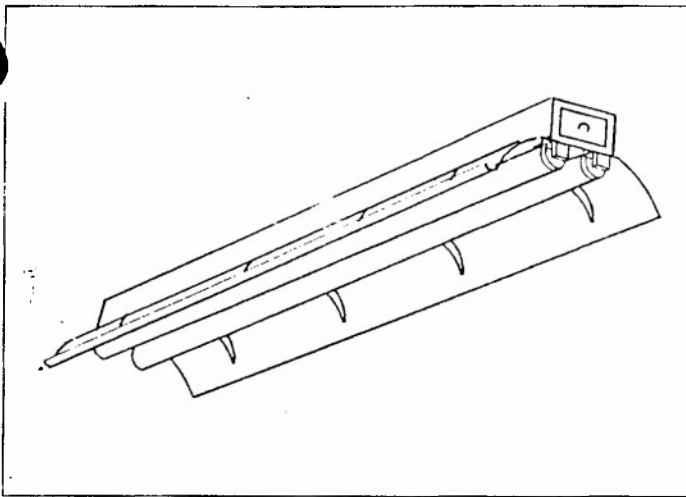
Energy efficient, 40 Watt Rapid Start, thermally protected, automatic resetting, Class P, high power factor, CBM, sound rated A, unless otherwise specified.

FINISH

All parts pre-painted with high gloss baked white enamel, minimum reflectance 86%, applied over iron phosphate pre-treatment for maximum adhesion and rust resistance.

LABELS

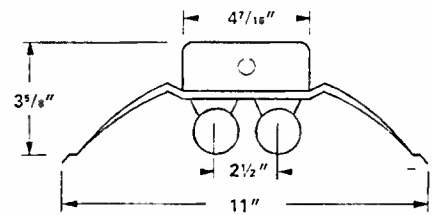
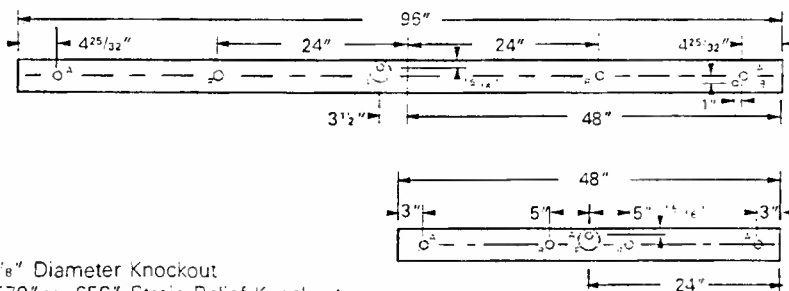
All fixtures carry the U.L. label. (CSA approval available. Use Suffix "CSA").



FEATURES:

- Available in 4' and 8' lengths.
- Solid reflectors with optional uplight.
- Rotary lock tombstone lampholders.
- 2½" lamp spacing.
- For individual or continuous row mounting.
- Channel ends double as joiners.
- Reflector aligners supplied on 8' fixtures.

Cross Section



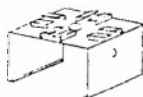
- A - 7/8" Diameter Knockout
 B - 570" x .656" Strain Relief Knockout
 F - 2" Diameter Knockout
 R - 1 1/16" Diameter Knockout

NOTE: All Non-Shielded (strip) fixtures - Deduct 1/16" from overall dimension for continuous row mounting. Dimensions shown included end panel. All dimensions are in inches; dimensions are subject to change without notice. Please consult factory or check sample for verification.

Mounting Accessories



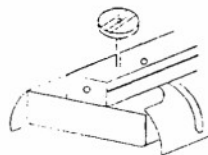
ZT-60F
Zip Tee Hanger



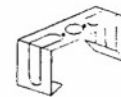
ZT-60
Zip-Tee Hanger



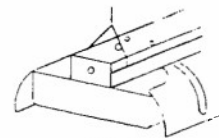
CS-2
Ceiling Spacer



S-18 Stem
and Canopy Set



CL-60
Slide Clamp Hanger



HC-3
Chain Set