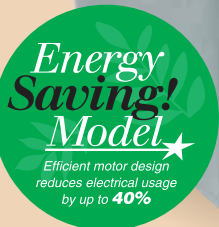


# Liberty Pumps®

## Model 405



U.S. Patents #7520736 & 7563082



**Commercial  
Drain Pump  
High-Head  
High Temperature**

**1/2 hp  
3/8" solids-handling**

**Featuring QuickTree®  
technology for easy  
switch access!**

### **Features:**

- Factory pre-assembled, ready to install
- Fully automatic operation
- Handles fluid temperatures to 180 degrees F. (not designed for use with chemicals.)
- Separate access cover for easy switch inspection
  - 2" inlet
  - 2" vent
  - 2" discharge
- Integrally molded rubber gasket for a superior gas-tight seal

### **Applications Include:**

Bar sinks, laundry trays, multi-compartment utility sinks, dehumidifiers, dishwashers and gray wastewater drainage below gravity lines

innovate. evolve.

# MODEL 405 & 405HV

## COMMERCIAL DRAIN PUMP

### FEATURES:

- Factory pre-assembled.
- Fully automatic operation.
- QuickTree® technology allows quick inspection and removal of float switch without disconnecting the plumbing.
- Oil-filled motor with thermal-overload protection.
- Corrosion-resistant polyolefin basin with integrally molded rubber gasket for a superior gas-tight seal.
- Maintenance-free, permanently lubricated sealed bearings.
- 10' power cord with ground plug
- 3/8" Solids-Handling
- 1/2 hp

Maximum fluid temperature 180 degrees F.

Not intended for use with chemicals.

### APPLICATIONS:

- Laundry Trays
- Commercial Sinks
- Bar Sinks
- Dishwashers
- Dehumidifiers
- Wherever gray wastewater drainage is needed below gravity lines.

Specifically designed for higher head applications such as commercial and industrial buildings.

### DIMENSIONAL DATA:

Weight: 16 LBS.

Major Height: 14-1/8"

Major Width: 13-3/4"

Inlet Height (from bottom of basin): 12-5/8"

Total Capacity: 5.5 Gallons

Inlet Size: 2"

Discharge Size: 2"

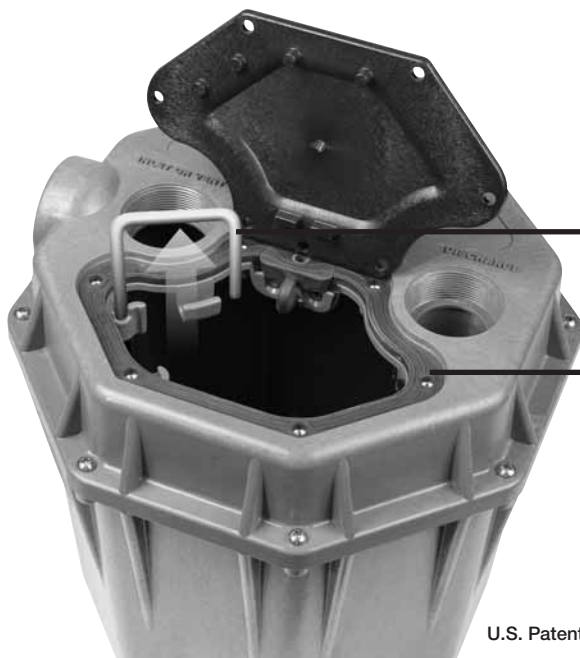
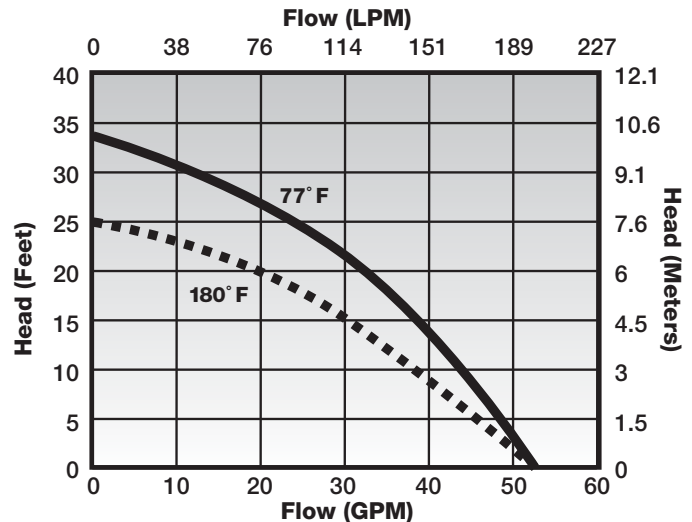
Vent Size: 2"

### MOTOR SPECIFICATIONS:

MODELS	HP	VOLTS	HZ	AMPS
405	1/2	115	60	7.3
405HV	1/2	208-230	60	3.5

3450 RPM. Oil filled, Thermally Protected

### PERFORMANCE CURVE 60 Hz



QuickTree technology allows easy removal of float without disconnecting plumbing or pulling the pump

Heavy-Duty integrally molded rubber gasket provides a superior seal. 10' stack test approved

U.S. Patents #7520736 & 7563082

Specifications are subject to change without notice.



Liberty Pumps • 7000 Apple Tree Avenue • Bergen, New York 14416 • Phone 800-543-2550 Fax (585) 494-1839

[www.libertypumps.com](http://www.libertypumps.com)

Copyright © Liberty Pumps, Inc. 2012  
All rights reserved. LLIT4500-R02/12