

SUBMITTAL SHEET

JOB NAME _____ ITEM TAG _____

JOB LOCATION _____ PART NUMBER _____

CONTRACTOR _____ DATE _____

ENGINEER APPROVAL _____ DATE _____

LEAD FREE BRONZE Y-STRAINER

T/S-15 No-lead

Lead-free design is suitable for all California and Vermont potable water installations

Heavy-duty, full-pattern bronze construction resists pipeline stresses and distortion

Threaded or sweat end connections

Standardly equipped with a 304 stainless steel 20-mesh screen or 1/16" hole diameter perforated strainer

Square-head closure plug furnished

Ideal for protecting downstream components, by trapping and holding debris.

Working Pressure, Non-Shock (PSI)

Cold working pressure (CWP): 300

Saturated steam (WSP): 150

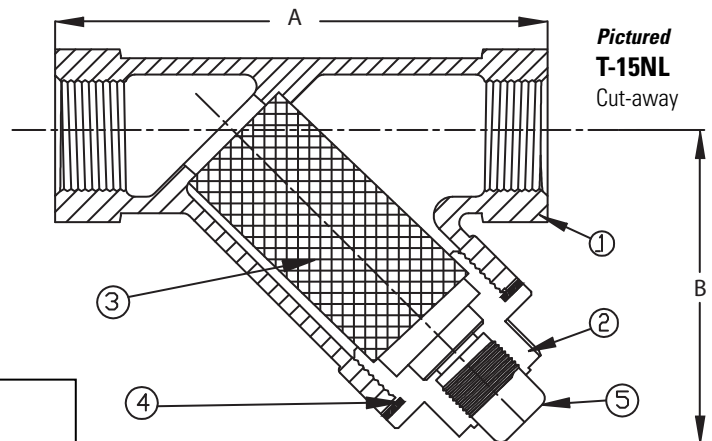
Screen and Strainer Type

20-Mesh screen 1/4" - 2"

1/16" Perf. Strainer 2-1/2" & 3"

Replacement 20-Mesh or optional 40 or 80 Mesh screens available

- Complies with California and Vermont lead-free requirements, as certified by the Water Quality Association
- Female threaded ends comply with ANSI/ASME B1.20.1
- Solder cup ends comply with ANSI/ASME B16.18

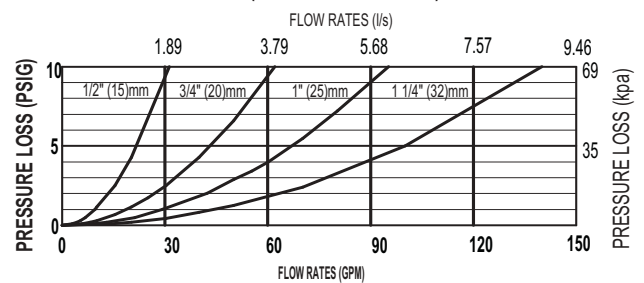


Pictured T-15NL
Cut-away

MATERIAL SPECIFICATION		
PART	MATERIAL	SPECIFICATION
1 Body	Lead-free cast bronze	ASTM B584 UNS C89836
2 Cap	Lead-free cast bronze	ASTM B584 UNS C89836
3 Screen or Strainer	Stainless Steel	ASTM A240 UNS S30400 (304)
4 Cap gasket	Nitrilic bonded non-asbestos fiber	Commercial grade
5 Closure (blowoff) plug	Lead-free cast bronze	ASTM B584 UNS C89836

DIMENSIONS						
Size	A (IPS)	B (IPS)	Plug NPT	A (CxC)	B (CxC)	Plug NPT
1/4"	3.21	2.17	3/8"			
3/8"	3.21	2.17	3/8"			
1/2"	3.21	2.17	3/8"	3.35	2.21	3/8"
3/4"	3.96	2.76	3/8"	4.32	2.68	3/8"
1"	4.53	2.95	1/2"	5.04	3.19	1/2"
1-1/4"	5.34	3.54	1/2"	5.91	3.70	1/2"
1-1/2"	6.22	3.86	1/2"	6.89	4.13	1/2"
2"	7.50	5.43	1/2"	8.62	5.12	1/2"
2-1/2"	9.06	5.91	1/2"	9.06	5.91	1/2"
3"	10.20	6.30	1/2"	10.20	6.30	1/2"

1/2" to 1 1/4" (STANDARD & METRIC)



1 1/2" to 3" (STANDARD & METRIC)

