

SUBMITTAL SHEET

JOB NAME		ITEM TAG	
JOB LOCATION		PART NUMBER	
CONTRACTOR	DATE		
ENGINEER APPROVAL	DATE		

BRONZE Y-STRAINER

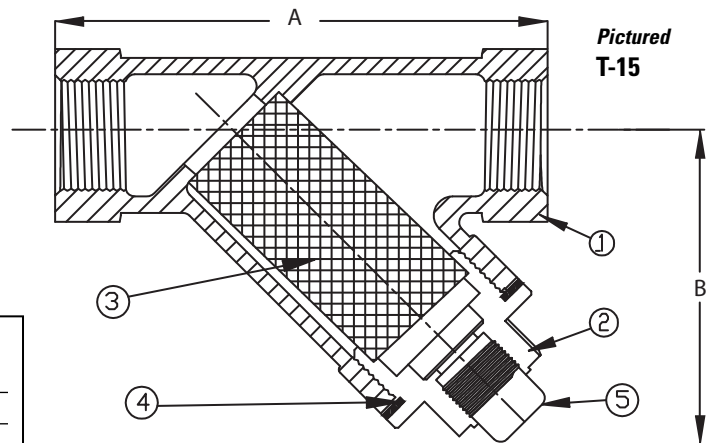
T/S-15

Full-pattern heavy-duty bronze body
Threaded or Sweat Ends
Equipped with 304 SS 20-mesh screen or 1/16" hole diameter perforated strainer
Square-head Closure Plug Furnished
Ideal for protecting downstream components, by trapping and holding debris.

Working Pressure, Non-Shock (PSI)
Saturated Steam: 150
Cold Water, Oil, Gas: 300

Screen and Strainer Type
20-Mesh screen 1/4" - 2"
1/16" Perf. Strainer 2-1/2" & 3"
Replacement 20-Mesh or optional 40 or 80 Mesh screens available

- Bronze material complies with ASTM B584 specifications
- Female threaded ends comply with ANSI/ASME B1.20.1
- Solder cup ends comply with ANSI/ASME B16.18



Pictured T-15

MATERIAL SPECIFICATION		
PART	MATERIAL	SPECIFICATION
1 Body	Bronze	ASTM B584 UNS C84400
2 Cap	Bronze	ASTM B584 UNS C84400
3 Screen or Strainer	Stainless Steel	ASTM A240 UNS S30400 (304)
4 Cap gasket	Nitrilic bonded non-asbestos fiber	Commercial grade
5 Closure (blowoff) plug	Bronze	ASTM B584 UNS C83600

DIMENSIONS						
Size	A (IPS)	B (IPS)	Plug NPT	A (Cx C)	B (Cx C)	Plug NPT
1/4"	3.21	2.17	3/8"			
3/8"	3.21	2.17	3/8"			
1/2"	3.21	2.17	3/8"	3.35	2.21	3/8"
3/4"	3.96	2.76	3/8"	4.32	2.68	3/8"
1"	4.53	2.95	1/2"	5.04	3.19	1/2"
1-1/4"	5.34	3.54	1/2"	5.91	3.70	1/2"
1-1/2"	6.22	3.86	1/2"	6.89	4.13	1/2"
2"	7.50	5.43	1/2"	8.62	5.12	1/2"
2-1/2"	9.06	5.91	1/2"	9.06	5.91	1/2"
3"	10.20	6.30	1/2"	10.20	6.30	1/2"

