



# JIG SAW BLADES



FULL RANGE - Available in U Shank and T Shank



# ADVANTAGE

## Sharpness

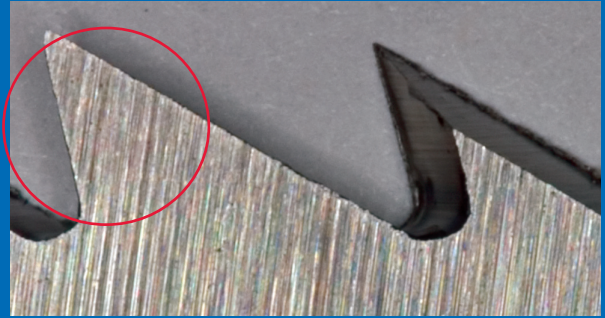
### GREATER PRECISION

Super sharp to cut fast without deflection.

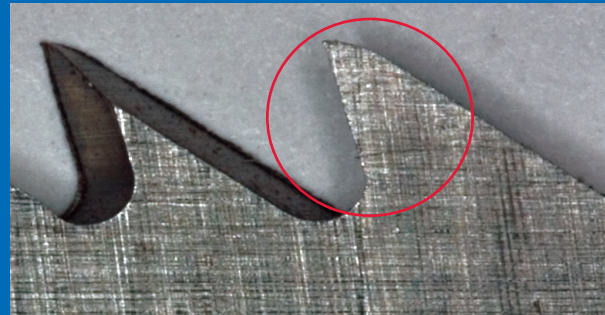
### SMOOTHER FINISH

Ground to precision sharpness for straighter cuts and a smoother finish.

*The images to the right illustrate the industry leading sharpness of a LENOX blade versus the leading competitor's blade. The LENOX blade's ground to precision sharpness provides a straighter cut, without deflection, and a smoother finish.*



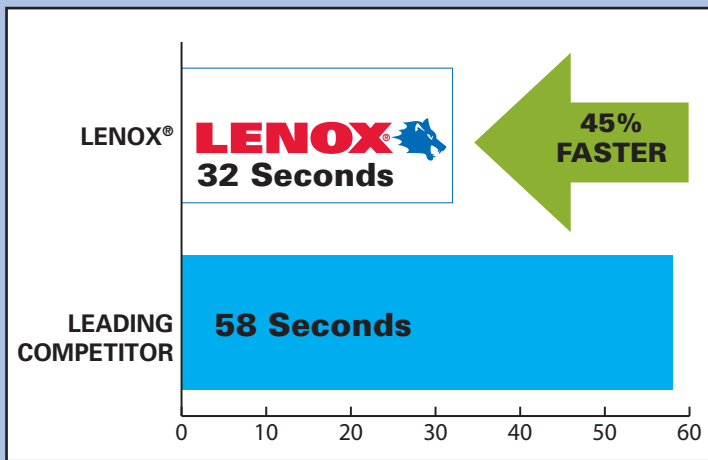
**Precision Ground, Super Sharp LENOX® Blade**



**Leading Competitor Blade**

## Speed

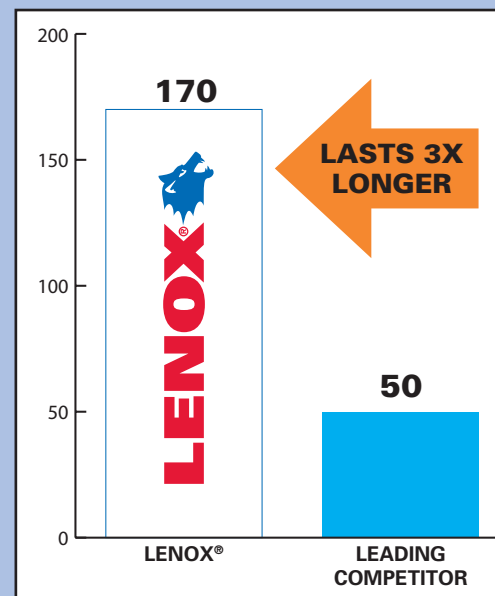
### FASTER CUTS



14TPI Bi-metal blades cutting a 3" crosscut through 0.125" thick 303 stainless steel. Speed is the initial cut time at a constant force.

## Life

### LONGER BLADE LIFE



14TPI Bi-metal blades cutting a 3" crosscut through 0.125" thick 303 stainless steel. Life is the number of cuts that the blade will make at a constant force before the initial cut time doubles.

# Wood Cutting Blades

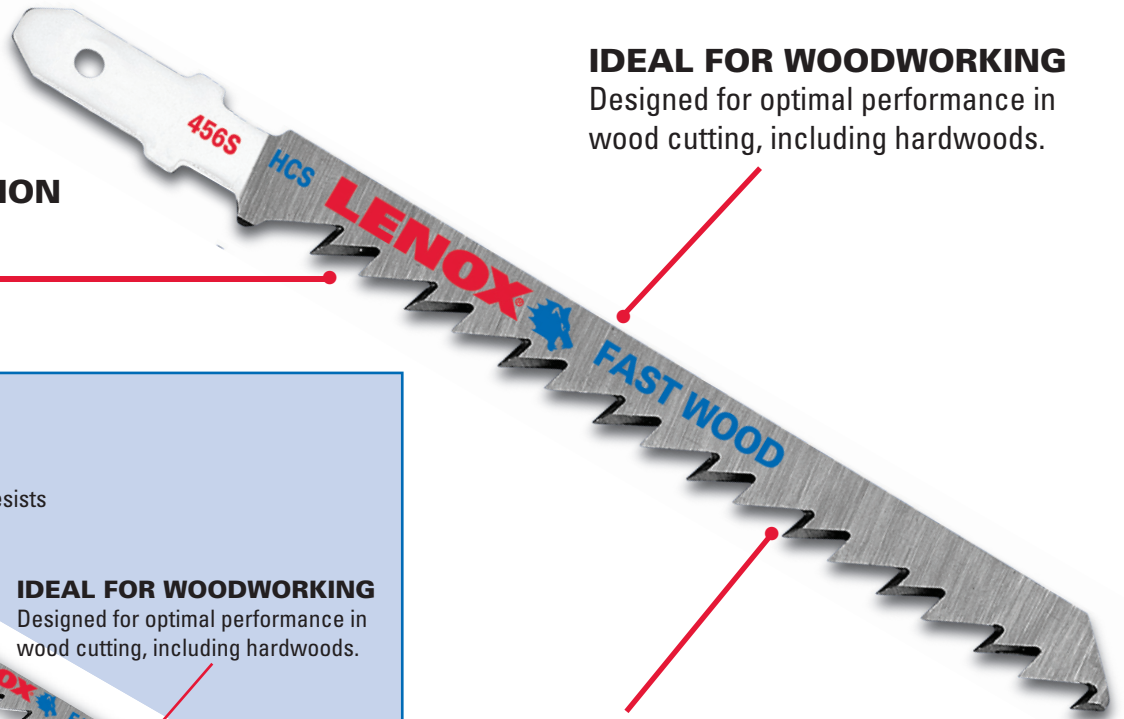
## CARBON

### GREATER PRECISION

Super sharp to cut fast without deflection.

### IDEAL FOR WOODWORKING

Designed for optimal performance in wood cutting, including hardwoods.



## BI-METAL

### SHATTER RESISTANT

Bi-metal technology flexes and resists breaking and extends blade life.

### IDEAL FOR WOODWORKING

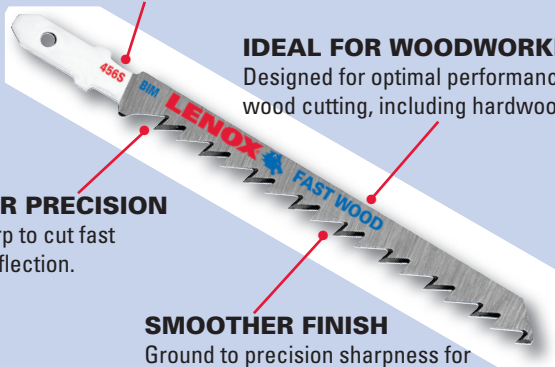
Designed for optimal performance in wood cutting, including hardwoods.

### GREATER PRECISION

Super sharp to cut fast without deflection.

### SMOOTHER FINISH

Ground to precision sharpness for straighter cuts and a smoother finish.



### SMOOTHER FINISH

Ground to precision sharpness for straighter cuts and a smoother finish.

# Metal Cutting Blades

### SHATTER RESISTANT

Bi-metal technology flexes and resists breaking and extends blade life.

### IDEAL FOR METALS

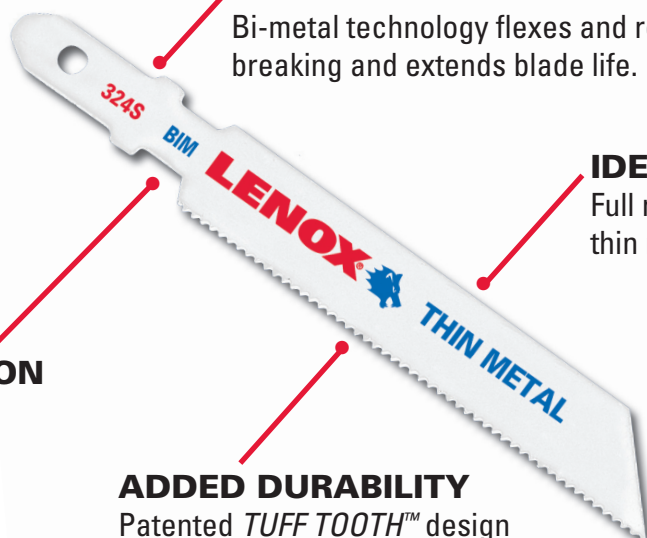
Full range available for thick and thin metal applications.

### GREATER PRECISION

Super sharp to cut fast without deflection.

### ADDED DURABILITY

Patented *TUFF TOOTH™* design extends blade life.



**ALL LENOX metal cutting blades are bi-metal.**

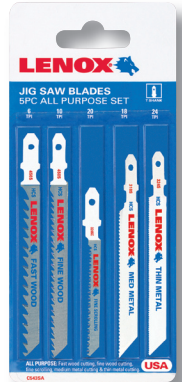


# JIG SAW BLADES LISTING

WOOD CUTTING HIGH CARBON STEEL T SHANK BLADES							
Length	TPI		Application	Process	2 Packs	5 Packs	25 Packs
Product No.	Product No.	Product No.					
4"	6	HCS	Wood	Milled	20750-CTS406S	20298-CFS406S	20293-BCS406S
4"	6	HCS	Wood	Ground	20751-CT456S	20297-CF456S	20292-BC456S
4"	10	HCS	Wood	Ground	20752-CT450S	20296-CF450S	20291-BC450S
4"	10D	HCS	Wood	Ground	20753-CT450SR	20295-CF450SR	20290-BC450SR
3-5/8"	20	HCS	Wood	Ground	20754-CT320SC	20299-CF320SC	20294-BC320SC
WOOD CUTTING HIGH CARBON STEEL U SHANK BLADES							
4"	6	HCS	Wood	Milled	20755-CTS406J	20772-CFS406J	20793-BCS406J
4"	6	HCS	Wood	Ground	20756-CT456J	20773-CF456J	20794-BC456J
4"	10	HCS	Wood	Ground	20757-CT450J	20774-CF450J	20795-BC450J
4"	10D	HCS	Wood	Ground	20758-CT450JR	20798-CF450JR	20796-BC450JR
3-5/8"	20	HCS	Wood	Ground	20759-CT320JC	20799-CF320JC	20797-BC320JC
WOOD CUTTING BI-METAL T SHANK BLADES							
4"	6	BIM	Wood	Milled	20305-BT406S	20849-F406S	20812-B406S
4"	6	BIM	Wood	Ground	20315-BT456S	20850-F456S	20781-B456S
4"	6	BIM	Wood	Ground	20312-BT416SC	20841-F416SC	
4"	10	BIM	Wood	Milled	20306-BT410S	20851-F410S	20813-B410S
4"	10	BIM	Wood	Ground	20313-BT450S	20842-F450S	20814-B450S
4"	10D	BIM	Wood	Ground	20314-BT450SR	20843-F450SR	20782-B450SR
3-5/8"	20	BIM	Wood	Ground	20311-BT320SC	20831-F320SC	20783-B320SC
WOOD CUTTING BI-METAL U SHANK BLADES							
4"	6	BIM	Wood	Milled	20329-BT486J	20652-F486J	20700-B486J
4"	6	BIM	Wood	Ground	20337-BT456J	20653-F456J	20784-B456J
4"	6	BIM	Wood	Ground	20334-BT416JC	20770-F416JC	20790-B416JC
4"	10	BIM	Wood	Milled	20328-BT480J	20654-F480J	
4"	10	BIM	Wood	Ground	20335-BT450J	20648-F450J	20702-B450J
4"	10D	BIM	Wood	Ground	20336-BT450JR	20649-F450JR	20791-B450JR
3-5/8"	20	BIM	Wood	Ground	20333-BT320JC	20640-F320JC	20792-B320JC
METAL CUTTING BI-METAL T SHANK BLADES							
3-5/8"	14	BIM	Metal	Milled	20301-BT314S	20832-F314S	20815-B314S
3-5/8"	18	BIM	Metal	Milled	20302-BT318S	20834-F318S	20816-B318S
5-1/4"	18	BIM	Metal	Milled	20308-BT518S	20854-F518S	
3-5/8"	24	BIM	Metal	Milled	20303-BT324S	20835-F324S	20817-B324S
3-5/8"	32	BIM	Metal	Milled	20803-BT332S	20828-F332S	
3"	Grit		Tile	Grit	20300-GT300S	20830-F300SG	
METAL CUTTING BI-METAL U SHANK BLADES							
3-5/8"	14	BIM	Metal	Milled	20321-BT314J	20641-F314J	20705-B314J
3-5/8"	18	BIM	Metal	Milled	20322-BT318J	20643-F318J	20706-B318J
5-1/4"	18	BIM	Metal	Milled	20330-BT518J	20656-F518J	
3-5/8"	24	BIM	Metal	Milled	20323-BT324J	20644-F324J	20707-B324J
3-5/8"	32	BIM	Metal	Milled	20609-BT332J	20771-F332J	
3"	Grit		Tile	Grit	20320-GT300J	20639-F300JG	
KITS							
20762-C743SA	7 Piece Kit	Pouch	CARBON & BI-METAL T SHANK				
20764-C543SA	5 Piece Kit	Card	CARBON & BI-METAL T SHANK				
20763-C743JA	7 Piece Kit	Pouch	CARBON & BI-METAL U SHANK				
20769-C543JA	5 Piece Kit	Card	CARBON & BI-METAL U SHANK				
20868-U743SA	7 Piece Kit	Pouch	BI-METAL T SHANK				
20606-U743JA	7 Piece Kit	Pouch	BI-METAL U SHANK				

**5 Piece, T Shank Multi-Purpose Kit**  
 Product No. 20764-C543SA  
 456S, 450S, 324S, 320SC, 318S

**5 Piece, U Shank Multi-Purpose Kit**  
 Product No. 20769-C543JA  
 456J, 450J, 324J, 320JC, 318J  
 (not pictured)



**7 Piece, T Shank Kit**  
 Product No. 20762-C743SA  
 C456S, C450SR, C450S,  
 CS406S, B324S, B318S, B314S

**7 Piece, U Shank Kit**  
 Product No. 20763-C743JA  
 C456J, C450JR, C450J,  
 CS406J, B324J, B318J, B314J  
 (not pictured)



**7 Piece, T Shank Bi-metal Kit**  
 Product No. 20868-U743SA  
 456S, 450SR, 450S, 406S,  
 324S, 318S, 314S

**7 Piece, U Shank Bi-metal Kit**  
 Product No. 20606-U743JA  
 456J, 450JR, 450J, 406J,  
 324J, 318J, 314J  
 (not pictured)

