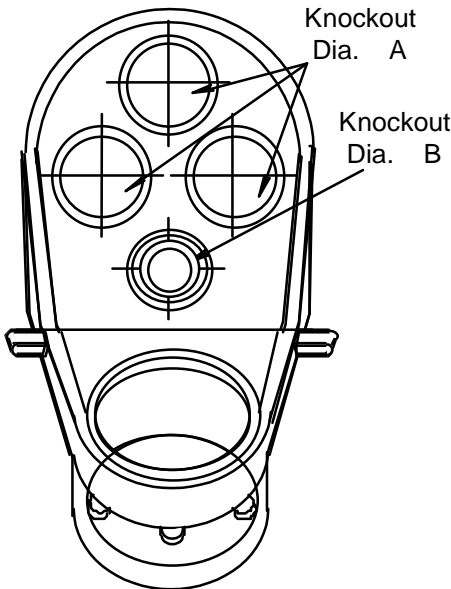


PRODUCT CODE	PART NUMBER	NOMINAL SIZE		L		W		H	
		(in)	(mm)	(in)	(mm)	(in)	(mm)	(in)	(mm)
078302	MH05	1/2	16	3.000	76.2	2.000	50.8	1.750	44.5
078303	MH07	3/4	21	3.000	76.2	2.000	50.8	1.750	44.5
078304**	MH10	1	27	3.700	94.0	3.000	76.2	2.500	63.5
078305	MH12	1 1/4	35	5.100	129.5	3.000	76.2	2.500	63.5
078306	MH15	1 1/2	41	6.700	170.2	4.000	101.6	3.440	87.4
078307	MH20	2	53	6.700	170.2	4.000	101.6	3.440	87.4
078308	MH25	2 1/2	63	12.400	315.0	7.500	190.5	6.060	153.9
078309	MH30	3	78	12.400	315.0	7.500	190.5	6.060	153.9
078310**	MH35	3 1/2	91	12.400	315.0	7.500	190.5	6.060	153.9
078311	MH40	4	103	15.200	386.1	11.250	285.8	10.380	263.7
178135	MH12	1 1/4	35	5.100	129.5	3.000	76.2	2.500	63.5
178136	MH15	1 1/2	41	6.700	170.2	4.000	101.6	3.440	87.4
178137	MH20	2	53	6.700	170.2	4.000	101.6	3.440	87.4

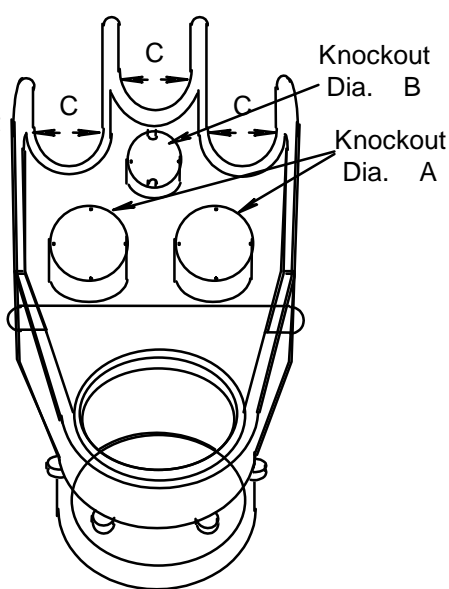
PRODUCT CODE	PART NUMBER	NOMINAL SIZE		SHELL/ BODY CODE	FORK CODE	SOLVENT WELDED BUSHING/ N. COUPLING	
		(in)	(mm)			CODE	SIZE
078302	MH05	1/2	16	077382		097554	3/4X1/2"
078303	MH07	3/4	21				
078304**	MH10	1	27				
078305	MH12	1 1/4	35				
078306	MH15	1 1/2	41	077386		097557	2X 1 1/2"
078307	MH20	2	53				
078308	MH25	2 1/2	63	097252	097973	097558	3X 1 1/2"
078309	MH30	3	78	097252	097973		
078310**	MH35	3 1/2	91	097252	097973	097976	3 1/2X3"
078311	MH40	4	103	097254	097975		
178135	MH12	1 1/4	35				
178136	MH15	1 1/2	41	077386		097557	2X 1 1/2"
178137	MH20	2	53				

** CODES 077283 AND 077289 ARE NOT UL LISTED

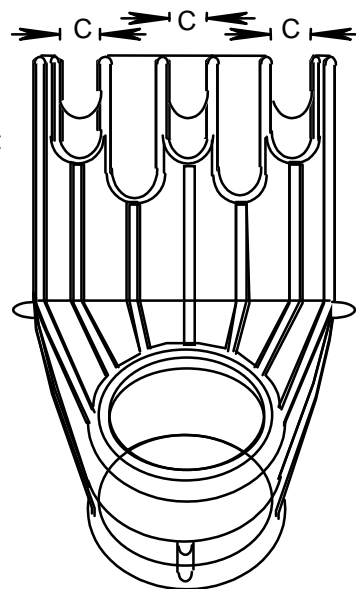
MAST HEADS



FORK FOR EF10 TO EF20



FORK FOR EF25 TO EF50



FORK FOR EF55

PRODUCT CODE	PART NUMBER	NOMINAL SIZE		KNOCKOUTS				C	
				A		B			
		(in)	(mm)	(in)	(mm)	(in)	(mm)	(in)	(mm)
078302	MH05	1/2	16	0.435	11.1	0.330	10.3	-	-
078303	MH07	3/4	21	0.430	11.1	0.330	10.3	-	-
078304**	MH10	1	27	0.560	14.2	1.000	25.4	-	-
078305	MH12	1 1/4	35	0.750	19.1	0.500	12.7	0.750	19.1
078306	MH15	1 1/2	41	0.810	20.6	0.500	12.7	0.875	22.2
078307	MH20	2	53	0.810	20.6	0.500	12.7	0.875	22.2
078308	MH25	2 1/2	63	1.250	31.8	1.250	31.8	1.750	44.5
078309	MH30	3	78	1.250	31.8	1.250	31.8	1.750	44.5
078310**	MH35	3 1/2	91	1.250	31.8	1.250	31.8	1.750	44.5
078311	MH40	4	103	1.530	28.9	1.530	28.9	1.530	38.9
178135	MH12	1 1/4	35	0.750	19.1	0.500	12.7	0.750	19.1
178136	MH15	1 1/2	41	0.810	20.6	0.500	12.7	0.875	22.2
178137	MH20	2	53	0.810	20.6	0.500	12.7	0.875	22.2

Filename: KRALOY-32.doc
Directory: \\Bersrvbdc\bergen\QC MANUAL
Template: C:\Documents and Settings\joelau\Application
Data\Microsoft\Templates\Normal.dot
Title: SOCKET DIMENSION
Subject:
Author: joe lau
Keywords:
Comments:
Creation Date: 1/2/2001 12:50 PM
Change Number: 7
Last Saved On: 4/14/2004 3:49 PM
Last Saved By: Joe Lau
Total Editing Time: 9 Minutes
Last Printed On: 8/8/2005 12:33 PM
As of Last Complete Printing
Number of Pages: 2
Number of Words: 337 (approx.)
Number of Characters: 1,927 (approx.)