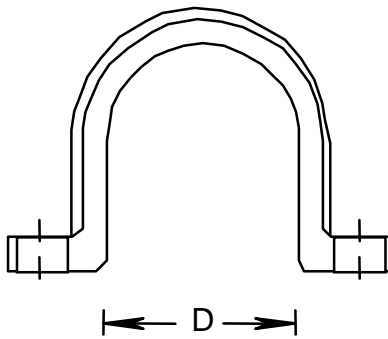
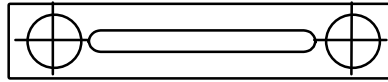


RIGID PVC CONDUIT FITTINGS - KRALOY

PIPE STRAPS

ISSUE DATE:
DATE D'EMISSION: 2004 03 30

SUPERCEDES:
REPLACE: 2004 01 15



COATED STEEL 2 HOLE PIPE STRAPS:

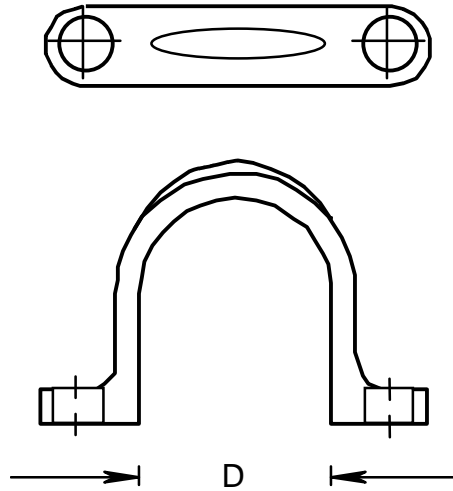
PRODUCT CODE	PART NUMBER	NOMINAL SIZE		D	
		(in)	(mm)	(in)	(mm)
078190	PS20	2	53	2.375	60.3
078191	PS25	2 1/2	63	2.875	73.0
078192	PS30	3	78	3.500	88.9
078193	PS35	3 1/2	91	4.000	101.6
078194	PS40	4	103	4.500	114.3
078195	PS50	5	129	5.565	141.3
078196	PS60	6	155	6.625	168.3
178103	PS25	2 1/2	63	2.875	73.0
178110	PS40	4	103	4.500	114.3
178113	PS15	1 1/2	41	1.900	48.3
178372	PS12	1 1/4	35	1.660	42.2
178373	PS15	1 1/2	41	1.900	48.3
178374	PS20	2	53	2.375	60.3
178375	PS10	1	27	1.315	33.4

RIGID PVC CONDUIT FITTINGS - KRALOY

PIPE STRAPS

ISSUE DATE:
DATE D'EMISSION: 2004 03 30

SUPERCEDES:
REPLACE: 2004 01 15



PLASTIC 2 HOLE PIPE STRAPS:

PRODUCT CODE	PART NUMBER	NOMINAL SIZE		D	
		(in)	(mm)	(in)	(mm)
078375	PS05	1/2	16	0.840	21.3
078376	PS07	3/4	21	1.050	26.7
078377	PS10	1	27	1.315	33.4
078378	PS12	1 1/4	35	1.660	42.2
078379	PS15	1 1/2	41	1.900	48.3
078380	PS20	2	53	2.375	60.3
178047*	PS05	1/2	16	0.840	21.3
178048*	PS07	3/4	21	1.050	26.7
178052*	PS10	1	27	1.315	33.4
178070*	PS12	1 1/4	35	1.660	42.2
178071*	PS15	1 1/2	41	1.900	48.3
178112*	PS12	1 1/4	35	1.660	42.2
178113*	PS15	1 1/2	41	1.900	48.3
178114*	PS20	2	53	2.375	60.3

* Bulk packed for 075

Filename: KRALOY-10.doc
Directory: \\Bersrvbdc\bergen\QC MANUAL
Template: C:\Documents and Settings\joelau\Application
Data\Microsoft\Templates\Normal.dot
Title: SOCKET DIMENSION
Subject:
Author: joe lau
Keywords:
Comments:
Creation Date: 1/2/2001 8:55 AM
Change Number: 14
Last Saved On: 4/15/2004 10:09 AM
Last Saved By: Joe Lau
Total Editing Time: 43 Minutes
Last Printed On: 8/8/2005 12:37 PM
As of Last Complete Printing
Number of Pages: 2
Number of Words: 174 (approx.)
Number of Characters: 998 (approx.)