

Contractors' CHOICE™

Push-In Connectors - For Conventional Dry Splices

Product Specifications

Yellow, Orange, Ivory, Blue, Purple
and Black Push-In Connectors

Wire Range & Rating:

- Rated 600V Max. for Building wiring and 1000V Max. in lighting fixtures/ luminaries and signs
- Housing: Polycarbonate (PC), flame-retardant to UL94-V2 or UL94-V0 working temperature: T110°CIEC, 105°C/221°F (UL)
- UL: 600V
- 22-12AWG, Solid Cu
- 22-12AWG, Stranded Cu

- Color coded identification of ports
- Integrally designed test ports
- No need to twist wires or tape connections
- Simply strip wires, insert into connector and save time and money

Not suitable for wet applications.

See reverse side for a listing of wire combinations.



Yellow Push-In Connector

2 PORT

Catalog #	Selling Unit
67205	Box of 100



Orange Push-In Connector

3 PORT

Catalog #	Selling Unit
67215	Box of 100



Ivory Push-In Connector

4 PORT

Catalog #	Selling Unit
67225	Box of 75



Blue Push-In Connector

5 PORT

Catalog #	Selling Unit
67235	Box of 50



Purple Push-In Connector

6 PORT

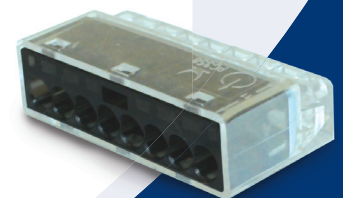
Catalog #	Selling Unit
67245	Box of 50



Black Push-In Connector

8 PORT

Catalog #	Selling Unit
67255	Box of 40



Contractors' Choice™ Push-In Connectors

Push-In Connectors - For Conventional Dry Splices

Yellow, Orange, Ivory, Blue, Purple, and Black Push-In Connectors - 600V Wire Combinations

22 AWG Solid Wire	Stranded Wire, 7 Strands or Less
20 AWG Solid Wire	Stranded Wire, 10 Strands or Less
18 AWG Solid Wire	Stranded Wire, 16 Strands or Less
16 AWG Solid Wire	Stranded Wire, 26 Strands or Less
14 AWG Solid Wire	Stranded Wire, 19 Strands or Less
12 AWG Solid Wire	Stranded Wire, 19 Strands or Less

Please contact factory for a complete list of wire combinations.