

Applications

Typical industrial, commercial and residential applications for Kraloy electrical systems include:

- Residential single & multi family dwellings
- Food processing plants
- Fish processing plants
- Agricultural
- Bridges and tunnels
- Airports
- Car washes
- Marinas
- Sewage treatment plants
- Water treatment plants
- Pulp and paper
- Street and highway lighting
- Utilities
- Communications
- Cable



Advantages

Labor Savings

Compared to yesterday's metal products, PVC reduces labor on typical installations by as much as two-thirds, because it is easy to work with. PVC does not require the labor intensive tools usually associated with steel products, such as vises, threading equipment and reamers.

Easy Joining

Solvent cementing is all that is required, eliminating the need for power-threading machines, pipe vises and cutting equipment. A hacksaw or carpenter's saw is the only equipment required.

Strength

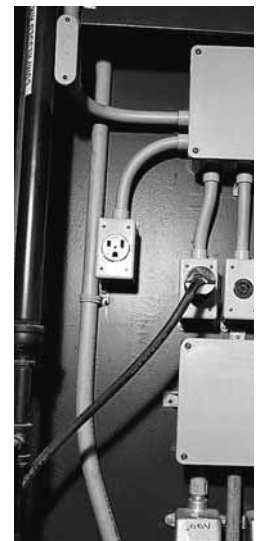
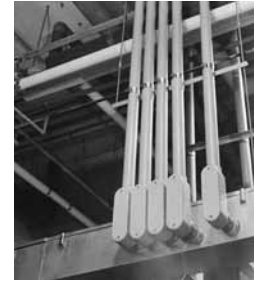
Kraloy PVC fittings offer both high impact and high tensile strength.

Corrosion Resistant

PVC is resistant to external corrosion and pitting and will not rust. This ensures a lower maintenance cost and a longer performance life.

Nonconductive

PVC eliminates the most dangerous second point of contact in phase to ground faults. The use of a separate grounding conductor gives a complete and positive ground for the entire system.



Applicable Standards

Underwriters Laboratories

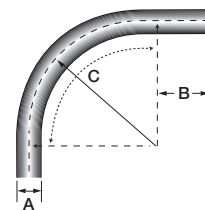
UL50	Enclosures for Electrical Equipment
UL514B	Fittings for Cable & Conduit
UL514C	Nonmetallic Outlet Boxes, Flush-Device Boxes & Covers
UL651	Schedule 40 & 80 Rigid PVC Conduit

Canadian Standards Association

CSA C22.2 No. 18	Outlet Boxes, Fittings & Associated Hardware
CSA C22.2 No. 40	Cutout, Junction & Pull Boxes
CSA C22.2 No. 42	General Use Receptacles, Attachment Plugs & Similar Wiring Devices
CSA C22.2 No. 85	Rigid PVC Boxes & Fittings
CSA C22.2 No. 94	Special Purpose Enclosures
CSA C22.2 No. 211.0	General Requirements & Methods of Testing Nonmetallic Conduit
CSA C22.2 No. 211.1	Rigid Types EB1 & DB2/ES2 PVC Conduit
CSA C22.2 No. 211.2	Rigid PVC (Unplasticized) Conduit
CSA C22.2 No. 227.1	Electrical Nonmetallic Tubing
CSA C22.2 No. 227.2	Flexible Liquid-Tight Nonmetallic Conduit

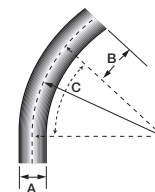
National Electrical Manufacturers Association

NEMA TC3	PVC Fittings for use with Rigid PVC Conduit & Tubing
NEMA TC2	Electrical Plastic Tubing (EPT) & Conduit (EPC-40 & EPC-80)
NEMA TC9	Fittings for ABS & PVC Plastic Utilities Duct for Underground Installation
NEMA 250	Enclosures for electrical Equipment (1000 Volts Maximum)



Schedule 40 Standard Radius 90° Elbows

Size (in.)	Part Number	Product Code	A (in.)	B (in.)	C (in.)
1/2	40STD0590	078540	0.840	1.500	4.000
3/4	40STD0790	078541	1.050	1.500	4.500
1	40STD1090	078542	1.315	1.875	5.750
1-1/4	40STD1290	078543	1.660	2.000	7.250
1-1/2	40STD1590	078544	1.900	2.000	8.250
2	40STD2090	078545	2.375	2.000	9.500
2-1/2	40STD2590	078546	2.875	3.000	10.500
3	40STD3090	078547	3.500	3.125	13.000
3-1/2	40STD3590	078548	4.000	3.250	15.000
4	40STD4090	078549	4.500	3.375	16.000
5	40STD5090	078550	5.563	3.625	24.000
6	40STD6090	078551	6.625	3.750	30.000



Schedule 40 Standard Radius 45° Elbows

Size (in.)	Part Number	Product Code	A (in.)	B (in.)	C (in.)
1/2	40STD0545	078552	0.840	1.500	4.000
3/4	40STD0745	078553	1.050	1.500	4.500
1	40STD1045	078554	1.315	1.875	5.750
1-1/4	40STD1245	078555	1.660	2.000	7.250
1-1/2	40STD1545	078556	1.900	2.000	8.250
2	40STD2045	078557	2.375	2.000	9.500
2-1/2	40STD2545	078558	2.875	3.000	10.500
3	40STD3045	078559	3.500	3.125	13.000
3-1/2	40STD3545	078560	4.000	3.250	15.000
4	40STD4045	078561	4.500	3.375	16.000
5	40STD5045	078562	5.563	3.625	24.000
6	40STD6045	078563	6.625	3.750	30.000