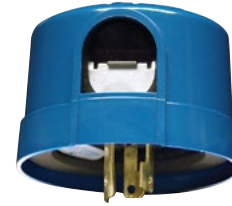




LC4521



LC2100

Twist Lock Thermal Photocontrols

LC4500 Series

These photocontrols install on light fixtures with ANSI C136.10 NEMA receptacle commonly found on street light fixtures. Twist Lock design facilitates fast installation and replacement of photocontrol.

Features

- Mechanical bi-metal switch with Cadmium Sulfide photocell
- Integral high impact thermoplastic housing
- Twist lock plug for quick installation and changeover
- Delay feature prevents unwanted OFF switching
- Complies with ANSI C136.10 standard
- Tested to 3,650 ON/OFF cycles

Model #	Voltage	Tungsten	Ballast	Protection
LC4521C	120 V	1800 W	1000 VA	None
LC4523	208-277 V	3100-4150 W	1700-2300 VA	
LC4527*	347 V	5205 W	2880 VA	
LC4535	480 V	7200 W	4000 VA	
LC4536C	120-277 V	1800-4155 W	1000-2300 VA	
	120 V	1800 W	1000 VA	2400 V Spark Gap Surge Arrester
	208-277 V	3100-4150 W	1700-2300 VA	
	480 V	7200 W	4000 VA	
	480 V	7200 W	4000 VA	

Note: *LC4527 is only CSA certified.



Ratings	
Operating Voltage	120/208-277/347/480 VAC
Inductive Ballast	8.3 A
Incandescent	15 A
Activation	5 fc ON, 15 fc OFF
Operating Temperature	-40° F to 158° F (-40° C to 70° C)
Dimensions H x Dia	2 3/4" x 3" (69.9 mm x 76.2 mm)
Warranty	2-year limited

Low-Cost Multivoltage Twist Lock Thermal Photocontrols

LC2100

This model combines a silicon diode photosensing element with thermal switch to provide a multivoltage, cost-effective photocontrol.

Features

- Mechanical bimetal switch with Silicon Diode photocell
- Thermoplastic housing with window
- Multivoltage covers 120 to 277 VAC applications
- Complies with ANSI C136.10

Model #	Voltage	Tungsten	Ballast
LC2100	120-277 V	1800 W	1000 VA



Ratings	
Operating Voltage	110-277 VAC, 50/60 Hz
Inductive Ballast	1800 VA
Incandescent	1000 W
Activation	1.5 fc ON, 6 fc OFF
Operating Temperature	-40° F to 158° F (-40° C to 70° C)
Dimensions H x Dia	2 7/8" x 3" (56.4 mm x 76.2 mm)
Warranty	1-year limited

For all Models Above

Accessories

Shorting Plug, Rating: 15 A, 480 VAC Max	K4500
ANSI C136.10 Locking type receptacle, (9" lead)	K121
ANSI C136.10 Locking type receptacle, (30" lead)	K121-30
Sealed locking type receptacle with pole bracket	K122



K4500



K121/K121-30



K122