
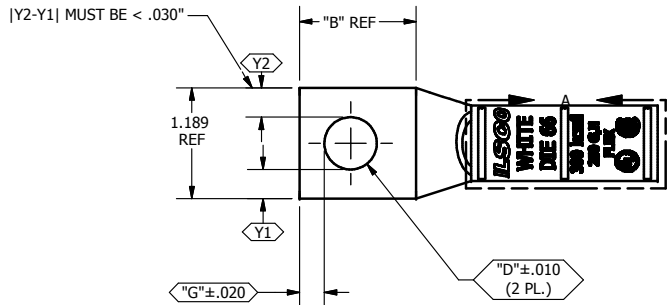


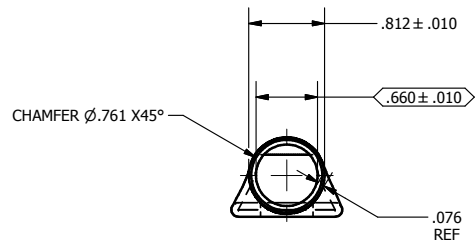
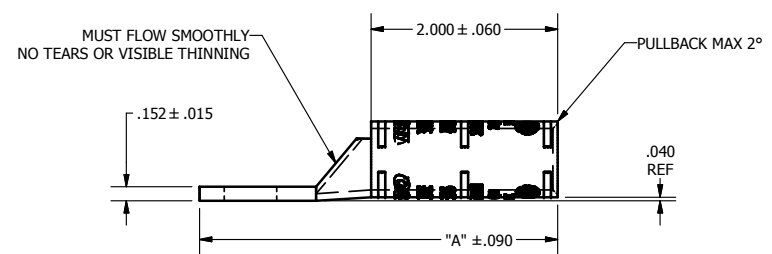
SCREW:N/A	MATERIAL: L109925, CDA-122 CU	CELL: CSP	TOLERANCES-UNLESS OTHERWISE SPECIFIED 2 PL. DEC. ±.015 TRUE CL ±.015 3 PL. DEC. ±.015 ANGLES ±1	DWG. NO. <b>Y1213-S</b>	
CAT. NO.: SEE CHART	PLATING: EL-TIN	STUFFER SHT.: FORM 157		SHEET 1 OF 1	
MASS: SEE CHART	MARKING: SEE CHART		DRAWN BY: DW	SCALE: .75:1	
SURFACE AREA:			DATE: 7/5/2007	SIZE: B	

REV.	DESCRIPTION
F	



DETAIL A, SCALE 1 : 1  
TOP AND BOTTOM INK MARKINGS ARE IDENTICAL  
INK COLOR: WHITE PLT9  
PER SPEC #: F921

Cat #: SEE CHART FOR COMPLETE Cat #



Part Number	Catalog Number	"A"	"B"	"C"	"D"	"G"	SAWCUT LENGTH	TANG MARKING
Y1213C36T	CLWS-300-14	3.462	0.875	0.000	0.281	0.180	3.712	
Y1213C47T	CLWS-300-516	3.462	0.875	0.000	0.343	0.180	3.712	ILSCO, C-300-516, 300 kcmil, 250 GH FLEX, DIE 66, UL, CSA
Y1213C46T	CLWS-300-38	3.462	0.875	0.000	0.406	0.211	3.712	ILSCO, CLWS-300-38, 300 kcmil, 250 GH FLEX, DIE 66, UL, CSA
Y1213C42T	CLWS-300-12	3.837	1.250	0.000	0.562	0.265	4.087	ILSCO, CLWS-300-12, DIE 66, 300 kcmil, 250 GH FLEX, UL, CSA
Y1213C43T	CLWS-300-58	4.024	1.437	0.000	0.656	0.343	4.274	ILSCO, CLWS-300-38, 300 kcmil, 250 GH FLEX, DIE 66, UL, CSA
Y1213C44T	CLWS-300-34	4.274	1.687	0.000	0.781	0.359	4.524	
Y1213C45T	CLWS-300-78	4.524	1.937	0.000	0.906	0.437	4.774	