
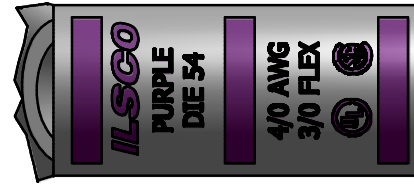
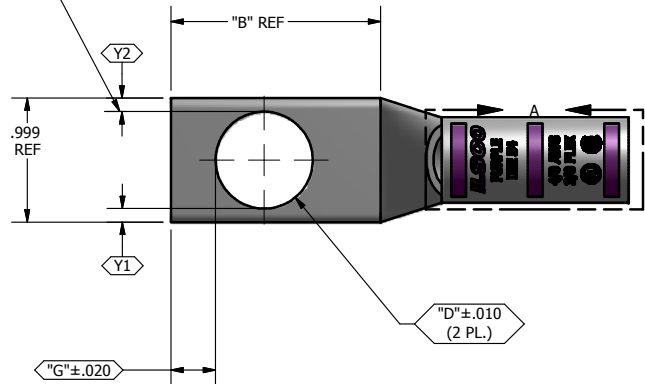


SCREW: N/A	MATERIAL: L118625, CDA-122 CU	CELL: CSP	TOLERANCES-UNLESS OTHERWISE SPECIFIED 2 PL. DEC. ±.015 TRUE CL ±.015 3 PL. DEC. ±.015 ANGLES ±1	DWG. NO. Y1013-S	
CAT. NO.: SEE CHART	PLATING: EL-TIN	STUFFER SHT.: FORM 157	SCALE: 1:1	SHEET 1 OF 1	
MASS: SEE CHART	MARKING: SEE CHART		DATE: 8/6/2007	SIZE: B	
SURFACE AREA:					

|Y2-Y1| MUST BE < .030"

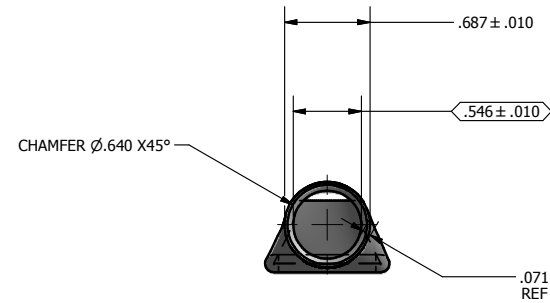
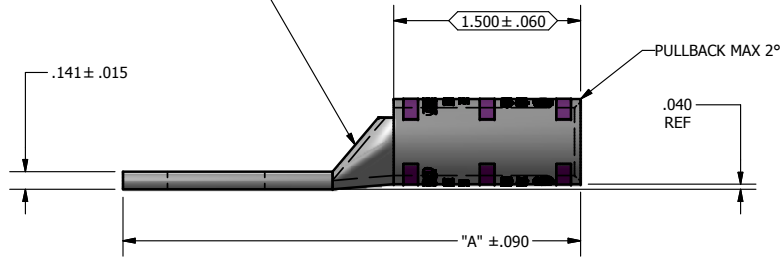


DETAIL A, SCALE 2 : 1
TOP AND BOTTOM INK MARKINGS ARE IDENTICAL
INK COLOR: PURPLE
PER SPEC #: F921

Cat #: SEE CHART FOR COMPLETE Cat #

REV.	DESCRIPTION
D	

MUST FLOW SMOOTHLY
NO TEARS OR VISIBLE THINNING



Part Number	Catalog Number	"A"	"B"	"C"	"D"	"G"	SAWCUT LENGTH	TANG MARKING
Y1013C36T	CLWS-4/0-14	2.866	0.875	0.000	0.281	0.180	2.928	ILSCO, C-4/0-14, DIE 54, 4/0 AWG, 3/0 FLEX, UL, CSA
Y1013C47T	CLWS-4/0-516	2.866	0.875	0.000	0.343	0.180	2.928	
Y1013C46T	CLWS-4/0-38	2.866	0.875	0.000	0.406	0.211	2.928	ILSCO, C-4/0-38, DIE 54, 4/0 AWG, 3/0 FLEX, UL, CSA
Y1013C42T	CLWS-4/0-12	3.241	1.250	0.000	0.562	0.265	3.303	ILSCO, 4/0 AWG, 3/0 FLEX, C-4/0-12, DIE 54, UL, CSA
Y1013C43T	CLWS-4/0-58	3.428	1.437	0.000	0.656	0.343	3.490	
Y1013C44T	CLWS-4/0-34	3.678	1.687	0.000	0.781	0.359	3.740	