
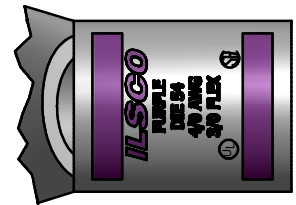
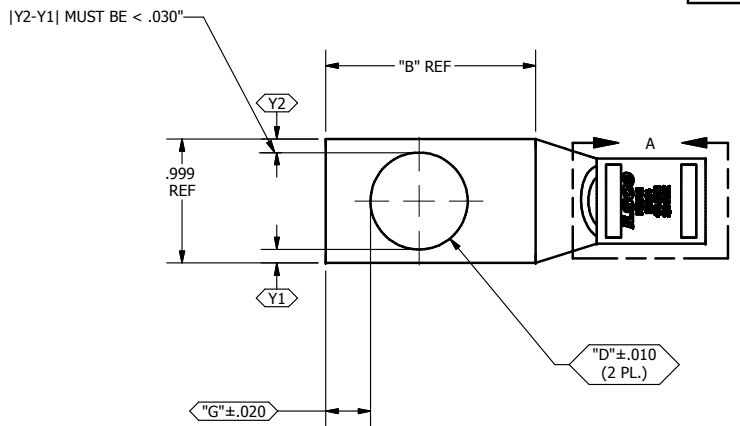


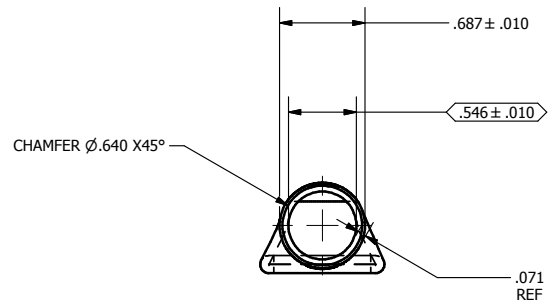
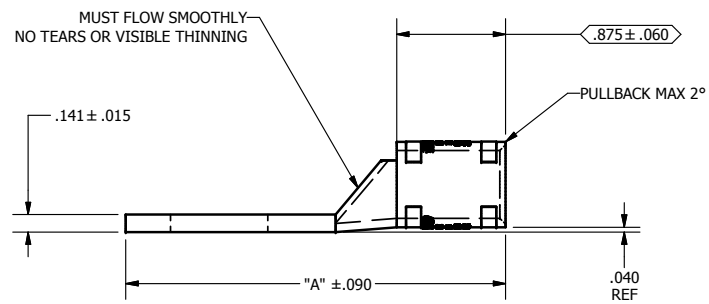
SCREW:N/A	MATERIAL: L118625, CDA-122 CU	CELL: CSP	TOLERANCES-UNLESS OTHERWISE SPECIFIED 2 PL. DEC. ±.015 3 PL. DEC. ±.015	TRUE C.L. ±.015 ANGLES ±1	DWG. NO. <b>Y1011-S</b>	
CAT. NO.: SEE CHART	PLATING: EL-TIN	STUFFER SHT.: FORM 157	DRAWN BY: DW	SCALE: 1:1	SHEET 1 OF 1	
MASS: SEE CHART	MARKING: SEE CHART		DATE: 8/6/2007	SIZE: B		
SURFACE AREA:						

REV.	DESCRIPTION
F	

**Cat #: SEE CHART FOR COMPLETE Cat #**



DETAIL A, SCALE 2 : 1  
TOP AND BOTTOM INK MARKINGS ARE IDENTICAL  
INK COLOR: PURPLE  
PER SPEC #: F921



Part Number	Catalog Number	"A"	"B"	"D"	"G"	TANG MARKING
Y1011C36T	CSWS-4/0-14	2.241	0.875	0.281	0.180	ILSCO, C-4/0-14, DIE 54, 4/0 AWG, 3/0 FLEX, UL, CSA
Y1011C47T	CSWS-4/0-516	2.241	0.875	0.343	0.180	ILSCO, CSWS-4/0-516, 4/0 AWG, 3/0 FLEX, DIE 54, UL, CSA
Y1011C46T	CSWS-4/0-38	2.241	0.875	0.406	0.211	ILSCO, CSWS-4/0-38, DIE 54, 4/0 AWG, 3/0 FLEX, UL, CSA
Y1011C42T	CSWS-4/0-12	2.616	1.250	0.562	0.265	ILSCO, 4/0 AWG, 3/0 FLEX, CSWS-4/0-12, DIE 54, UL, CSA
Y1011C43T	CSWS-4/0-58	2.803	1.437	0.656	0.343	ILSCO, CSWS-4/0-58, 4/0 AWG, 3/0 FLEX, DIE 54, UL, CSA
Y1011C44T	CSWS-4/0-34	3.053	1.687	0.781	0.359	
Y1011C86T	CSWS-4/0-916	2.616	1.250	0.593	0.297	UL, ILSCO, CSA, CSWS-4/0-916, 9/16, 4/0 AWG, 3/0 FLEX, DIE 54