
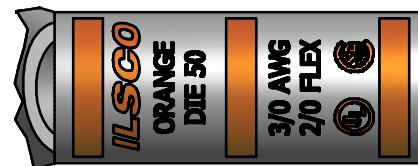
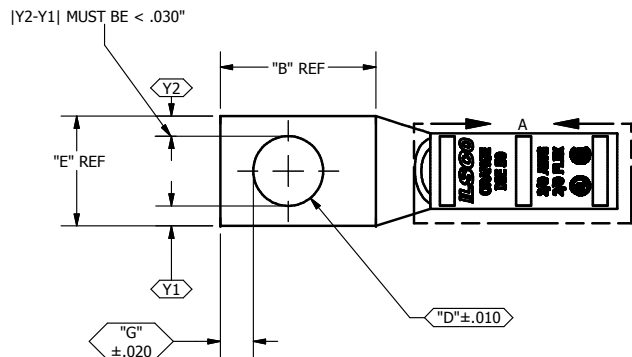


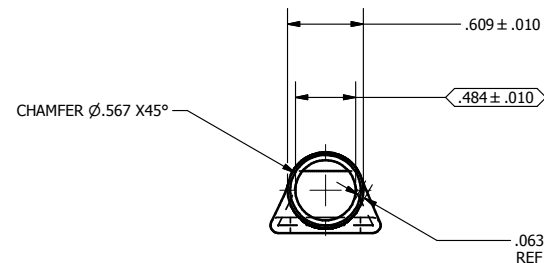
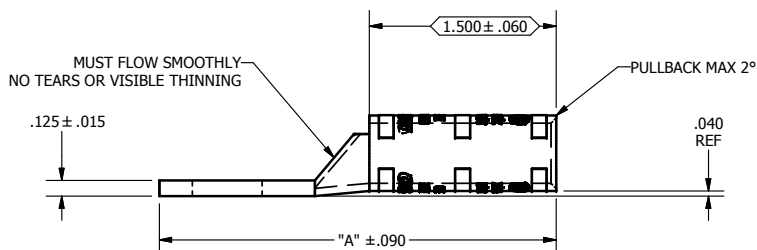
SCREW:N/A	MATERIAL: L118425, CDA-122 CU	CELL: CSP	TOLERANCES-UNLESS OTHERWISE SPECIFIED 2 PL. DEC. ±.015 TRUE CL ±.015 3 PL. DEC. ±.015 ANGLES ±1	DWG. NO. Y0913-S	
CAT. NO.: SEE CHART	PLATING: EL-TIN	STUFFER SHT.: FORM 157	SCALE: 1:1	SHEET 1 OF 1	
MASS: SEE CHART	MARKING: SEE CHART		DATE: 8/6/2007	SIZE: B	
SURFACE AREA:					

REV.	DESCRIPTION
C	



DETAIL A, SCALE 2 : 1  
TOP AND BOTTOM INK MARKINGS ARE IDENTICAL  
INK COLOR: ORANGE  
PER SPEC #: F921

Cat #: SEE CHART FOR COMPLETE Cat #



Part Number	Catalog Number	"A"	"B"	"C"	"D"	"E"	"G"	SAWCUT LENGTH	TANG MARKING
Y0913C33T	CLWS-3/0-10	2.501	0.562	0.000	0.219	.885	0.148	2.563	
Y0913C36T	CLWS-3/0-14	2.814	0.875	0.000	0.281	.885	0.180	2.876	ILSCO, DIE 50, CLWS-3/0-14, 3/0 AWG, 2/0 FLEX, UL, CSA
Y0913C47T	CLWS-3/0-516	2.814	0.875	0.000	0.343	.885	0.180	2.876	
Y0913C46T	CLWS-3/0-38	2.814	0.875	0.000	0.406	.885	0.211	2.876	ILSCO, C-3/0-38, DIE 50, 3/0 AWG, 2/0 FLEX, UL, CSA
Y0913C42T	CLWS-3/0-12	3.189	1.250	0.000	0.562	.885	0.265	3.251	ILSCO, CLWS-3/0-12, 3/0 AWG, 2/0 FLEX, DIE 50, UL, CSA
Y0913C43T	CLWS-3/0-58	3.376	1.437	0.000	0.656	.885	0.343	3.438	
Y0913C44T	CLWS-3/0-34	3.626	1.687	0.000	0.781	.969	0.359	3.688	