
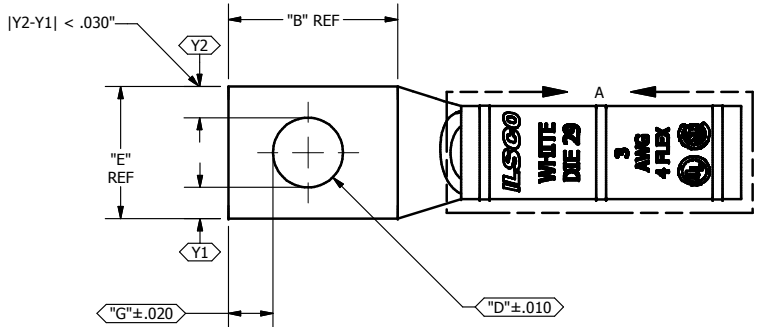


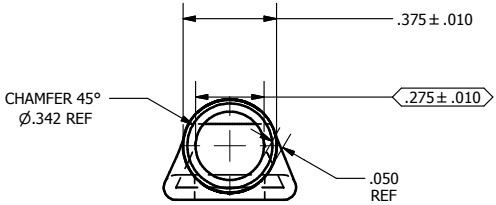
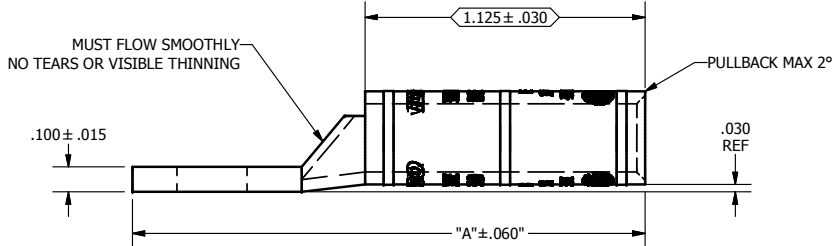
|                     |                               |                        |   |                     |   |
|---------------------|-------------------------------|------------------------|---|---------------------|---|
| SCREW: N/A          | MATERIAL: L131525, CDA-122 CU | CELL: CSP              | TOLERANCES-UNLESS OTHERWISE SPECIFIED<br>2 PL. DEC. ±.015 TRUE C.L. ±.015<br>3 PL. DEC. ±.015 ANGLES ±1 | DWG. NO.<br>Y0413-S |  |
| CAT. NO.: SEE CHART | PLATING: EL-TIN               | STUFFER SHT.: FORM 157 | SCALE: 2:1  | SHEET 1 OF 1        |   |
| MASS: N/A           | MARKING: SEE CHART            |                        | DATE: 7/19/2007   | SIZE: B             |   |
| SURFACE AREA:       |                               |                        |   |                     |   |

| REV. | DESCRIPTION |
|------|-------------|
| E    |             |



DETAIL A, SCALE 2 : 1  
TOP & BOTTOM INK MARKING  
INK COLOR: WHITE  
PER SPEC #: F921

Cat #: SEE CHART FOR COMPLETE Cat #



| PART NUMBER | CATALOG NUMBER | "A"   | "B"   | "C"   | "D"   | "E"   | "G"   | SAWCUT LENGTH | TANG MARKING                                     |
|-------------|----------------|-------|-------|-------|-------|-------|-------|---------------|--|
| Y0413C32T   | CLWS-3-8       | 1.942 | 0.562 | 0.000 | 0.195 | 0.532 | 0.129 | 2.004         |  |
| Y0413C33T   | CLWS-3-10      | 1.942 | 0.562 | 0.000 | 0.219 | 0.532 | 0.148 | 2.004         |  |
| Y0413C36T   | CLWS-3-14      | 2.060 | 0.680 | 0.000 | 0.281 | 0.532 | 0.180 | 2.122         | ILSCO, C-3-14, 3 AWG, 4 FLEX, DIE 29, UL, CSA    |
| Y0413C47T   | CLWS-3-516     | 2.255 | 0.875 | 0.000 | 0.343 | 0.532 | 0.180 | 2.317         | ILSCO, C-3-516, 3 AWG, 4 FLEX, DIE 29, UL, CSA   |
| Y0413C46T   | CLWS-3-38      | 2.255 | 0.875 | 0.000 | 0.406 | .592  | 0.211 | 2.317         | ILSCO, CLWS-3-38, 3 AWG, 4 FLEX, UL, CSA         |
| Y0413C42T   | CLWS-3-12      | 2.630 | 1.250 | 0.000 | 0.562 | .749  | 0.265 | 2.692         | ILSCO, CLWS-3-12, 3 AWG, 4 FLEX, DIE 29, UL, CSA |