



**50/150
Series**



**68
Series**



**64
Series**



**63/225
Series**



**63-4
Series**

Hy-Gear® 9/16" Worm Drive Clamps

Full-size industry-standard worm drive 9/16" band clamps have a wide range of applications, from simple home and auto repair to heavy industrial uses. The bands have clean punched rectangular perforations that hold strong and connect easily.

Ideal® 50 Series / Tridon® 150 Series

Stainless Steel and Plated Parts.
Screw: 5/16" hex-head, plated carbon steel.
Band: 9/16" band width, 201/301 stainless steel.
Housing: 201/301 stainless steel.

Ideal® 68 Series

All Stainless Steel Parts, specially suited for industrial applications.
Screw: 5/16" hex slotted. 410 stainless steel.
Band: 9/16" band width. 201/301 stainless steel.
Housing: 201/301 stainless steel.

Ideal® 64 Series

All Stainless Steel Parts, specially suited for industrial applications.
Screw: 3/8" hex slotted. 410 stainless steel.
Band: 9/16" band width. 201/301 stainless steel.
Housing: 201/301 stainless steel.

Ideal® 63 Series/Tridon® 225 Series

All Hi-Nickel Alloy Stainless Steel Parts for better corrosion resistance.
Screw: 5/16" hex slotted. 305 stainless steel.
Band: 9/16" band width. 201/301 stainless steel.
Housing: 201/301 stainless steel, with UPC shield.

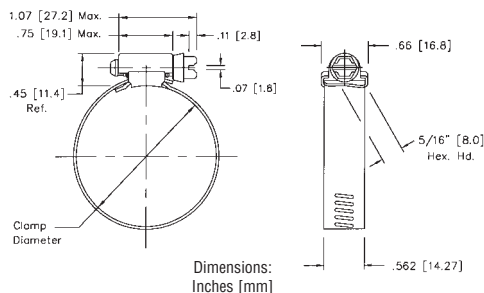


Ideal® 63-4 Series

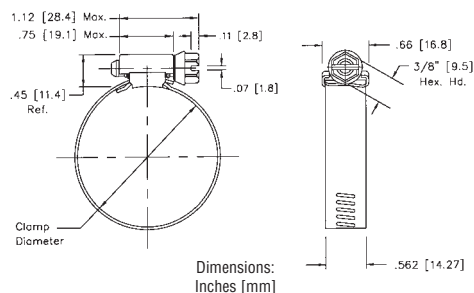
All 300 Series Marine Stainless Steel Parts for better corrosion resistance.
Screw: 5/16" hex slotted. 305 stainless steel.
Band: 9/16" band width. 301 stainless steel.
Housing: 300 stainless steel, with UPC shield.



5/16" Hex Head



3/8" Hex Head



FULL SIZE CLAMPS											CLAMPING RANGE					
SAE Sizes	Ideal Part No.	Tridon Part No.	Ideal Part No.	Tridon Part No.	Ideal Part No.	Tridon Part No.	Ideal Part No.	Tridon Part No.	Ideal Part No.	Tridon Part No.	Min.Dia. (in.)	Max.Dia. (in.)	Min.Dia. (mm)	Max.Dia. (mm)	Hose I.D. Min. (in.)	Hose I.D. Max. (in.)
	50	150	68	N/A	64	N/A	63	225	63-4	N/A						
6	5006	-	6806	-	6406	-	6306	-	-	-	3/8	7/8	10	22	5/16	3/8
8	5008	-	6808	-	6408	-	6308	-	-	-	7/16	1	11	25	5/16	1/2
10	5010	150-010	6810	-	6410	-	6310	225-010	63004-0010	-	1/2	1 1/16	13	27	3/8	5/8
12	5012	150-012	6812	-	6412	-	6312	225-012	63004-0012	-	1/2	1 1/4	13	32	3/8	3/4
16	5016	150-016	6816	-	6416	-	6316	225-016	63004-0016	-	11/16	1 1/2	18	38	3/4	7/8
20	5020	150-020	6820	-	6420	-	6320	225-020	63004-0020	-	3/4	1 3/4	19	44	3/4	1 1/8
24	5024	150-024	6824	-	6424	-	6324	225-024	63004-0024	-	1	2	25	51	7/8	1 3/8
28	5028	150-028	6828	-	6428	-	6328	225-028	63004-0028	-	1 1/4	2 1/4	32	57	1 1/4	1 5/8
32	5032	150-032	6832	-	6432	-	6332	225-032	63004-0032	-	1 1/2	2 1/2	38	63	1 1/2	1 7/8
36	5036	150-036	6836	-	6436	-	6336	225-036	63004-0036	-	1 3/4	2 3/4	44	70	1 3/4	2
40	5040	150-040	6840	-	6440	-	6340	225-040	63004-0040	-	2	3	51	76	2	2 1/4
44	5044	150-044	6844	-	6444	-	6344	225-044	63004-0044	-	2 1/4	3 1/4	57	82	2 1/4	2 1/2
48	5048	150-048	6848	-	6448	-	6348	225-048	63004-0048	-	2 1/2	3 1/2	64	89	2 1/4	2 3/4
52	5052	150-052	6852	-	6452	-	6352	225-052	63004-0052	-	2 3/4	3 3/4	70	95	2 3/4	3
56	5056	150-056	6856	-	6456	-	6356	225-056	63004-0056	-	3	4	76	101	3	3 1/2
60	5060	150-060	6860	-	6460	-	6360	225-060	63004-0060	-	3 1/4	4 1/4	83	108	3 1/4	3 3/4
64	5064	150-064	6864	-	6464	-	6364	225-064	63004-0064	-	2 1/2	4 1/2	64	114	2 1/2	4
72	5072	150-072	6872	-	6472	-	6372	225-072	63004-0072	-	3	5	76	127	3	4 1/2
80	5080	150-080	6880	-	6480	-	6380	225-080	63004-0080	-	3 1/2	5 1/2	89	140	3 1/2	5
88	5088	150-088	6888	-	6488	-	6388	225-088	63004-0088	-	4	6	102	152	4	5 1/2
96	5096	150-096	6896	-	6496	-	6396	225-096	63004-0096	-	4 1/2	6 1/2	114	165	4 1/2	6
104	50104	150-104	68104	-	64104	-	63104	225-104	63004-0104	-	5	7	127	178	5	6 1/2
116	-	-	68116	-	-	-	63116	225-116	63004-0116	-	5 3/4	7 3/4	146	197	5 1/2	7
128	-	-	-	-	-	-	63128	225-128	63004-0128	-	2 1/2	8 1/2	64	216	3	7 1/2
140	-	-	-	-	-	-	63140	-	63004-0140	-	7 1/4	9 1/4	184	235	7 1/2	8 1/2
152	-	-	-	-	-	-	63152	225-152	63004-0152	-	8	10	51	254	2 1/2	9 1/2
164	-	-	-	-	-	-	63164	-	63004-0164	-	2	10 3/4	51	273	2 1/2	10
176	-	-	-	-	-	-	63176	-	63004-0176	-	9 1/2	11 1/2	241	292	10	11
188	-	-	-	-	-	-	63188	225-188	63004-0188	-	10 1/4	12 1/4	51	311	2 1/2	11 1/2
208	-	-	-	-	-	-	63208	-	63004-0208	-	11 1/2	13 1/2	292	343	12	13
224	-	-	-	-	-	-	63224	-	63004-0224	-	12 1/2	14 1/2	318	368	13	14
236	-	-	-	-	-	-	63236	-	63004-0236	-	13 1/4	15 1/4	337	387	13 1/2	14 1/2
248	-	-	-	-	-	-	63248	-	63004-0248	-	2	16	51	406	2 1/2	15 1/2

Additional sizes available upon request.

N/A - Not Available