

POLE TOP BRACKETS

Cat.#	
Job	Type



HUBBELL
Outdoor Lighting



SPAULDING
LIGHTING

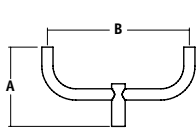
Approvals

ORDERING INFORMATION

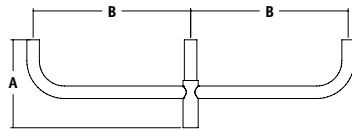
TENON TYPE BRACKETS

(order as separate part #, field installed)

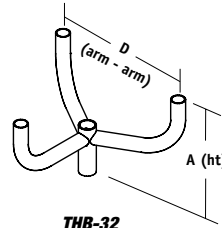
Catalog Number	Maximum Loading		Description	Finish	Weight lbs. (kg)	EPA ft ² (m ²)
	Fixture Qty.	Weight lbs (kg)				
THB-21	2	210 (95.3)	Two tenons at 180°	Bronze	17 (7.7)	.9 (0.1)
THB-21-M53	2	210 (95.3)	Two tenons at 180°	Gray	17 (7.7)	.9 (0.1)
THB-31	3	315 (142.9)	Three tenons at 180°	Bronze	30 (13.6)	1.5 (0.1)
THB-32	3	315 (142.9)	Three tenons at 120°	Bronze	23 (10.4)	1.2 (0.1)
THB-41	4	420 (190.5)	Four tenons at 180°	Bronze	43 (19.5)	2.2 (0.2)
THB-43	4	420 (190.5)	Four tenons at 90°	Bronze	29 (13.1)	1.3 (0.1)



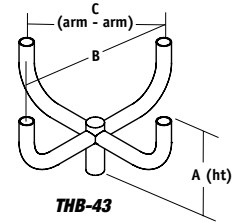
THB-21
THB-21-M53



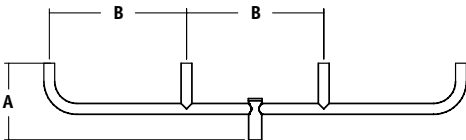
THB-31



THB-32



THB-43



THB-41

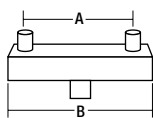
A	B	C	D
17"	30"	21.25"	26"
431 mm	762 mm	539 mm	660 mm

SQUARE STEEL BRACKETS (Project finishes available)

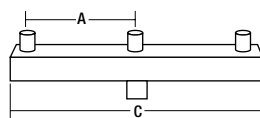
(order as separate part #, field installed)

Catalog Number	Description	Maximum Weight Per Tenon		EPA		Weight	
		lbs.	(kg)	ft ²	(m ²)	lbs.	(kg)
SSB-21-M51	Twin 180°	60	(27.2)	1.2	(0.1)	24	(10.9)
SSB-31-M51	Triple 180°	60	(27.2)	2.3	(0.2)	44	(19.9)
SSB-41-M51	Quad 180°	60	(27.2)	3.4	(0.3)	64	(29)
SSB-43-M51	Quad 90°	60	(27.2)	2.8	(0.3)	46	(20.8)

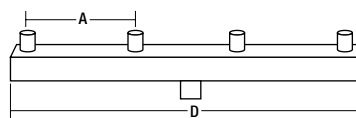
Note: Bronze color standard, for others, add suffix to catalog number: -M50 - Black finish; -M52 - White finish; -M53 - Gray finish.



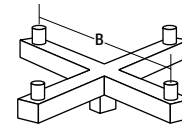
SSB-21



SSB-31



SSB-41



SSB-43

A	B	C	D
24"	30"	54"	78"
610 mm	762 mm	1372 mm	1981 mm



HUBBELL
Lighting