

WGH/WPH

Compact Refractor Wallpack

Pulse Start
Metal Halide
WGH



- WGH Pulse Start metal halide fixtures feature borosilicate glass refractor for non-yellowing. WPH HPS units have polycarbonate refractors for vandal resistance. Stainless steel Phillips head screw closure.
- Cast aluminum housing with 1/2" conduit and photocontrol hubs. Box mounting adapter included.
- 4 to 1 spacing ratio...has two mounting height forward projection.
- 70 and 100 watt HPS and Pulse Start metal halide, 120V lamp included.
- Dark bronze powder paint finish.
- UL 1598 listed for use in wet locations.

ORDERING INFORMATION

Catalog Number	Wattage/Voltage	Finish	Start Temperature	Weight lbs. (kg)
High Pressure Sodium - Polycarbonate Lens				
WPH-100S	100 HPS 120V	Bronze	-40°F	9 (4.1)
WPH-70S	70 HPS 120V	Bronze	-40°F	8 (3.6)
Pulse Start Metal Halide - Glass Refractor				
WGH-100H	100 PS 120/208/240/277V	Bronze	-20°F	10 (4.5)
WGH-70H	70 PS 120/208/240/277V	Bronze	-20°F	9 (4.1)

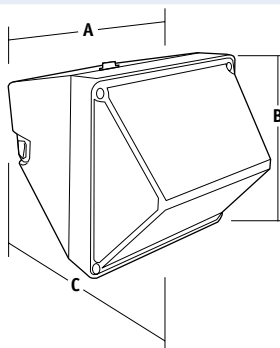
Note Medium Base Lamp included.

ACCESSORIES - Order Separately

Catalog Number	Description
PBT-1	Photocontrol, 120V
PBT-234	Photocontrol, 208, 240, 277V

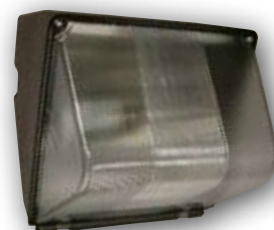
REPLACEMENT PARTS

Catalog Number	Description
SM704-REPLGL	Glass only for WGH
SM704-FRAME/GLASS	Lens Door Assembly for WGH
SM705-LENS	Polycarbonate Refractor only for WPH
SM704-GUARD	Polycarbonate Shield for glass WGH
SM704-SHIELD	Wire Guard for glass WGH



A	B	C
8 1/2"	8 1/2"	8 1/2"
216 mm	216 mm	216 mm

High Pressure Sodium
WPH



Outdoor Lighting