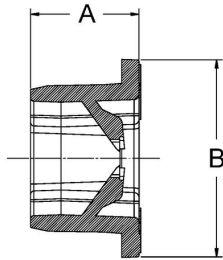




THE INSIDER® SANP-IN TYPE CONNECTORS

THE INSIDER® Nonmetallic Sheathed Cable Connector, Thermoplastic

B76



Catalog #: 4714

APPLICATIONS

Use THE INSIDER® in dry locations to connect one or two runs of Nonmetallic Sheathed Cable (NMSC) to a box

PRODUCT FEATURES

- Installs from inside the box - The unique design allows the installer to run the NMSC through the knockout to the desired length before snapping the connector into the knockout. No need to cut an oversized hole for an old work box and connector installat
- The only NMSC connector that is UL tested for use with an eccentric knockout
- Accepts single and dual runs of NMSC and accomodates one of the widest ranges of NMSC combinations in the industry. No need to stock any other connector.
- Snap-in locking tab design secures THE INSIDER into the removed 1/2 in. knockout securely
- One piece nonmetallic construction - made of tough engineered thermoplastic and can be used in exposed and concealed ceilings and walls. Resists corrosion and offers insulation protection.
- Can be easily removed by pushing one of the locking tabs with a screwdriver

CULUS

UL File E195971

US PATENTS

US Patent 7,211,744

GENERAL PRODUCT INFORMATION

Trade Size: 1/2 in.

DRAWING DIMENSIONS

Dimension A: 5/8 in.
 Dimension B: 1-9/64 in.

PACKAGING

Package Type: Carton
 Std. Pkg.: 100
 Ship Carton Qty.: 1000
 Product UPC-A Labeled: No
 Weight (Lbs. Per/C): 0.9
 Ship Carton Length (in.): 21.3
 Ship Carton Width (in.): 9.8
 Ship Carton Height (in.): 7.5
 Ctn Weight (Lbs.): 8.6
 UPC Number: 050169047149
 I2of5: 50050169047144