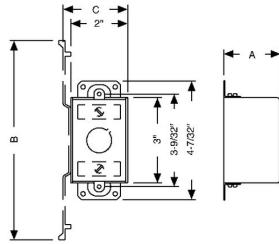




## 3 IN. X 2 IN. SWITCH BOXES - 2-3/4 TO 3-1/2 IN. DEEP WITH NONMETALLIC SHEATHED CABLE CLAMPS

3-1/2 in. Deep Switch Boxes - Gangable with Nonmetallic Sheathed Cable Clamps

A51



Catalog #: 605

### APPLICATIONS

RACO® Switch boxes are used to house wiring devices such as switches and outlets

### PRODUCT FEATURES

Gangable switch boxes offer the option of constructing a box to hold two or more devices  
Reference the Box Selection section in the front of this catalog for complete description of bracket types and features

### UL LISTED

File E195978

### COMPLIANCES

All RACO® single gang, two gang, 4 in. square, and single gang gangable UL listed steel boxes are acceptable for use in 2-hour fire rated walls. For additional information, consult UL "Fire Resistance Directory" or the UL website at [www.ul.com](http://www.ul.com)

### FIRE RESISTANCE

Acceptable for use in 2-hour rated walls

### CSA

N/A

### GENERAL PRODUCT INFORMATION

Wiring System: Nonmetallic Sheathed Cable

### CONFIGURATION

End Knockouts:	(2) 1/2 in.
Ends Cable:	4
Bracket Type:	TS, for Metal or Wood Studs
Bracket Setback:	1/2 in.
Side Knockout(s):	(4) 1/2 in.
Bottom Knockouts(s):	(1) 1/2 in.

### DRAWING DIMENSIONS

Dimension A:	3-1/2 in.
Dimension B:	7 in.
Dimension C:	2-13/64 in.

### PRODUCT MEASUREMENTS

Depth:	3-1/2 in.
Cubic Inches (cm3):	18.0 (295.0)
Wt. Ea. (Lbs.):	0.864
Product Length (in.):	3.5
Product Width (in.):	7
Product Height (in.):	2.203

### PACKAGING

Minimum Pack Qty.:	25
Std. Pkg.:	25
Product UPC-A Labeled:	Yes
Weight (Lbs. Per/C):	86.4
Ship Carton Length (in.):	16.125
Ship Carton Width (in.):	7.75
Ship Carton Height (in.):	11.25
Ctn Weight (Lbs.):	21.6
Pallet Qty:	1650
UPC Number:	050169006054
I2of5:	50050169006059