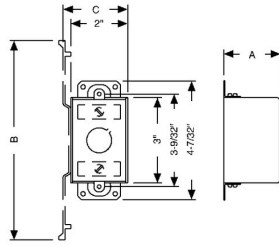




## 3 IN. X 2 IN. SWITCH BOXES - 2 TO 3-1/2 IN. DEEP WITH ARMORED CABLE / METAL CLAD / FLEX CLAMPS

3-1/2 in. Deep Switch Boxes - Gangable with Armored Cable/Metal Clad/Flex Clamps

A49



Catalog #: 600

### APPLICATIONS

RACO® Switch boxes are used to house wiring devices such as switches and outlets

### PRODUCT FEATURES

Gangable switch boxes offer the option of constructing a box to hold two or more devices  
Plaster ears allow a box to be used in "old work" applications

### UL LISTED

File E195978

### COMPLIANCES

All RACO® single gang, two gang, 4 in. square, and single gang gangable UL listed steel boxes are acceptable for use in 2-hour fire rated walls. For additional information, consult UL "Fire Resistance Directory" or the UL website at [www.ul.com](http://www.ul.com)

### FIRE RESISTANCE

Acceptable for use in 2-hour rated walls

### GENERAL PRODUCT INFORMATION

Wiring System: Armored Cable/Metal Clad/MCI-A/Flex

### CONFIGURATION

End Knockouts: (2) 1/2 in.  
Ends Cable: 4  
Bracket Type: No Bracket  
Side Knockout(s): (4) 1/2 in.  
Bottom Knockouts(s): (1) 1/2 in.

### DRAWING DIMENSIONS

Dimension A: 3-1/2 in.

### PRODUCT MEASUREMENTS

Depth: 3-1/2 in.  
Cubic Inches (cm3): 18.0 (295.0)  
Wt. Ea. (Lbs.): 0.796  
Product Length (in.): 3.5  
Product Width (in.): 4.219  
Product Height (in.): 2

### PACKAGING

Minimum Pack Qty.: 25  
Std. Pkg.: 25  
Product UPC-A Labeled: No  
Weight (Lbs. Per/C): 79.6  
Ship Carton Length (in.): 11.125  
Ship Carton Width (in.): 8.5  
Ship Carton Height (in.): 10  
Ctn Weight (Lbs.): 19.9  
Pallet Qty: 2000  
UPC Number: 050169006009  
I2of5: 50050169006004