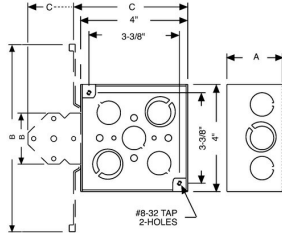




4 IN. SQUARE WELDED BOXES - 2-1/8 IN. DEEP WITH CONDUIT KO'S

4 in. Square Boxes, 2-1/8 in. Deep - Welded with Conduit KO's

A13



Catalog #: 233

APPLICATIONS

RACO® Boxes are installed in walls or ceilings for lighting fixtures, switches or receptacles. Square boxes are used where multiple conductor runs are split into two or more directions to bring power to a number of electrical devices.

PRODUCT FEATURES

Combination screw heads provide for faster installation. TKO® Knockouts offer greater flexibility with RACO patented combination 1/2" and 3/4" knockout. N/A

UL LISTED

File E 195978

COMPLIANCES

All RACO® single gang, two gang, 4 in. square, and single gang gangable UL listed steel boxes are acceptable for use in 2-hour fire rated walls. For additional information, consult UL "Fire Resistance Directory" or the UL website at www.ul.com. 600V Per UL 514-A, suitable for use without a bonding jumper in circuits up to 600 volts.

FIRE RESISTANCE

Acceptable for use in 2-hour rated walls.

GENERAL PRODUCT INFORMATION

Wiring System: Conduit
Country of Origin: USA

CONFIGURATION

Bracket Type: No Bracket
Drawn or Welded: Welded
Raised Ground: No
Side Knockout(s): (8) 1 in.
Bottom Knockouts(s): (3) 1/2 in. & (2) 3/4 in.

DRAWING DIMENSIONS

Dimension A: 2-1/8 in.

PRODUCT MEASUREMENTS

Depth: 2-1/8 in.
Cubic Inches (cm3): 30.3 (496.5)
Wt. Ea. (Lbs.): 0.89
Product Length (in.): 2.188
Product Width (in.): 4
Product Height (in.): 4

PACKAGING

Minimum Pack Qty.: 25
Std. Pkg.: 25
Product UPC-A Labeled: No
Weight (Lbs. Per/C): 89
Ship Carton Length (in.): 18.75
Ship Carton Width (in.): 8.875
Ship Carton Height (in.): 7.375
Ctn Weight (Lbs.): 22.25
Pallet Qty: 1750
UPC Number: 050169902332
I2of5: 50050169902337