

CEILING BOXES AND COVERS



CEILING FAN AND FIXTURE SUPPORT PRODUCTS

APPLICATIONS

- RACO® Ceiling Support Boxes are specifically designed for ceiling fan and ceiling or wall light fixture support

PRODUCT FEATURES

- 1/2" side knockouts (294, 294-1, 296, 296-1 and 299)
- No protruding ground screw or fan mounting screws allows easy installation
- #10-32, 1" long ceiling fan screws provided and provision for #8-32 fixture mounting screw (291-1, 294-1, 294, 296-1, 296 and 299)
- Setback tab allows for easy box installation of different wall thickness (294-1, 294)
- Metal protection plate eliminates debris or damage to wiring
- Easy to follow instructions and mounting hardware included
- Graduated markings for 1/2" to 1-1/4" thick sheetrock (Cat. No. 291-1)

GORILLA RING® CONCRETE RING APPLICATION

- Concrete rings are used with poured deck (floor) in high-rise construction
- GORILLA RING features mounting screws that allow for safe and secure mounting of any chandeliers, or lighting fixtures 70 lbs. or less
- Double row of KO's allow greater installation flexibility with a minimum of bends or offsets for working around reinforcing rods

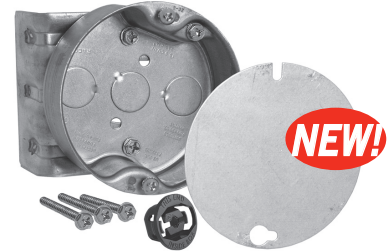
COMPLIANCE

- UL File E195978

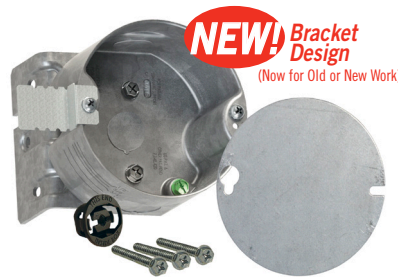
U.S. Patents 7,148,420, 7,211,744



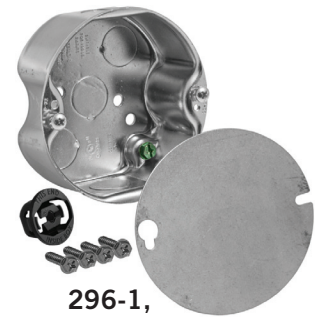
295-1, 295



291-1



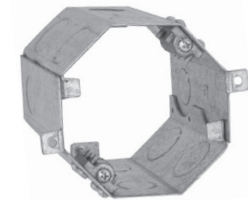
294-1, 294



296-1, 296



299



GORILLA-RING® 284

CAT. #	DESCRIPTION	CUBIC INCHES (CM ³)	KNOCKOUTS			RECOMMENDED MAX. LOADS		STD. PKG.	BAR CODE
			CABLE PRIORTS	SIDES CONDUIT	BOTTOM CONDUIT	CEILING FAN (DYNAMIC) LBS.	FIXTURE (STATIC) LBS.		
4" Round Ceiling Fan Pan – Drawn with Conduit KO's									
295-1	1/2" Depth	6.0 (98.3)	INSIDER	—	(5) 1/2"	70	150	10	—
295*	1/2" Depth	6.0 (98.3)	INSIDER	—	(5) 1/2"	70	150	10	
4" Round Ceiling Box – Drawn with Conduit KO's									
NEW 291-1	1-1/2" Depth	15.8 (258.9)	INSIDER	—	(3) 1/2"	70	150	20	—
NEW 294-1	2-1/8" Depth, Old and New Work	22.3 (365.4)	INSIDER	(2) 1/2"	(1) 1/2"	70	70/150**	10	—
294*	2-1/8" Depth, Old and New Work	22.3 (365.4)	INSIDER	(2) 1/2"	(1) 1/2"	70	70/150**	10	
296-1	1-1/2" Depth	15.8 (258.9)	INSIDER	(2) 1/2"	(3) 1/2"	70	150	20	—
296*	1-1/2" Depth	15.8 (258.9)	INSIDER	(2) 1/2"	(3) 1/2"	70	150	8	
299*	2-1/8" Depth	22.4 (367.1)	INSIDER	(2) 1/2"	(3) 1/2"	70	150	6	
GORILLA-RING® – Concrete Ring for Ceiling Fan Support									
284	4" Deep, Double Row Side Knockouts	49.3 (807.9)	—	(4) 3/4" (6) 1/2"	—	35	70	6	—

* Packaged in a stackable, individual chipboard display cartons. Sold in master carton quantities only. Hubbell® RACO® does not break carton quantities on these items. 4714, THE INSIDER® will secure nonmetallic sheathed cable in 1/2" KO (See pg. B75).

** New work applications rated at 150 lbs. Old work applications rated at 70 lbs.



SEE END OF SECTION (PG A68) FOR DETAILED DRAWINGS >>