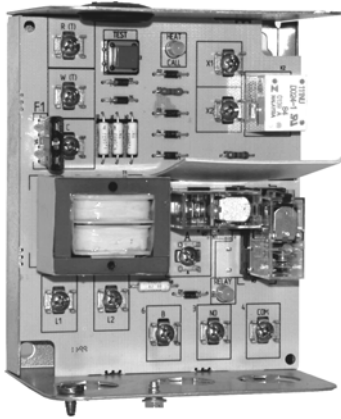


Hydronic Switching Relays

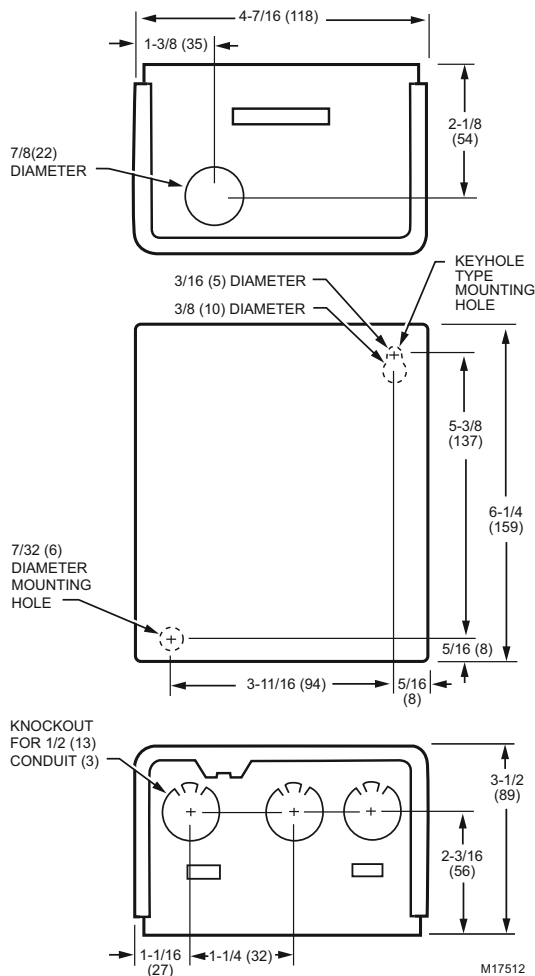
R8845U Universal Switching Relay



The R8845U Universal Switching Relay with 24 V transformer provides intermediate switching of line- and low-voltage devices from a line- or low-voltage controller and is typically applied in Hydronic heating systems.

- Replaceable socketed relays.
- Two troubleshooting LED.
- Push-to-test button.
- Replaceable transformer fuse.
- Low-voltage contact rating for Powerpile applications.
- Long-life DC relay drive control technology.
- Relay for use with external 24 Vac or 24 Vdc supply, with line-voltage control, or with internal 24 V transformer supply.
- One model replaces many competitor models.
- One model may replace many Honeywell models: R182A,B,C,J; R482A,B,C,J; R845; R882A,B,C,J and RA832.

Dimensions in inches (millimeters)



Application: Provides intermediate switching of line and low voltage devices from a line or low voltage controller

Dimensions, Approximate: 6 1/4 in. high x 4 7/16 in. wide x 3 1/2 in. deep (159 mm high x 118 mm wide x 89 mm deep)

Electrical Connections (Control Circuit): 2 or 3-wire

Electrical Ratings: Primary Voltage: 120V; 60 Hz

Contact Electrical Ratings

120 Vac AFL: 7.4A AFL, 44.4A ALR on each set of line-voltage contacts. Maximum connected load is 2000 VA.

Transformer Primary Rating: 120 Vac, 60 Hz

Transformer Secondary Rating: 24 Vac, 12 VA max., 9 VA available for external load. Secondary protected by replaceable 1A automotive fuse.

Thermostat Compatibility: Honeywell electromechanical and electronic 2- or 3-wire

Thermostat Heat Anticipator Setting: 0.12A

Temperature Range: (Ambient) -20 F to +120 F

((Ambient) -29 C to +49 C)

Operating Humidity Range (% RH): 0 to 90% RH, non-condensing

Replacement Parts: 32002190-001 Replacement Relays.

Replacement Fuse: use a 1 A automotive fuse.

Approvals:

Underwriters' Laboratories of Canada: Listed: Guide No. XAPX7.

Underwriters Laboratories Inc. Listed: File No. E4436, Guide No. XAPX

Product Number	Coil Ratings		Switching Action	Description	Includes
	Voltage	Current			
R8845U1003	24 Vac	0.4A	Two SPST, plus PowerPile® rated low voltage SPST relay. (If normally closed contacts are needed, use RA889A).	Universal switching relay with internal transformer, two line voltage SPST relays and one low voltage SPST relay with PowerPile rating.	Integral transformer, enclosure