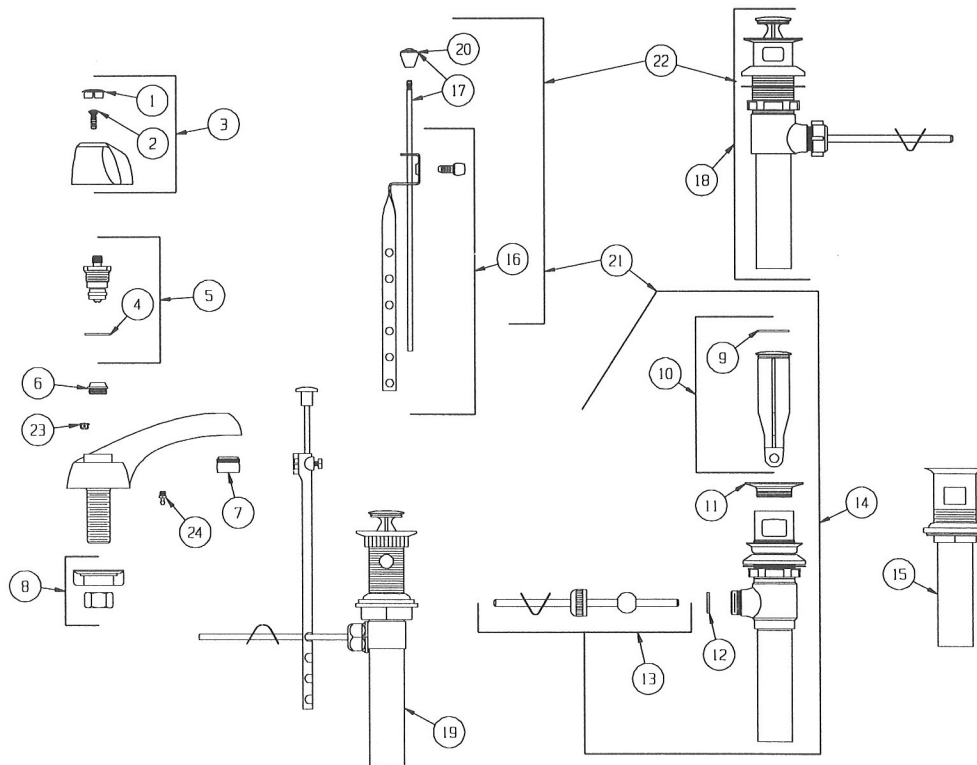


43-411, 43-412, 43-413, 43-431, 43-432, 43-451

Prefixes: C0, C8

Suffixes: 47, 49, 60, 63, 65, 66, 67, 68, 95, 96

ITEM NO.	DESCRIPTION	UN-FINISHED	CHROME
1	"C" INDEX BUTTON	94-252	
	"H" INDEX BUTTON	94-251	
2	HANDLE SCREW	90-700	
3	STANDARD HANDLE S/A, HOT		97-908
	STANDARD HANDLE S/A, COLD		97-909
	STANDARD HANDLE PACK, HOT & COLD, W/KNOB		60-001
4	CELCON WASHER	90-331	
5	HOT STEM & BONNET S/A	98-688	
	COLD STEM & BONNET S/A	98-689	
6	BRASS SEAT	90-161	
7	MALE AERATOR		91-569
8	PLASTIC SHANK NUT & LOCK NUT (QTY 2 EA.)	97-800	
	BRASS SHANK NUT & LOCK NUT (QTY 2 EA.)	97-804	
	ZINC DIE CAST SHANK NUT & LOCK NUT (QTY 2 EA.)	97-799	
9	O-RING	90-741	
10	POP-UP PLUNGER / O-RING S/A		97-731
11	FLANGE FOR CAST POP-UP DRAIN		90-731
12	PACKING FOR LAVATORY DRAIN	90-832	
13	BALL, ROD, NUT, & CLEVIS S/A		97-733
14	CAST POP-UP LAVATORY DRAIN S/A		97-773
15	GRID STRAINER LAVATORY DRAIN		43-970
16	POP-UP EXTENSION S/A		97-340
17	POP-UP KNOB & ROD S/A		97-722
18	50 / 50 LAVATORY POP-UP DRAIN		97-769
19	ABS LAVATORY POP-UP DRAIN		97-770
20	POP-UP KNOB		86-813
21	CAST POP-UP DRAIN KIT (INCLUDES ITEMS 14, 16, 17)		43-973
22	50 / 50 POP-UP DRAIN KIT (INCLUDES ITEMS 16, 17, 18)		43-969
23	BUTTON FOR POP-UP HOLE		90-110
24	CHAIN STAY		91-490



See the Index for a Description of Prefixes & Suffixes