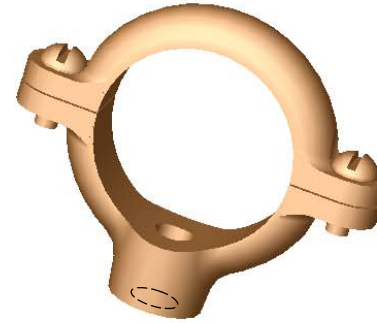
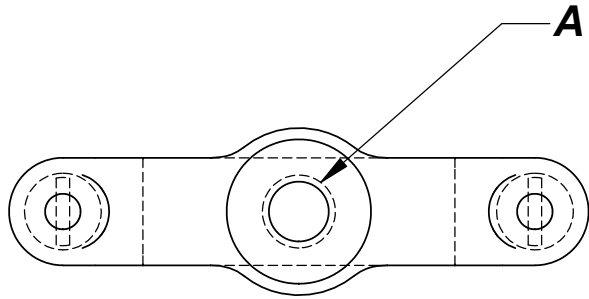
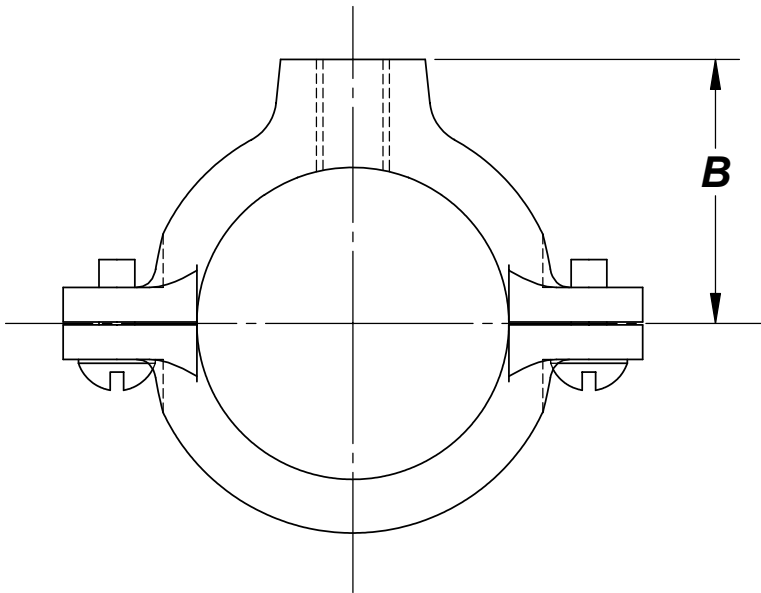


THE INFORMATION CONTAINED IN THIS DRAWING IS THE SOLE PROPERTY OF GREENFIELD MFG CO ANY REPRODUCTION IN PART OR WHOLE WITHOUT THE WRITTEN PERMISSION OF GREENFIELD MFG CO IS PROHIBITED.



**FOR COPPER TUBING**

TUBE SIZE	A	B	WT / C APPROX	MAX REC LOAD
3/8	3/8	0.62	8	180
1/2	3/8	0.69	8	180
3/4	3/8	0.82	9	180
1	3/8	0.94	11	180
1-1/4	3/8	1.07	12	180
1 - 1/2	3/8	1.20	14	180
2	3/8	1.44	23	180
2 - 1/2	1/2	1.84	47	300
3	1/2	2.10	50	300
4	1/2	2.60	90	300



**COMPLIES WITH WWH-171D TYP 25**

UNLESS OTHERWISE SPECIFIED DIMENSIONS ARE IN INCHES  TOLERANCES ARE: FRACTIONS    DECIMALS    ANGLES +/- 1/8    .XX +/- .03    .XX + 1 .XXX +/- .01	CAD GENERATED DRAWING, DO NOT MANUALLY UPDATE		<b>GREENFIELD MFG CO</b>  920 LEVICK ST , PHILA.,PA. 19111	
	APPROVALS DRAWN    EG CHECKED    SB	DATE <b>11/05</b> <b>11/05</b>	<b>COPPER PLATED          SPLIT RING HANGER</b>	
MATERIAL  <b>DUCTILE IRON          COPPER PLATED</b>	SCALE CAD FILE: <b>485.SLDDRW</b>		P/N <b>FIG 485</b> REV.	
DO NOT SCALE DRAWING		SHEET OF		