

THE INFORMATION CONTAINED IN THIS DRAWING IS THE SOLE PROPERTY OF GREENFIELD MFG CO ANY REPRODUCTION IN PART OR WHOLE WITHOUT THE WRITTEN PERMISSION OF GREENFIELD MFG CO IS PROHIBITED.

APPROVALS:

LISTED

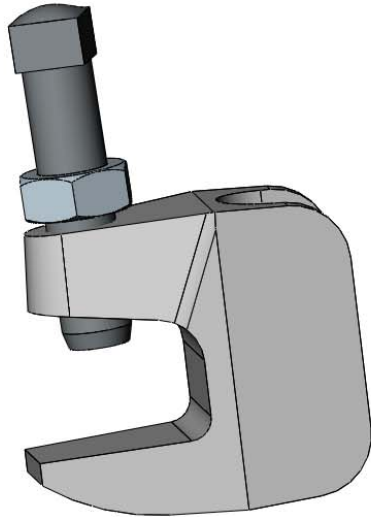
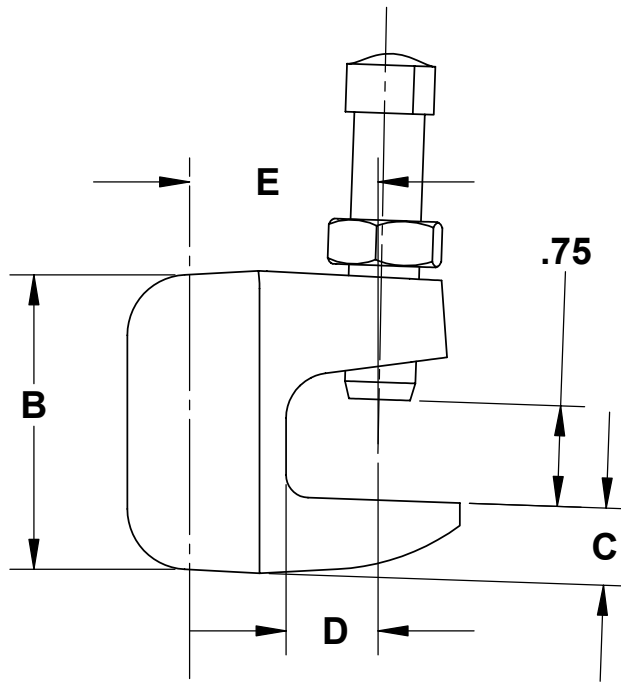
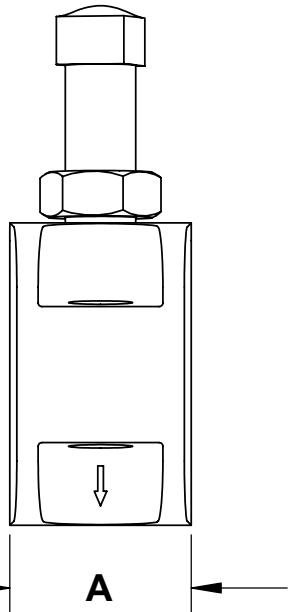


APPROVED



COMPLIES WITH MSS SP-58 TYPE 19

SEE MSS SP-69 FOR PROPER SET SCREW RECOMMENDATIONS



ROD SIZE	WT PER 100 PCS	MAX REC LOAD	CTN QTY	A	B	C	D	E
3/8	28	350#	100	.88	1.50	.31	.50	1.00
1/2	34	470#	100	.88	1.50	.31	.50	1.00
5/8	42	550#	50	1.12	1.75	.34	.63	1.37
3/4	80	700#	50	1.37	1.87	.41	.63	1.37
7/8	84	1000#	25	1.37	1.87	.41	.63	1.37

UNLESS OTHERWISE SPECIFIED DIMENSIONS ARE IN INCHES

TOLERANCES ARE:

FRACTIONS DECIMALS ANGLES
 +/- 1/8 .XX +/- .03 .XX + 1
 .XXX +/- .01

MATERIAL **DUCTILE IRON
ZINC PLATED**

DO NOT SCALE DRAWING

CAD GENERATED DRAWING.
DO NOT MANUALLY UPDATE

APPROVALS DATE

DRAWN EG

CHECKED SB

GREENFIELD MFG CO

920 LEVICK ST , PHILA.,PA. 19111

**JUNIOR
TOP BEAM CLAMP**

FIG 325

A P/N REV.

SCALE CAD FILE: SHEET OF