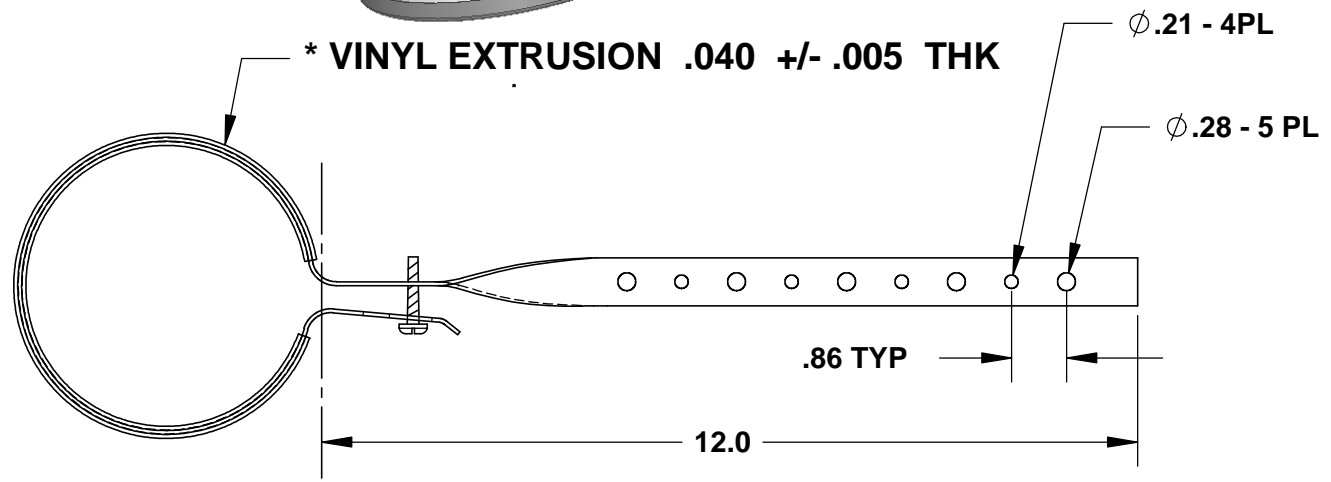
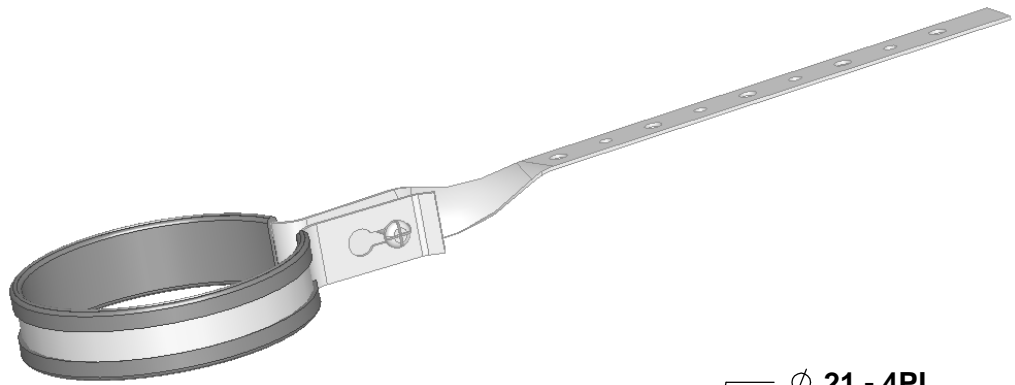


THE INFORMATION CONTAINED IN THIS DRAWING IS THE SOLE PROPERTY OF GREENFIELD MFG CO ANY REPRODUCTION IN PART OR WHOLE WITHOUT THE WRITTEN PERMISSION OF GREENFIELD MFG CO IS PROHIBITED.
 © COPYRIGHT GREENFIELD MANUFACTURING 2007

MADE IN USA



SIZE	MATERIAL
1-1/2	18 GA X 0.75
2	18 GA X 0.75
3	16 GA X 0.75
4	16 GA X 0.75
6	16 GA X 0.75

MAX RECOMMENDED LOAD 150 LBS
MAX TEMPERATURE 150° F

* EXTRUSION COATING MATERIAL:
 SYLVIN 8925-80
 HARDNESS 80-90 A DUROMETER
 TENSIL STRENGTH 2400
 ELOGATION % 375

UNLESS OTHERWISE SPECIFIED DIMENSIONS ARE IN INCHES TOLERANCES ARE: FRACTIONS DECIMALS ANGLES + .XX+ .XX + 1 .XXX+.XXX	CAD GENERATED DRAWING, DO NOT MANUALLY UPDATE		GREENFIELD MFG CO	
	APPROVALS	DATE	920 LEVICK ST , PHILA.,PA. 19111	
	DRAWN EG	1/12	P/N DWV COATED	
MATERIAL STEEL GALVANZED	CHECKED SB	1/12	A FIG 320 REV.	
FINISH --	DO NOT SCALE DRAWING		SCALE	CAD FILE: FIG320W.SLD SHEET OF