

FIREX®

Accessory

Hearing Impaired Kit

Item: 252

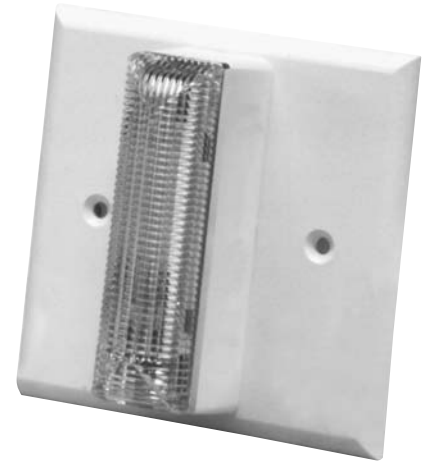
Why Install a FireX® Hearing Impaired Kit?

FireX Hearing Impaired Kits provide contractors and specialized application users with the reliable and trouble free performance they expect from FireX. They meet all national building code requirements including, but not limited to UL 1971, Signaling Appliances for the hearing impaired.

Description

The FireX® 252 Hearing Impaired Kit features a Multi-Function Relay Module, strobe light (177 candela), and a wiring instruction sheet. The Multi-Function Relay Module is user selectable to respond to smoke alarms only, CO alarms only, or both. The strobe light utilizes a Xenon flash tube which generates a high-intensity light, visible from all sides of the lens. The 240B strobe light is intended to provide a visible notification signal for the purpose of life safety and property protection. If you require multiple signaling devices for different areas of a building, simply add additional FireX 240B strobes. You can operate up to five additional FireX 240B strobes, in addition to the strobe that comes with the 252 kit.

The 252 Hearing Impaired Kit is ideal for hotels, apartments, hospitals, assisted living homes or whenever visible alarms are required.



240B
Strobe Light



501
Relay

Features and Benefits

Meet the growing demand for smoke alarms for the hearing impaired.

Exceeds UL Standard 1971 "Signaling Devices for the Hearing Impaired" and ADA (American Disabilities Act) "Standard for Visual Alarms".

Allows for the remote placement of strobe light for maximum effectiveness.

User selectable to respond to: smoke alarm only, CO alarm only, and both CO and smoke alarms.

An ISO 9001 – 2000 Certified Company

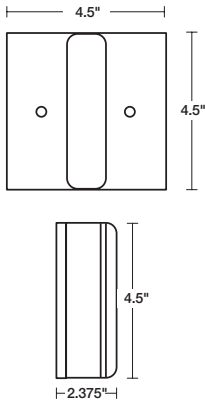


5 Year
Limited
Warranty

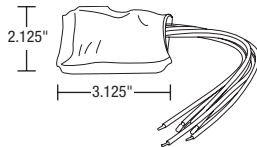
120V AC
Direct Wire

Hearing Impaired Kit

Strobe Dimensions



Relay Dimensions



Shipping Specifications

Individual Carton Dimensions	5-7/8" 5" x 5-1/16"
Master Carton Quantity	1
Master Carton Dimensions	5-7/8" 5" x 5-1/16"
Master Carton Weight	.90 lbs.
Pallet Quantity	512
Pallet Dimensions	48"L x 40"W x 46"D

Ordering Data

Item No.	Description	Agency Listing	Packaging
252	Kit		carton
240B	Strobe - blank	UL	carton
501	Relay	cUL	carton



240
Strobe FIRE lettering



501
Relay



240B
Strobe blank

invensys. Controls

191 E. North Avenue
Carol Stream Illinois 60188 USA
Customer Service Telephone 1.800.951.5526
Customer Service Facsimile 1.630.260.7299
iccacustomerservice@invensys.com
www.FireXsafety.com
©2007 Invensys Controls

3505 Laird Road Unit #14
Mississauga Ontario L5L 5Y7 Canada
Customer Service Telephone 1.800.387.7978
Customer Service Facsimile 1.905.828.1265
iccacustomerservice@invensys.com

For Technical Service
Telephone 1.800.445.8299
Facsimile 1.630.260.7243
technicalservice@invensys.com

Invensys® and FireX® are trademarks of Invensys plc., its subsidiaries or affiliated companies.

6/07 - 150-1985C

FIREX®

Accessory

Technical Specifications

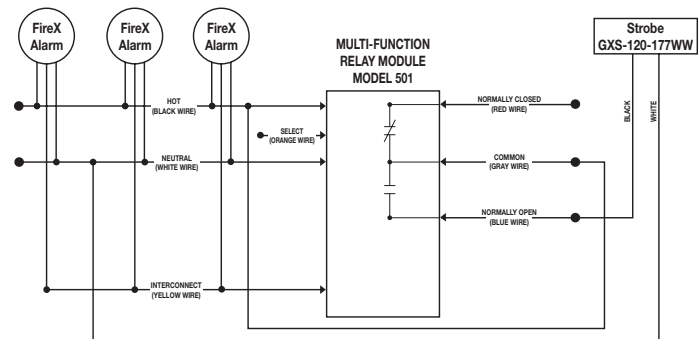
Product Weight	1.3 lbs.
Operating Temperature	40°F to 100°F (4°C to 38°C)
Interconnect Qty.	Up to 6 accessories in addition to 18 alarms. This signaling device can be used only with the following FireX Smoke, Smoke/CO, and CO alarm models (and item number series): G-6 (406 series), G-18 (418 series), PG-40 (484 series), FADC (4618 and 5000 series), AD (4418 and 1018 series), ADC (4518 series), GC (4121 series), PAD (4480 series), FADCM (12000 series), GCM (12400 series), COE (10000 series), or COEA (10400 series). These are low-voltage interconnect alarms with a YELLOW interconnect wire.
Electrical Rating	120V AC, 60Hz, 214mA max.
Listing	240B - UL1971, 501 - UL217

Installation

This smoke alarm should be installed in accordance with the NFPA's Standard 72 (National Fire Protection Association, Batterymarch Park, Quincy, MA 02269) and any local codes that apply.

DO NOT connect to any other type or model of heat or smoke alarm. Connect smoke to a single AC branch circuit. If local codes do not permit, be sure the neutral wire is common to both phases.

As shown - will respond to smoke only.



Select (Orange Wire) Connection Chart

Responds to:	Connected to:
CO Alarm Only	Hot (Black Wire)
Smoke Alarm Only	Not connected (cap, tape, or wire nut)
Both CO and Smoke Alarm	Neutral (White Wire)