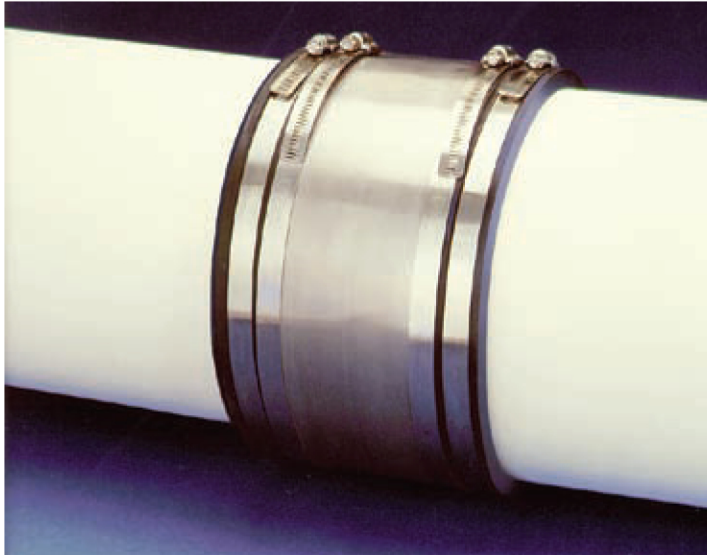


# Stainless Steel Shear Rings

Add extra strength to just about any size Fernco coupling.



Available for Fernco's 1-1/2" to 15" couplings  
with **CUSTOM SIZES** available.

## SHEAR RING TECHNICAL SPECS

- Series 300 stainless steel bands, nuts, and housings
- Designed to fit Fernco coupling series:
 

1001 - Clay to Clay	1055 - AC to AC
1004 - Concrete to Concrete	1056 - CI/Plastic to CI/Plastic

Fernco's stainless steel shear rings are easy to attach and help maintain proper alignment in even the most unstable ground conditions. Bushings are supplied separately for material transition and size reduction.

*Stocked separately for convenient use with your regular inventory.*

Part No.	Fits Fernco Coupling Part No.	Length	Width	Band Size
SR-9	1056-150	9"	1.5"	32
SR-11	1056-22	11"	1.5"	44
SR-15	1056-33	15"	2"	64
SR-19	1056-44, 1055-44	19"	2"	88
SR-22	1001-44, 1004-44, 1056-55	22"	2"	96
SR-25	1056-66	25"	4"	116
SR-27	1001-66, 1055-66	27"	4"	128
SR-28	1004-66	28"	4"	140
SR-33	1056-88	33"	4"	152
SR-35	1001-88, 1055-88	35"	4"	164
SR-37	1004-88	37"	4"	184
SR-39	1055-1010, 1056-1010	39"	4"	184
SR-46	1001-1010, 1004-1010, 1051-1212, 1055-1212, 1056-1212	46"	4"	(2) 116
SR-54	1001-1212, 1004-1212, 1056-1515	54"	4"	(2) 128
SR-59	1001-1515	59"	4"	(2) 152
SR-63	1056-1818	63"	4"	164 & 152
SR-73	1056-2121	73"	4"	(2) 184

