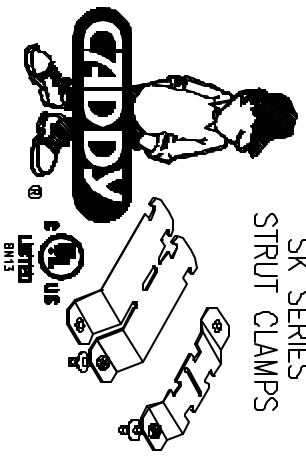


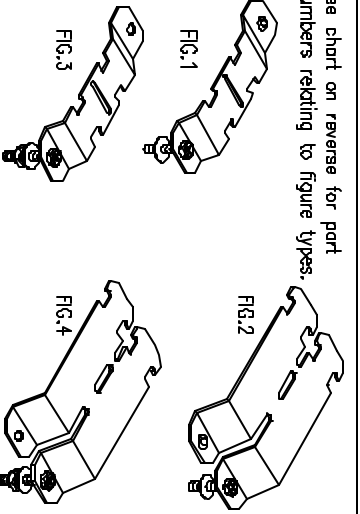


SK SERIES STRUT CLAMPS



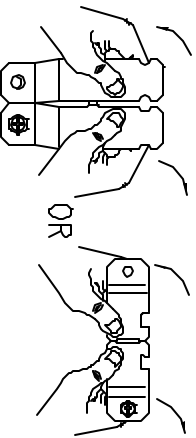
SK SERIES STRUT CLAMPS

See chart on reverse for part numbers relating to figure types.

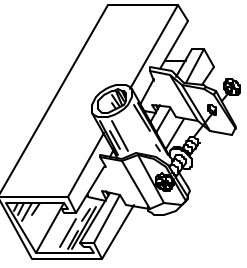


INSTALLATION FOR STRUT CLAMPS

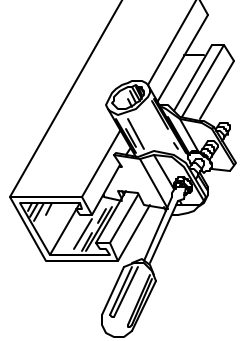
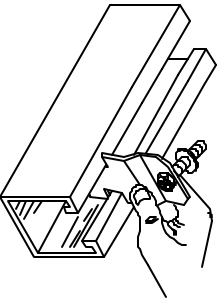
A. Twist clamp until separated.



C. Capture the tubing or pipe and insert bolt into thread impression, thread extrusion, or use nut to assemble, depending on model clamp that is used.



D. Tighten bolt with wrench or screwdriver until tubing or pipe is held securely.



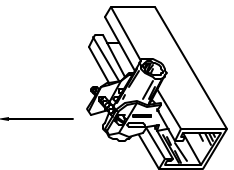
APPLICATION GUIDE

CHOOSE THE APPROPRIATE FASTENER BASED UPON THE INTENDED APPLICATION. REFER TO THE CHARTS BELOW FOR FASTENER SIZE.

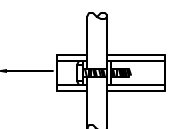
MATERIAL	CATALOG NUMBER	FIGURE NUMBER	EMT/RIGID	STATIC TENSION LIMIT (LBS.)	BOX/CASE QUANTITY
STEEL*	SK851	1	1/2"	200	100/600
	SK1251	1	3/4"	200	100/600
	SK1651	1	1"	200	100/600
	SK2051	1	1-1/4"	200	100/600
	SK2451	1	1-1/2"	200	50/300
	SK3251	1	2"	200	50/300
	SK4051	2	2-1/2"	350	50/300
	SK4851	2	3"	350	50/300
	SK5651	2	3-1/2"	350	25/150
	SK6451	2	4"	350	25/150
	SK68A	3	1/2"	150	100/600
	SK12A	3	3/4"	150	100/600
	SK16A	3	1"	150	100/600
	SK20A	3	1-1/4"	150	100/600
ALUMINUM**	SK24A	3	1-1/2"	150	50/300
	SK32A	3	2"	150	50/300
	SK40A	4	2-1/2"	200	50/300
	SK48A	4	3"	200	50/300
	SK56A	4	3-1/2"	200	25/150
	SK64A	4	4"	200	25/150

* Features captured special combo bolt and thread impression on these catalog numbers.

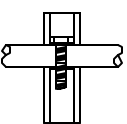
** Features captured special combo bolt and hex nut. Use ERICO® RIGID series for Rigid, iron, PVC pipe and for stainless or yellow dichromate ("Cal Gold") applications. Use ERICO® COPC series for copper tubing applications.



SEE CHART FOR STATIC TENSION LOAD LIMIT



ULTIMATE STATIC SHEAR LOAD LIMIT 75 LBS.



ULTIMATE STATIC SLIP LOAD LIMIT 50 LBS.

WARNINGS:

1. Use proper supports, ladders, intermediate components and fasteners of attachments made "ON" to be used to support pipe, tubing or conduit in stacked levels and are ERICO to be used for any other purpose and longer on adjacent "OFF" for "SUPPORT" when using alternate notes.
2. All joints between clamps and components shall be one (1) inch for pipe and one (1) inch for tubing or conduit.
3. All joints between clamps and components shall be one (1) inch for pipe and one (1) inch for tubing or conduit.
4. THE "PROTECTIVE" Safety Requirements of National Fire Protection Assoc. (NFPA) paragraphs 11, 12, 13, 14, 15, 16, 17, & Factory Mutual Property Loss Prevention Data Sheet No. 3-41.
5. Section No. 3-41-13.
6. Personnel must understand and use the correct procedure for the application of the clamp. The correct procedure is as follows:
7. The clamp "ON" or "OFF" is responsible for:
 - a. Application of correct procedure.
 - b. Application of correct procedure.
 - c. Application of correct procedure.
 - d. Application of correct procedure.
8. Failure to follow these instructions may cause product malfunctions resulting in property damage or injury. ERICO Products of the line of support, are warranted to conform to any applicable written specifications furnished to the Buyer by ERICO, and to be free from defects in material and workmanship. NO OTHER WARRANTY, WHETHER EXPRESSED OR IMPLIED, INCLUDING ANY WARRANTY OF MERCHANTABILITY OR FITNESS FOR A PARTICULAR PURPOSE, SHALL ERICO IN CONNECTION WITH THE SALE OF THIS OR ANY OTHER PRODUCT.

SAFETY INSTRUCTIONS: All safety regulations required by the job site must be followed. Special attention should be given to the following instructions:

1. Closure of Federal and local safety regulations.
2. Never safety valves with open ends.
3. Use correct personal working clothes and shoes.
4. Never a hard hat.
5. Never gloves to avoid splinters and cuts.
6. Use correct ladder safety techniques.
7. All support "ON" weight.



© 2001 ERICO, INC.

CS1922

PRINTED IN U.S.A.

TECHNICAL SUPPORT PHONE:
(800) 28-CADDY
(1-800-222-2339)



© 2001 ERICO, INC.

CS1922

PRINTED IN U.S.A.

TECHNICAL SUPPORT PHONE:
(800) 28-CADDY
(1-800-222-2339)

