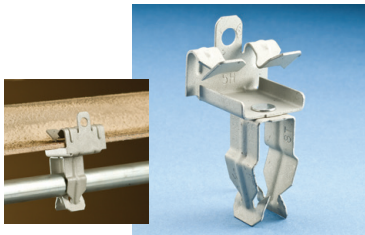


Cable/Conduit

BEAM - PUSH IN CLAMPS

EM-P CONDUIT TO FLANGE CLIP

- Requires only a hammer to install
- Available for EMT, rigid, IMT and aluminum conduit
- Will pivot thru 360°



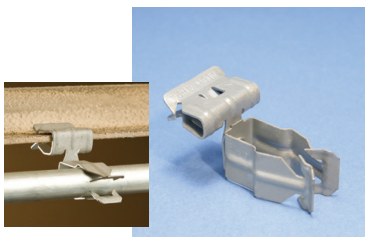
Material: Spring Steel

Finish: Armour

Part Number	Description	F ↓	☐
8P24	1/2" EMT, 1/8"-1/4" Flange	25 lb	100 pc
8P58	1/2" EMT, 5/16"-1/2" Flange	25 lb	100 pc
8P912	1/2" EMT, 9/16"-3/4" Flange	25 lb	50 pc
12P24	3/4" EMT, 1/2" Rigid, 1/8"-1/4" Flange	25 lb	100 pc
12P58	3/4" EMT, 1/2" Rigid, 5/16"-1/2" Flange	25 lb	100 pc
12P912	3/4" EMT, 1/2" Rigid, 9/16"-3/4" Flange	25 lb	100 pc
16P24	1" EMT, 3/4" Rigid, 1/8"-1/4" Flange	25 lb	100 pc
16P58	1" EMT, 3/4" Rigid, 5/16"-1/2" Flange	25 lb	50 pc
16P912	1" EMT, 3/4" Rigid, 9/16"-3/4" Flange	25 lb	50 pc

H-PSM CONDUIT TO FLANGE CLIP, SIDE MOUNT

- Requires only a hammer to install
- Available for EMT, rigid and aluminum conduit
- Will pivot thru 360°



Orientation: Side Mount

Material: Spring Steel

Finish: Armour

Part Number	Description	F ↓	☐
8P24SM	1/2" EMT, 1/8"-1/4" Flange	15 lb	100 pc
8P58SM	1/2" EMT, 5/16"-1/2" Flange	15 lb	100 pc
8P912SM	1/2" EMT, 9/16"-3/4" Flange	15 lb	100 pc
12P24SM	3/4" EMT, 1/8"-1/4" Flange	15 lb	100 pc
12P58SM	3/4" EMT, 5/16"-1/2" Flange	15 lb	100 pc
12P912SM	3/4" EMT, 9/16"-3/4" Flange	15 lb	50 pc
16P24SM	1" EMT, 1/8"-1/4" Flange	15 lb	100 pc
16P58SM	1" EMT, 5/16"-1/2" Flange	15 lb	100 pc
16P912SM	1" EMT, 9/16"-3/4" Flange	15 lb	50 pc

Indicated loads are ultimate and should not be combined.