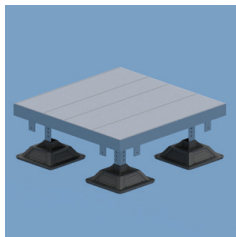


# Pyramid Rooftop Systems

## PYRAMID CROSSOVERS AND WALKWAYS

### PYRAMID CROSSOVER PLATFORM

- Height adjustable interlocking platforms allow for quick and easy installation of a custom pathway across rooftop surfaces
- Protect roof surfaces by providing a clearly defined pathway
- Modular design allows for easily configurable heights and lengths to address varying applications
- Pyramid bases provide superior load distribution and roof membrane compatibility
- Foam bottom offers low abrasion interface for better roof membrane protection
- Aluminum construction designed to withstand harsh environments
- Walking surfaces with serrated tread provides maximum slip resistance and drainage

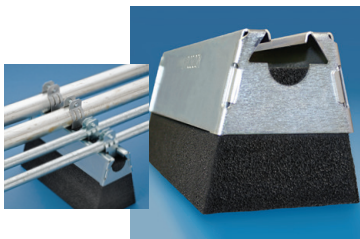


Material: Aluminum, Polypropylene, Polyethylene

Part Number	Description	
PCP36	Pyramid Crossover Platform	1 pc

### PYRAMID 50 FOAM-BASED SUPPORT



- Replaces slow and labor-intensive installation methods
- Supports pipe, conduit, cable tray and equipment on roofs and below raised floors
- Easily increase load capacity by combining similar Pyramid supports
- Protects the roof membrane while absorbing shock and vibration, without absorbing water
- Metal cover protects against weather and other environmental conditions, such as bird damage



Patent No.: 7,735,270

Material: Steel, Polyethylene

Static Load Safety Factor: 3:1

Part Number	Description		
<b>Finish: ElectroGalvanized</b>			
RPS50H4EG	EG, 4"	50 lb	10 pc
RPS50H6EG	EG, 6"	50 lb	10 pc
<b>Finish: Hot-Dip Galvanized</b>			
RPS50H4HD	HD, 4"	50 lb	10 pc
RPS50H6HD	HD, 6"	50 lb	10 pc