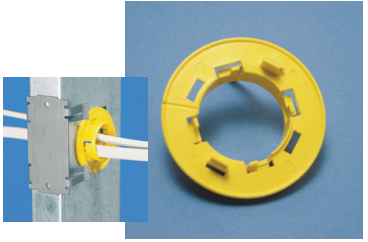


Stud Wall

THROUGH STUD CABLE/CONDUIT SUPPORTS

EASY SNAP GROMMET

- Provides 360° protection for cable, conduit, plumbing and fire sprinkler plumbing in metal studs
- Snap one grommet into standard 1-11/32" field punched hole, or snap two together into any shape factory-punched hole
- Grommet can be split for use on pre-existing installations

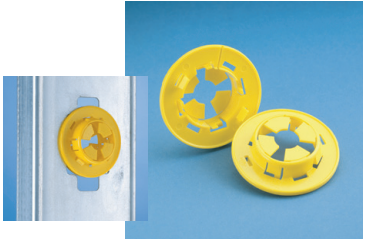


Material: Polyethylene


Part Number	Description	
ESG1	1.315" OD	100 pc
ESG1BP	1.315" OD	8 pc
ESG1M	1.315" OD	1,000 pc

EASY SNAP GROMMET WITH ANTI-RATTLE PROTECTION

- Provides anti-rattle protection
- Snap one grommet into standard 1-11/32" field punched hole, or snap two together into any shape factory-punched hole
- Grommet can be split for use on pre-existing installations



Material: Polyethylene

Part Number	Description	
ESGP	1" Max Copper Tube, 1/2", 3/4" EMT, 1/2", 3/4" Rigid/Pipe	100 pc