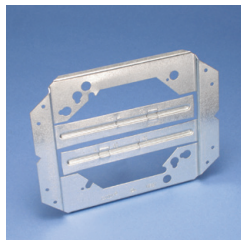


Stud Wall

STUD MOUNTED BOX BRACKETS

"MOUNTS ELECTRICAL BOXES" BRACKET

- Design simplifies handling, reduces inventory and saves space
- Requires only a screw gun to install
- V-notched on center allows for consistent positioning
- Built-in support legs reduce box movement
- Can be used with EMT; ideal for flexible conduit, MC/AC or non-metallic sheathed cable
- Can be pre-assembled in the shop to allow for greater efficiency at the job site
- Plaster rings can be mounted separately eliminating the need for an electrical box for low-voltage applications
- MP Series brackets can be attached in-line to the MEB1 for low voltage applications
- Mounts on either side of stud without need to reposition box



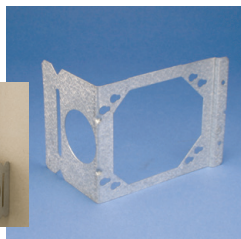
Material: Steel
Finish: Pregalvanized



Part Number	Description	
MEB1	2 1/2", 3 1/2", 4" Wall Depth	25 pc


ELECTRICAL BOX BRACKET TO STUD

- Easily attaches 4" and 4 11/16" outlet boxes to metal or wood studs
- Support leg reduces movement of box in wall
- Offset design and use of SMS8 low profile self-tapping screws (not included) reduce dry wall bulge



Material: Steel
Finish: Pregalvanized



Part Number	Description		Certifications
H23	2 1/2", 3 1/2" Wall Depth	100 pc	cULus
H23TC (Canada)	2 1/2", 3 1/2" Wall Depth	100 pc	—
H4	4" Wall Depth	100 pc	cULus
H6	6" Wall Depth	50 pc	cULus
H46TC (Canada)	4", 6" Wall Depth	50 pc	cULus