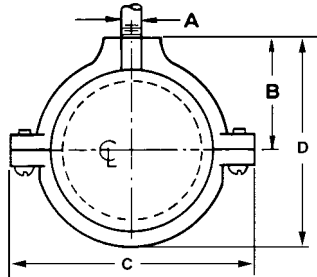


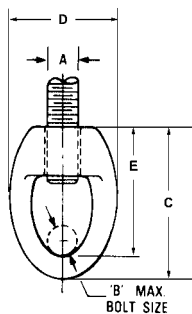
**FIG. 41SSI 304 STAINLESS STEEL
FIG. 41SXI 316 STAINLESS STEEL
SPLIT RING EXTENSION HANGER**



- Material:** 304 (41SSI) and 316 (41SXI) stainless steel.
Service: Designed for the suspension of non-insulated stationary pipe lines, horizontally or vertically.
Approvals: Complies with Manufacturers' Standardization Society MSS SP-58 and SP-69 (Type# 12).
Ordering: Specify pipe size, material, and figure number.
Notes: 304 and 316 stainless steel are recommended for applications where protection from corrosive environments is needed.

PIPE SIZE	PIPE OD	SCREW	A	B	C	D	WGT EACH (lbs)	MAX REC LOAD (lbs)
3/8	0.675	10-24	3/8-16	1 1/16	1 13/16	1 3/16	0.084	180
1/2	0.840	10-24	3/8-16	3/4	2 1/8	1 3/16	0.098	180
3/4	1.050	10-24	3/8-16	7/8	2 1/2	1 9/16	0.112	180
1	1.315	10-24	3/8-16	1 1/8	2 3/4	2	0.147	180
1 1/4	1.660	10-24	3/8-16	1 5/16	3 3/16	2 3/8	0.181	180
1 1/2	1.900	10-24	3/8-16	1 7/16	3 3/8	2 5/8	0.214	180
2	2.375	10-24	3/8-16	1 5/8	3 15/16	3 1/16	0.300	180
2 1/2	2.875	1/4	1/2-13	2 1/8	5 3/16	3 13/16	0.580	300
3	3.500	1/4	1/2-13	2 1/2	5 11/16	4 5/8	0.720	300
4	4.500	1/4	1/2-13	2 7/8	6 3/4	5 9/16	1.020	300

**FIG. 47
EYE SOCKET**



- Material:** Malleable iron.
Finish: Plain, electro-galvanized, copper plated.
Service: Designed for attaching hanger rod to various types of hangers.
Approvals: Complies with Federal Specification WWH-171E (Type# 16), A-A-1192A (Type# 16), Manufacturers' Standardization Society SP-58 and MSS SP-69 (Type# 16).
Ordering: Specify rod size, figure number and finish.

SIZE A	PIPE SIZE	B	C	D	E	WGT EACH (lbs)	MAX REC LOAD (lbs)
1/4-20	3/8	1/4	1 3/8	7/8	1 1/8	0.05	230
3/8-16	1/2 to 2	1/4	1 9/16	1 1/8	1 1/4	0.07	610
1/2-13	2 1/2 to 3 1/2	1/4	1 7/8	1 1/4	1 1/2	0.14	1000
5/8-11	4 to 5	3/8	2 1/4	1 9/16	1 3/4	0.22	1400
3/4-10	6	1/2	2 7/16	1 7/8	2 1/16	0.32	2200
7/8-9	8	1/2	2 3/4	1 1/8	2 5/16	0.53	2300