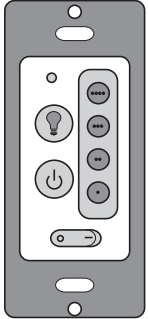
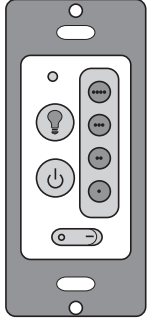


READ AND SAVE THESE INSTRUCTIONS

 <p>Model Number SW405</p> <ul style="list-style-type: none">• 4-Speed Hard Wired Wall Control• Supplied with Receiver• Supplied with White, Ivory, and Light Almond Face Plates• Includes Light Dimming Selection Switch	 <p>Model Number SW406</p> <ul style="list-style-type: none">• 4-Speed Hard Wired Wall Control• Single Light• Supplied with White, Ivory, and Light Almond Face Plates• Use with SW405 (3-way) or SR400• Includes Light Dimming Selection Switch
--	--



EMERSON™ Ceiling Fan/Light Wall Control Owner's Manual

Safety Instructions

WARNING: To avoid fire, shock, and serious personal injury, follow all instructions carefully.

1. Read your Owner's Manual carefully before installing the Wall Control. Retain Owner's Manual for future reference.
2. Before servicing or cleaning the ceiling fan, switch power off at service panel and lock service panel disconnecting means to prevent power from being switched on accidentally. When the service disconnecting means cannot be locked, securely fasten a warning device such as a tag, to the service panel.

ADDITIONAL SAFETY INSTRUCTIONS FOR INSTALLATION

1. To avoid possible electrical shock, be sure electricity is turned off at the main fuse or circuit breaker box before wiring.
2. Make certain no bare wires are exposed outside the wire connectors.
3. All wiring must conform to National and Local Electrical Codes.
4. Follow the recommended instructions for the proper method of wiring your new Wall Control. If you feel you do not have enough electrical wiring knowledge or experience, have your Wall Control installed by a licensed electrician. Any electrical work not described in this manual should be performed by a licensed electrician.



Air Comfort Products
DIVISION OF EMERSON COMPANY
8100 W. Florissant • St. Louis, MO 63136

General

Your Emerson Ceiling Fan/Light Wall Control consists of a wall mount transmitter and a receiver which is mounted under the fan ceiling cover. The wall control is designed to separately control your ceiling fan speed and light intensity.

Code switches in the wall control may be set in 32 different positions. If your fan and light go on and off without using your control, you may be getting interference from other wall units such as garage door openers, car alarms or security systems. To remedy this situation, simply change the combination code in your wall control and receiver. (See Figure 1.)

Setting Operating Frequency of Wall Control (Figure 1)

Your wall control has code switches which must be set in one of 32 possible code combinations. The five levers (numbered 1, 2, 3, 4, and 5) on the switches are factory-set in the ON (up) position. Change the switch settings as follows:

1. Slide the five switch levers in the wall control to your choice of ON (up) or down positions. Use a ball-point pen or small screwdriver and slide the levers firmly up or down.
2. When the power is restored after installation, push and hold the fan off button (⏻) for 3 to 5 seconds to set the code in the receiver.
3. The sixth switch marked ON and I is for dimming control of lights: Set switch to ON to allow for dimming of the lights. Set switch to I for no dimming of the lights such as for fluorescent bulbs.

ON - Dim: Incandescent and Halogen Bulbs
I - No Dim: Fluorescent and LED Bulbs

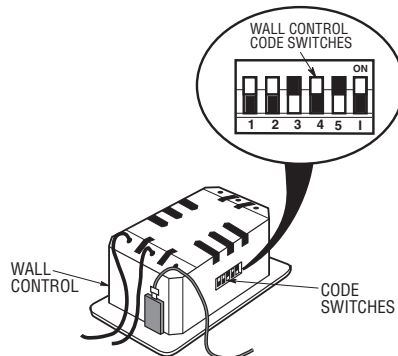


Figure 1

Installation of Wall Control

SINGLE-POLE INSTALLATION (Figure 2)

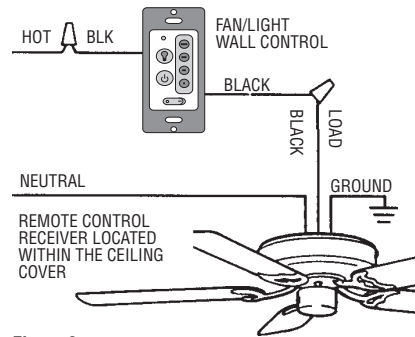


Figure 2

1. Disconnect power at circuit breaker or remove fuse.
2. Remove faceplate and screws from existing wall control. Pull control out from the wall box. Determine the "hot" wire and the "load" wire and disconnect these wires from control. Do not attempt to disconnect any wires not already connected to existing control.
3. Before installing wall control, place wall control in "OFF" mode by pushing "ON/OFF" switch to the "OFF" position.



4. Connect one black wire of wall control to the "hot" wire. Securely connect wires with wire connectors supplied (Figure 3).
5. Screw wall control into wall box using the supplied screws. Leave wall control in "OFF" mode until fan installation is completed.
6. The wall control is supplied with a white, ivory, and almond color switch covers. Choose the finish that best suits your needs and snap the cover onto the wall control (Figure 3).
7. Install decorator wall plate (purchased separately) using the two screws provided with wall plate. Leave wall control in "OFF" mode until fan installation is completed (Figure 3).
8. Refer to fan Owner's Manual to complete this installation.

LIMITED WARRANTY

What The Warranty Covers:

All products covered by this Owner's Manual are warranted against all defects in workmanship and materials. You must be the original purchaser or user of the product to be covered.

What The Period Of Coverage Is:

All components are covered by this warranty for one year from the date you purchased your wall control. ANY IMPLIED WARRANTY OF MERCHANTABILITY OR FITNESS FOR A PARTICULAR PURPOSE, MADE WITH RESPECT TO COMPONENTS AND ACCESSORIES IS ALSO LIMITED TO ONE YEAR.

What Will Emerson Company Do To Correct Problems:

Emerson Company will replace a defective Emerson Wall Control at no charge to you. We will ship the repaired product or replacement to you at no charge, but you are responsible for all costs or removal, reinstallation and shipping of the product to Emerson.

How Can You Get Service:

YOU MUST HAVE PROOF OF YOUR PURCHASE OF THE WALL CONTROL TO OBTAIN LIMITED WARRANTY SERVICE. KEEP YOUR RECEIPT OR OTHER PROOF OF PURCHASE. You can return the product to our factory or to your nearest authorized service center.

- To return the product to the factory, obtain a return authorization and service identification tag by writing to Air Comfort Products, Division of Emerson Company, 8100 W. Florissant Ave., St. Louis, MO 63136. Include all model numbers shown on the product with your request.
- To return the product to an authorized service center, call 1-800-654-3545 for the address of the nearest authorized service center.

You will be responsible for all insurance, freight or other transportation charges to our factory or authorized service center. Your Emerson Wall Control should be properly packed to avoid damage in transit since we will not be responsible for any such damage.

What Is Not Covered:

This warranty also does not cover any defects, malfunctions or failures caused by:

- Repairs by persons not authorized by Emerson Company,
- Use of parts or accessories not authorized by Emerson Company,
- Mishandling, improper installation, modifications or damage to your wall control while in your possession, or
- Unreasonable use, misuse, abuse, including failing to do reasonable and necessary maintenance, and normal wear and tear.

Additionally, this warranty and any implied warranty of merchantability or fitness for a particular purpose are voided when:

- The original purchaser or user ceases to own the product, or
- The ceiling fan is moved from its original point of installation.

This warranty is only valid within the 50 states of the United States and the District of Columbia. No other written or oral warranties apply, and no employee, agent, dealer or other person is authorized to give any warranties on behalf of Emerson Company.

REPAIR, REPLACEMENT OR A REFUND ARE THE EXCLUSIVE REMEDIES AVAILABLE UNDER THIS WARRANTY AND EMERSON IS NOT RESPONSIBLE FOR DAMAGES OF ANY KIND, INCLUDING INCIDENTAL AND CONSEQUENTIAL DAMAGES. Incidental damages include but are not limited to such damages as loss of time and loss of use. Consequential damages include but are not limited to the cost of repairing or replacing other property which was damaged if this product does not work properly.

How State Law Relates To The Warranty:

Some states do not allow the exclusion or limitation of incidental or consequential damages so the above exclusion or limitation may not apply to you. This warranty gives you specific legal rights, and you may also have other rights which vary from state to state.

NOTES

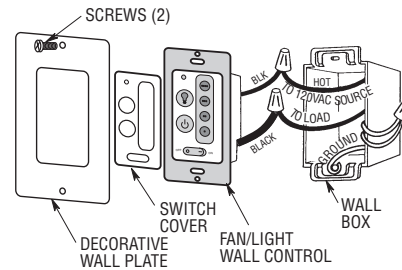


Figure 3

3-WAY INSTALLATION

(On fan controlled by two different wall controls) (See Figures 4 and 5.)

1. Disconnect power at circuit breaker or remove fuse.
2. At all wall box locations remove faceplates and screws from existing controls. Pull controls out from wall boxes and determine which wall box contains the "hot" lead and which wall box contains the "load" wire. Also, identify traveler wires which are common to both wall boxes. Disconnect wires from existing controls only. Do not attempt to disconnect any wires not already connected to existing controls.
3. Before installing wall control, place wall control in "OFF" mode by pushing "ON/OFF" switch to the "OFF" position.

⚠ WARNING

Do not connect any neutral (white) wire to this control. Incorrect wiring will damage this control.

4. Install a wall control in the wall box containing the "hot" wire first. Connect the black wire of the wall control to the "hot" wire. Securely connect wires with wire connectors supplied.
5. Connect one black wire of the wall control to both remaining traveler wires in the wall box and secure with wire connector supplied.

NOTE: Retrofit 3-way installations are likely to include two traveler wires between the two wall boxes. In new construction, only one traveler wire is required.

3-WAY WIRING DIAGRAM: NEW CONSTRUCTION

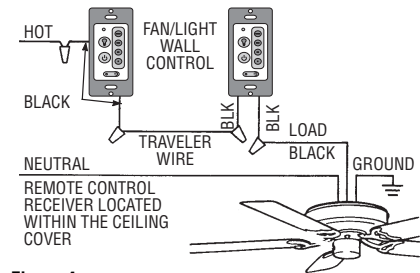
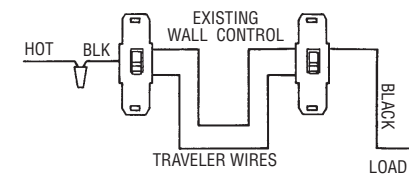


Figure 4

6. Place wall control into wall box. Screw in place and install decorator style faceplate (included).
7. Next, install the other wall control into the wall box containing the load wire. Connect the black wire of the wall control to the traveler wire(s) already connected to the black wire (in the other wall box). Secure with wire connectors supplied.
8. Connect one black wire of the wall control to the "load" (black) wire and secure with wire connector supplied.
9. Place the second wall control into the wall box. Screw in place and install decorator style faceplate (included). Leave switch in "OFF" mode until fan installation is completed.
10. Refer to fan Owner's Manual to complete this installation.

STANDARD WIRING FOR EXISTING 3-WAY CONTROLS



3-WAY WIRING DIAGRAM: RETROFIT

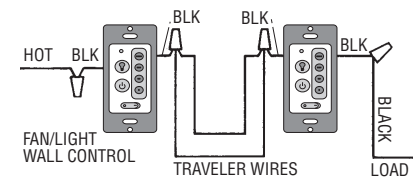


Figure 5

Installation of Receiver (Figure 6)

⚠ WARNING

To avoid possible electrical shock, be sure electricity is turned off at the main fuse or circuit breaker box before installing the receiver.

1. After electricity has been turned off at main fuse box or circuit breaker box, remove the ceiling cover from the hanger bracket.
2. Disconnect the supply wiring to the fan by removing wire connectors. Do not disconnect the green/bare ground wires.
3. Connect the black supply wire to the receiver black wire (AC IN L). Connect the white supply wire to the receiver white wire (AC IN N). Use only listed wire connectors (supplied) to make connections.

4. Connect the receiver white wire (TO MOTOR N) to the fan white wire. Connect the receiver red wire (TO MOTOR L) to the fan black wire. Connect the receiver blue wire (FOR LIGHT) to the fan blue wire.

CAUTION: If no light exist on your ceiling fan, cap the blue wire on the receiver with a wire connector.

5. Push the connected wires up into the junction box and position the receiver in the hanger bracket above the hanger ball. Lay the antenna wire on top of the receiver.
6. Reinstall the ceiling cover and restore electrical power to the circuit.

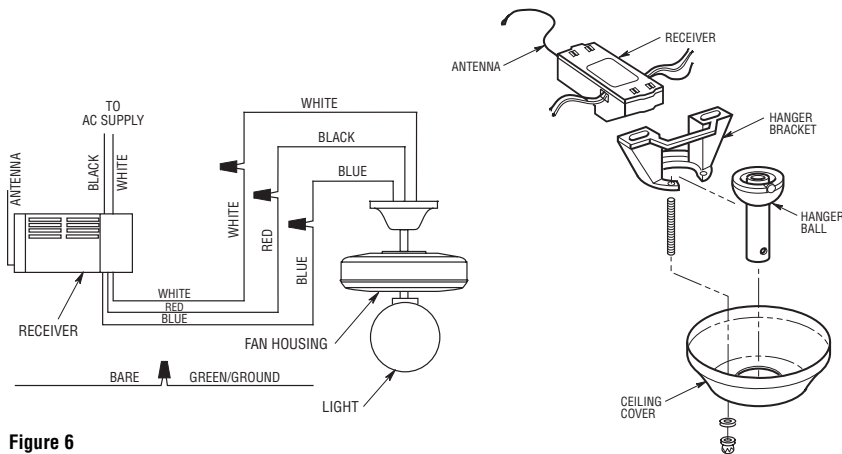


Figure 6

Operation of Your Wall Control (Figure 7)

IMPORTANT

Fan installation must be completed, including the installation of the fan blades, before testing the remote control.

Your wall control has full control of your fan and light.

NOTE: Prior to operation of the fan and light from the wall control, set the fan speed to HIGH (----) and turn the light ON (Ⓛ).

1. To set the desired fan speed, press one of the four buttons (·, ··, ···, ----) to operate your fan on from low to high speeds.
2. To turn the light on and off, press and release the LIGHT (Ⓛ) button. To set the light intensity, press and hold the LIGHT (Ⓛ) button. The light will turn on at the light intensity previously selected.

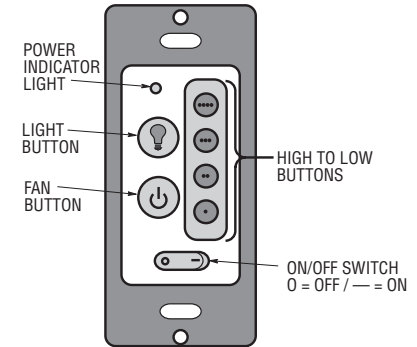


Figure 7

Trouble Shooting

Fan/Light Fails to Operate

- Check that the light switch on the light fixture is on.
- Check that the battery is good (red indicator light should light when any button is pressed).
- Check that the receiver is wired properly.
- Check that code switches in the receiver and the transmitter are set in the same position.
- Check that the ON/OFF wall switch is in the on position (0 = OFF / - = ON).