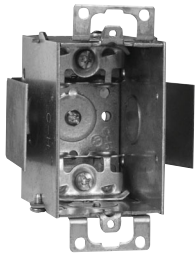


# Steel Switch Boxes

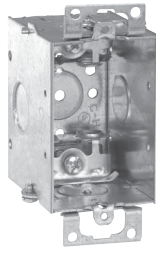
## 2½" DEEP – GANGABLE – 12.5 CUBIC INCH CAPACITY

2" WIDE x 3" LONG FOR ARMoured & METAL-CLAD (MCI) CABLE – CLAMPS IN EACH END

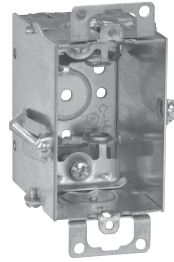
UL LISTED



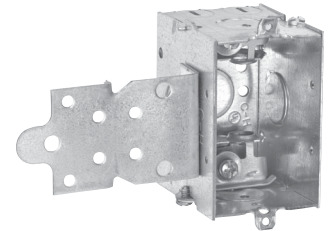
TP177



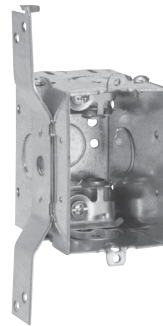
TP178



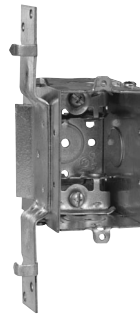
TP179 Hold-Tite



TP180



TP184



TP185

Cat. #	Bracket	Ears	Knockouts			Unit Qty.	Wt. Lbs. Per 100
			Each End	Each Side	Bottom		
TP177*	Snap-in	Yes	2 - Cable	1 - ½"	-	50	74
TP178*	-	Yes	2 - Cable	1 - ½"	1 - ½"	50	63
TP179*	Hold-Tite	Yes	2 - Cable	-	1 - ½"	50	66
TP180*	"F", Set ½"	-	2 - Cable, 1 - ½"	1 - ½"	1 - ½"	50	72
TP184*	"S", Set ⅝"	-	2 - Cable, 1 - ½"	1 - ½"	1 - ½"	50	70
TP185*	"VP", Set ½"	-	2 - Cable, 1 - ½"	1 - ½"	1 - ½"	50	74

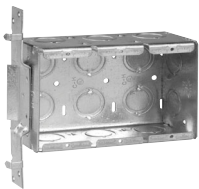
\*UL approved for use with aluminum interlocking grounding metal-clad cable, Type MCIA (Southwire MCAP\*). MCAP\* is a registered trademark of Southwire Company.

Steel Boxes

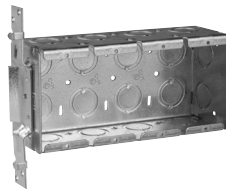
## GANG BOXES SET BACK ½"

2½" DEEP – 3¾" HIGH – ½" & ¾" CONCENTRIC KOs

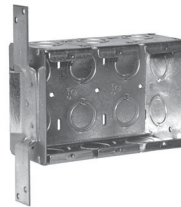
UL LISTED



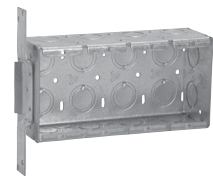
TP632



TP633



TP637



TP638

Cat. #	Gang	Bracket	Width	Knockouts			Capacity Cu. In.	Unit Qty.	Wt. Lbs. Per 100
				Each End	Each Side	Bottom			
TP632	3	VP	5⅞"	2	3	6	46.5	5	143
TP633	4	VP	7⅞"	2	4	8	62.0	5	179
TP637	3	VS	5⅞"	2	3	6	46.5	5	143
TP638	4	VS	7⅞"	2	4	8	62.0	5	179