

GFCI families

Protecting people from electrical shock hazards

ArrowHart's complete offering of ground fault circuit interrupters (GFCIs) is built to meet every need in commercial, industrial and institutional settings, whether permanent or temporary – and is fully compliant with the latest UL943 standards for GFCIs



Hospital specification grade GFCIs

Designed for safety and reliability, Arrow Hart GFCI receptacles meet the strict standards of UL943 (GFCI) and UL498 (hospital grade receptacle standards). Plus, our broad line provides solutions including tamper resistant, ArrowLink modular and NAFTA compliant versions.



Specification grade GFCIs

Arrow Hart GFCI receptacles meet the stringent UL943 (GFCI) standards, plus our broad line provides solutions for commercial, industrial and institutional applications.



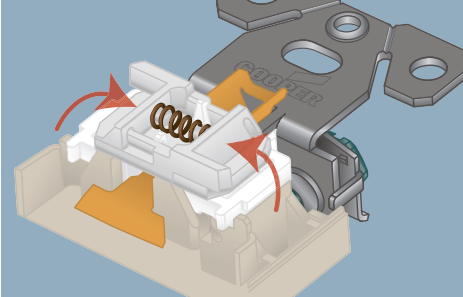
Industrial grade portable GFCIs

Specifically designed to protect personnel and equipment from ground fault hazards in indoor or outdoor job site applications.

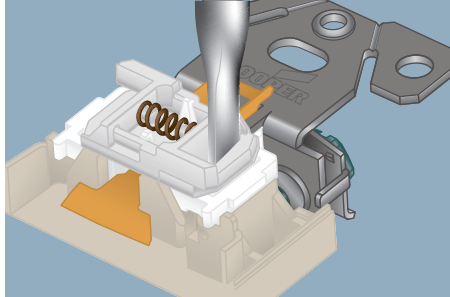


Tamper resistant, weather resistant, and tamper & weather resistant receptacles

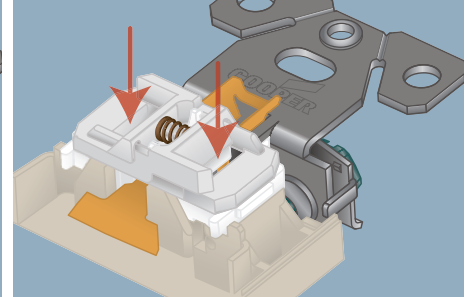
How the tamper resistant system works:



Shutters restrict access in closed position.



Insertion of object in any one side will not open shutters.



Insertion of two-bladed plug or grounding plug will open shutters.



"TR" mold mark provides quick visual confirmation of tamper resistance when installed.



"WR" identifier quickly indicates during inspections that a weather resistant receptacle has been installed.



Both the "TR" mold mark and "WR" identifier are clearly visible in the finished installation, indicating double-layer protection for maximum safety.

A) Commercial locations 2014 NEC

- 406.12 (B) guest rooms & guest suites
- 406.12 (C) child care facilities
- 517.18 (C) pediatric locations

Receptacles located in these areas shall be listed under tamper resistant or employ a listed tamper resistant cover.

B) Dwelling units

2014 NEC - 406.12 (A)

In all areas specified in 210.52 all 125-volt, 15- and 20-amp receptacles shall be listed tamper resistant receptacles.

C) Damp or wet locations

2014 NEC - 406.9

All 15- and 20-amp, 125- and 250-volt non-locking receptacles installed in wet or damp locations shall be weather resistant receptacles.

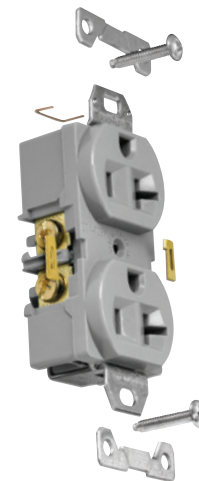
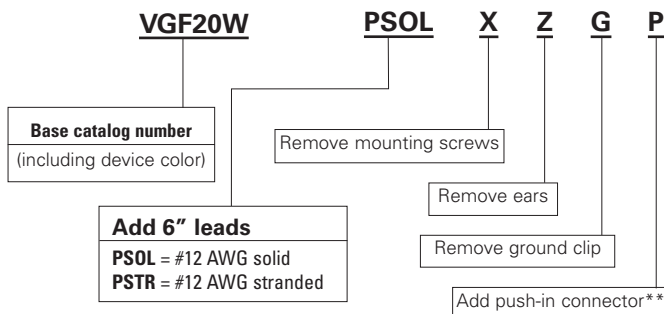
Build-to-spec

For receptacles, switches, GFCIs & TVSS devices

Modified at the factory to improve efficiency and speed production at the job site. Arrow Hart's build-to-spec program provides customized device solutions to simplify your project and maximize your bottom line.

Build-to-spec sample number:
VGF20W

Note:
Arrow Hart 20A 125V NEMA 5-20 white GFCI receptacle, with wire leads and push-in connectors, without mounting screws, ears, or grounding clip.



BUILD-TO-SPEC
CUSTOM CONFIGURED DEVICES

**For use with leaded devices only. Add "PSOL" to back of device catalog number for 6" of #12 AWG solid or "PSTR" for 6" of #12 AWG stranded. (Example: 8300BLSPSOL + build to spec options).

All devices are bulk packed 50 pieces per carton. Minimum order quantity is 100 pieces. Orders under 500 pieces ship within 5 days with larger quantities typically within 10 days.

Compliances, specifications and availability are subject to change without notice.

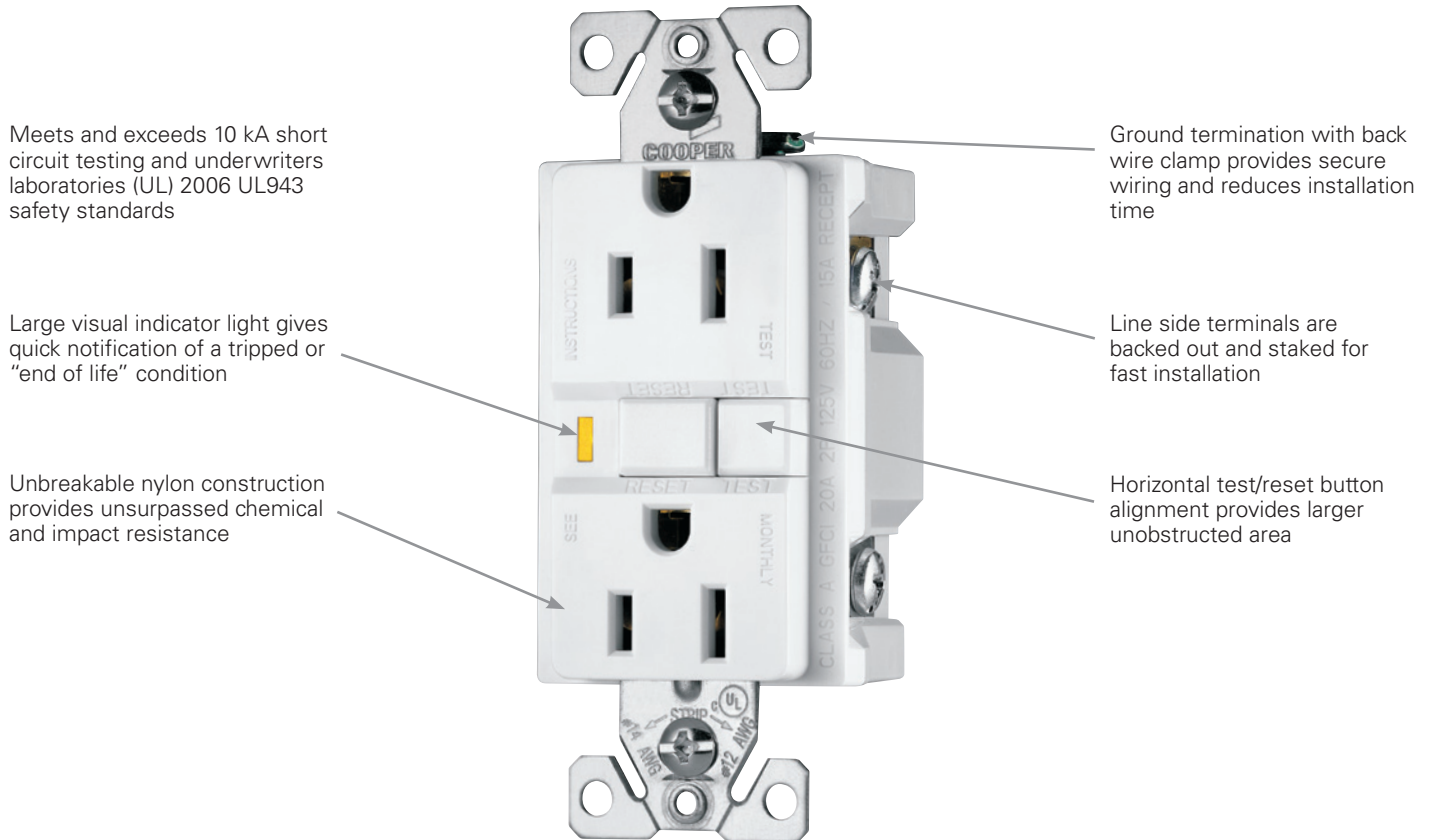
www.eaton.com
www.arrowhart.com

Specification grade GFCIs

ShockSentry GFCIs provide state-of-the-art, dependable electrical shock protection

In addition to being tested to the highest standards to help ensure safety, Arrow Hart GFCIs will deny power and prevent re-setting if the device is no longer able to provide safe, protected power

ShockSentry ground fault circuit interrupter features & benefits



Additional features & benefits

- Tapered back wire openings handle multiple wire sizes and types for applications up to #10 AWG solid or stranded wire
- When downstream receptacles are wired from load side, a 20 amp feed-through rating offers full protection
- Test and reset buttons are color matched to provide superior aesthetics
- Longer, wider “bridge” strap provides 40% more contact area with wallboard, virtually eliminating floating installations
- Exclusive built-in wire stripper provides fast stripping of wire without tools
- Line-load miswiring protection: ShockSentry GFCI's will not provide power downstream when wired incorrectly
- Tri-combo head terminal and mounting screws

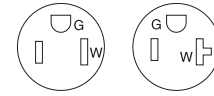
Compliances, specifications and availability are subject to change without notice.

Specification grade GFCIs

Specification grade ground fault circuit interrupter receptacles

Product description

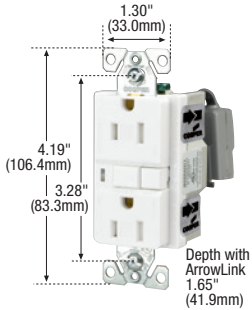
2-pole, 3-wire grounding
15A, 125V/AC; 20A, 125V/AC, NEMA 5-15, 5-20



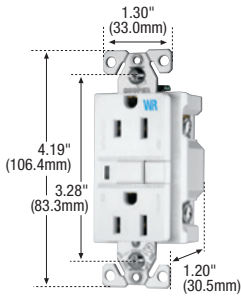
5-15R

5-20R

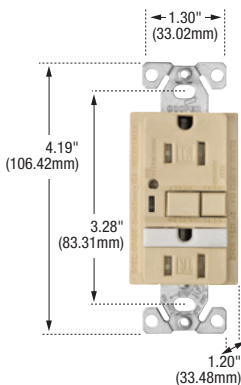
Tamper resistant specification grade GFCIs



TRVGF15_MOD



WRVGF15



TRVGFNL15

Rating	A	V/AC	NEMA	Description	Color suffix	Catalog no.	
15	125	5-15R	Duplex GFCI, back & side wire	A, B, BK, GY, LA, V, W	<input type="checkbox"/> TRVGF15__	• •	
			Duplex GFCI, mid-size wallplate, back & side wire	A, LA, V, W	<input type="checkbox"/> TRVGF15__-M		
			Duplex GFCI, back & side wire	B, BK, GY, LA, RD, V, W	<input type="checkbox"/> TRVGF15F__	• • •	
			Duplex GFCI with nightlight, back & side wire	A, BK, LA, V, W	<input type="checkbox"/> TRVGFNL15__	• •	
20	125	5-20R	Duplex GFCI, back & side wire	A, B, BK, GY, LA, RD, V, W	<input type="checkbox"/> TRVGF20__	• •	
			Duplex GFCI, back & side wire	B, BK, GY, LA, RD, V, W	<input type="checkbox"/> TRVGF20F__	• • •	
			Duplex GFCI with nightlight, back & side wire	A, BK, LA, V, W	<input type="checkbox"/> TRVGFNL20__	• •	

Weather resistant specification grade GFCIs



Rating	A	V/AC	NEMA	Description	Color suffix	Catalog no.	
15	125	5-15R	Duplex GFCI, back & side wire	B, GY, V, W	<input type="checkbox"/> WRVGF15__	• •	
			Duplex GFCI, back & side wire	B, GY, V, W	<input type="checkbox"/> WRVGF15F__	• • •	
20	125	5-20R	Duplex GFCI, back & side wire	B, BK, GY, V, W	<input type="checkbox"/> WRVGF20__	• •	
			Duplex GFCI, back & side wire	B, GY, V, W	<input type="checkbox"/> WRVGF20F__	• • •	

Tamper & weather resistant specification grade GFCIs



Rating	A	V/AC	NEMA	Description	Color suffix	Catalog no.	
15	125	5-15R	Duplex GFCI, back & side wire	B, GY, LA, V, W	<input type="checkbox"/> TWRVGF15__	• •	
			Duplex GFCI, back & side wire	B, GY, LA, V, W	<input type="checkbox"/> TWRVGF15F__	• • •	
20	125	5-20R	Duplex GFCI, back & side wire	B, GY, LA, V, W	<input type="checkbox"/> TWRVGF20__	• •	
			Duplex GFCI, back & side wire	B, GY, LA, V, W	<input type="checkbox"/> TWRVGF20F__	• • •	

Includes standard size unbreakable wallplate unless otherwise noted
Consult factory customer service representative for additional packaging options

Specification grade GFCIs



Rating	A	V/AC	NEMA	Description	Color suffix	Catalog no.	
15	125	5-15R	Duplex GFCI, back & side wire	A, B, BK, GY, LA, V, W	<input type="checkbox"/> VGF15__	• •	
			Duplex GFCI, mid-size wallplate, back & side wire	A, LA, V, W	<input type="checkbox"/> VGF15__-M		
			Duplex GFCI, back & side wire	B, BK, GY, LA, RD, V, W	<input type="checkbox"/> VGF15F__	• • •	
20	125	5-20R	Duplex GFCI, back & side wire	A, B, BK, GY, LA, RD, V, W	<input type="checkbox"/> VGF20__	• •	
			Duplex GFCI, back & side wire	B, BK, GY, LA, RD, V, W	<input type="checkbox"/> VGF20F__	• • •	

Includes standard size unbreakable wallplate unless otherwise noted
Consult factory customer service representative for additional packaging options

Color ordering information:

For ordering devices, include Catalog no. followed by the Color suffix: A (Almond), B (Brown), BK (Black), GY (Gray), LA (Light Almond), RD (Red), V (Ivory), W (White)



Specification information: Specification grade GFCI: H-16, H-17

Compliances and availability are subject to change without notice.

➤ ArrowLink option available. Add "MOD" suffix to standard catalog number (example VGF15W, VGF15WMOD). For ordering information on ArrowLink & ArrowLink SPD connectors, see Page H-4

Build-to-spec customizable devices - Page H-3

Indicates NAFTA compliant - Page Q-30

Tamper resistant

Weather resistant

Tamper & weather resistant

www.eaton.com

www.arrowhart.com

Specification grade GFCIs specification & performance data

Specification grade ground fault circuit interrupter receptacles

Product description

2-pole, 3-wire grounding
15A, 125V/AC; 20A, 125V/AC
NEMA 5-15, 5-20

Device type	Specification grade tamper resistant & weather resistant duplex GFCI 15A & 20A; TRVGF, TRVGF_F, WRVGF, TWRVGF series, TRVGF__-AG	TR TAMPER RESISTANT	WR WEATHER RESISTANT	TWR TAMPER & WEATHER RESISTANT	Specification grade GFCI 15A & 20A VGF and VGF_F series, VGF__-AG
Wiring type	Back & side wire				Back & side wire
Testing & code compliance	<ul style="list-style-type: none"> cULus Listed to UL498 and UL943, file no. E60120 Meets all UL943 (GFCI), UL498 (receptacles) and applicable CSA requirements NOM certified 				<ul style="list-style-type: none"> cULus Listed to UL498 and UL943, file no. E60120 Meets all UL943 (GFCI), UL498 (receptacles) and applicable CSA requirements NOM certified
Environmental specifications	<p>Flammability: Meets UL94 requirements; V2 rated</p> <p>Temperature rating: -35°C to 66°C (-31°F to 150.8°F)</p>				<p>Flammability: Meets UL94 requirements; V2 rated</p> <p>Temperature rating: -35°C to 66°C (-31°F to 150.8°F)</p>
Electrical specifications	<p>Dielectric voltage: Withstands 2000V per UL498</p> <p>Current interrupting: Yes, at full-rated current</p> <p>Temperature rise: max. 30°C (86°F) after 100 cycles of overload @ 150% of rated current (DC)</p> <p>Trip time: 0.025 seconds (Class A)</p> <p>Frequency: 60 Hz; Voltage: 125V; Amperage: 15A/20A 20A feed through</p> <p>Short circuit testing: Meets and exceeds 10 kA</p> <p>Maximum interrupting capacity: 20 Amps</p>				<p>Dielectric voltage: Voltage: withstands 2000V per UL498</p> <p>Current interrupting: Yes, at full-rated current</p> <p>Temperature rise: Max. 30°C (86°F) after 100 cycles of overload @ 150% of rated current (DC)</p> <p>Trip time: 0.025 seconds (Class A)</p> <p>Frequency: 60 Hz; Voltage: 125V; Amperage: 15A/20A 20A feed through</p> <p>Short circuit testing: Meets and exceeds 10 kA</p> <p>Maximum interrupting capacity: 20 Amps</p>
Mechanical specifications	<p>Terminal accommodation: #14 - #10 AWG</p> <p>Voltage ratings: Permanently marked on device</p>				<p>Terminal accommodation: #14 - #10 AWG</p> <p>Voltage ratings: Permanently marked on device</p>
Materials	<p>Top housing: Nylon</p> <p>Bottom housing: PVC</p> <p>Strap: 0.040" thick steel, zinc plated; WR & TWR: nickel-plated</p> <p>Line contacts: 0.030" thick brass</p> <p>Terminal & ground screws: Terminal: brass/nickel-plated steel; WR & TWR brass/nickel-plated stainless steel; Ground: ground screw green on all models, WR and TWR stainless steel</p> <p>Terminal clamps: Brass-plated steel; WR & TWR nickel-plated steel</p>				<p>Top housing: Nylon</p> <p>Bottom housing: PVC</p> <p>Strap: 0.040" thick steel, zinc plated</p> <p>Line contacts: 0.030" thick brass</p> <p>Terminal & ground screws: #8-32 steel, brass plated; neutral screw nickel plated, ground screw green</p> <p>Terminal clamps: 0.070" thick steel</p>

Compliances, specifications and availability are subject to change without notice.

Specification grade GFCIs specification & performance data

Specification grade ground fault circuit interrupters

Product description

2-pole, 3-wire grounding
15A, 125V/AC; 20A, 125V/AC
NEMA 5-15, 5-20

Device type	Specification grade GFCI w/ nightlight, TRVGFNL
Wiring type	Back & side wire
Testing & code compliance	<ul style="list-style-type: none"> cULus Listed to UL498 and UL943, file no. E60120 Meets all UL943 (GFCI), UL498 (receptacles) and applicable CSA requirements
Environmental specifications	Flammability: Meets UL94 requirements; V2 rated Temperature rating: -35°C to 66°C (-31°F to 150.8°F)
Electrical specifications	Dielectric voltage: Voltage: withstands 2000V per UL498 Current interrupting: Yes, at full-rated current Temperature rise: Max. 30°C (86°F) after 100 cycles of overload @ 150% of rated current (DC) Trip time: 0.025 seconds (Class A) Frequency: 60 Hz; Voltage: 125V; Amperage: 15A/20A 20A feed through Short circuit testing: Meets and exceeds 10 kA Maximum interrupting capacity: 20 Amps
Mechanical specifications	Base device terminal accommodation: #14 - #10 AWG Voltage ratings: Permanently marked on device
Materials	Top housing: Thermoplastic, nylon Lens: Thermoplastic, PC Bottom housing: Polycarbonate Strap: 0.047" thick steel, zinc plated Line contacts: 0.030" thick brass Terminal & ground screws: #8-32 steel, brass plated; neutral screw #8-32 steel, zinc plated, ground screw green Illumination: 4 LED's, 140 Max lumens output, 1Fc @ 0.9 ft. 50,000 hours lamp life

Specification grade ground fault circuit interrupters

Product description

2-pole, 3-wire grounding
Combo: 15A, 125V/AC receptacle: 15A, 120V/AC switch
Dead front: 20A, 125V/AC

Device type	Specification grade combination GFCI Receptacle & switch, 15A: VGFS15, ___-MSP	Specification grade blank face (dead-front) GFCI, 20A: VGFD20 series
Wiring type	Back & side wire	Back & side wire
Testing & code compliance	<ul style="list-style-type: none"> cULus Listed to UL498 and UL943, file no. E60120 Meets all UL943 (GFCI), UL498 (receptacles), UL20 (switch) and applicable CSA requirements NOM certified 	<ul style="list-style-type: none"> cULus Listed to UL498 and UL943, file no. E60120 Meets all UL943 (GFCI), UL498 (receptacles), UL508 (motor control) and applicable CSA requirements NOM certified
Environmental specifications	Flammability: Meets UL94 requirements; V2 rated Temperature rating: -35°C to 66°C (-40°F to 150.8°F)	Flammability: Meets UL94 requirements; V2 rated Temperature rating: -35°C to 66°C (-40°F to 150.8°F)
Electrical specifications	Dielectric voltage: Withstands 2000V per UL498 Current interrupting: Yes, at full-rated current Temperature rise: Max. 30°C (86°F) after 100 cycles of overload @ 150% of rated current (DC) Short circuit testing: Meets and exceeds 10 kA	Dielectric voltage: Withstands 2000V per UL498 Current interrupting: Yes, at full-rated current Temperature rise: N/A Short circuit testing: Meets and exceeds 10 kA
Mechanical specifications	Terminal accommodation: #14 - #10 AWG Voltage ratings: Permanently marked on device Horsepower ratings: Switch rated for motor loads per UL20: 15A: @ 120V/AC = 1/2 HP, max. amps: 12 full-load amps	Terminal accommodation: #14 - #10 AWG Voltage ratings: Permanently marked on device Horsepower ratings: Rated for motor loads per UL508: 20A: @ 125V/AC = 1.5 HP, max. amps 20 full load amps
Materials	Top housing: Nylon Bottom housing: PVC Strap: 0.040" thick steel, zinc plated Line contacts: 0.030" thick brass Terminal & ground screws: #8-32 steel, brass plated; neutral screw nickel plated, ground screw green Terminal clamps: 0.070" thick steel	Top housing: Nylon Bottom housing: PVC Strap: 0.040" thick steel, zinc plated Line contacts: N/A Terminal & ground screws: #8-32 steel, brass plated; neutral screw nickel plated, ground screw green Terminal clamps: 0.070" thick steel

Compliances, specifications and availability are subject to change without notice.