

Plug and connector families

Straight blade plugs & connectors for any application

Arrow Hart's extensive offering of straight blade plugs and connectors cover the full range of hospital, industrial and commercial specification grades for applications where quality and durability are critical



Hospital specification grade plugs & connectors

Built to meet and exceed UL federal specification and hospital grade testing, Arrow Hart's hospital grade plugs and connectors assure reliable performance in the most demanding healthcare applications.



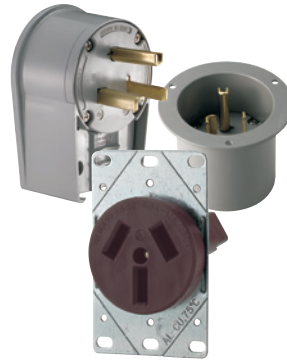
Industrial specification grade plugs, connectors, flanged inlet & flanged outlets

With a variety of styles including safety grip, auto grip and quick grip, these devices are designed to install quickly and easily and provide reliable performance in tough industrial environments.



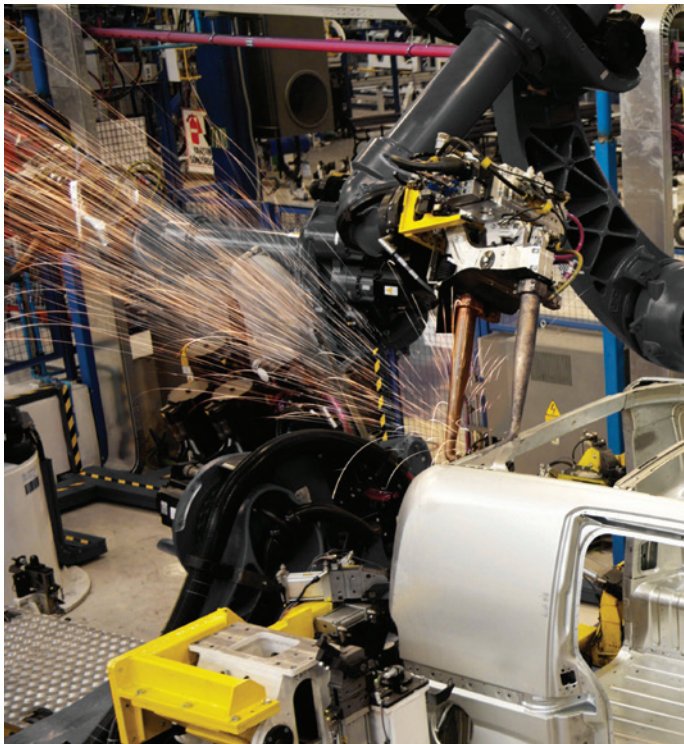
Commercial specification grade straight blade plugs & connectors

Designed for light commercial applications, where ease-of-use, value and quality are critical.



Specification grade straight blade power devices

Heavy duty design and construction make Arrow Hart power devices ideal for any high amperage industrial or commercial power connectivity application.



Commercial grade straight blade plugs & connectors

Product description

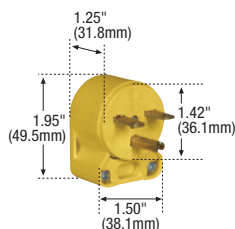
2-pole, 3-wire grounding
20A, 125V/AC
NEMA 5-20



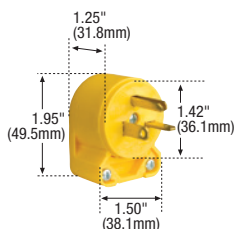
5-20P



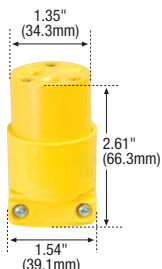
5-20R



4866AN



4509AN



4229

Commercial grade plugs & connectors



Rating A	V/AC	NEMA	Description	Cord diameter	Color	Plug catalog no.	Connector catalog no.		
20	125	5-20	Vinyl straight body	0.25-0.66" (6.3-16.6mm)	Y	□ 4409	□ 4228	•	•
			Vinyl angled body	0.25-0.66" (6.3-16.6mm)	Y	□ 4409AN*	—	•	•

* Not CSA cert

Commercial grade straight blade plugs & connectors

Product description

2-pole, 2-wire grounding
15A, 250V/AC
NEMA 6-15



6-15P



6-15R

Commercial grade plugs & connectors



Rating A	V/AC	NEMA	Description	Cord diameter	Color	Plug catalog no.	Connector catalog no.		
15	250	6-15	Vinyl straight body	0.25-0.66" (6.3-16.6mm)	Y	—	□ 4227	•	•
			Vinyl angled body	0.25-0.66" (6.3-16.6mm)	Y	□ 4866AN*	—	•	•

* Not CSA cert

Commercial grade straight blade plugs & connectors

Product description

2-pole, 2-wire grounding
20A, 250V/AC
NEMA 6-20



6-20P



6-20R

Commercial grade plugs & connectors



Rating A	V/AC	Vinyl NEMA	Description	Cord diameter	Color	Plug catalog no.	Connector catalog no.		
20	250	6-20	Vinyl straight body	0.25-0.66" (6.3-16.6mm)	Y	□ 4509	□ 4229 [†]	•	•
			Vinyl angled body	0.25-0.66" (6.3-16.6mm)	Y	□ 4509AN*	—	•	•

[†] Not NOM cert, * Not CSA cert

Color information:

Y (Yellow)



(Yellow)

Commercial grade dimensional
Information: B-15

Specification information:
Commercial grade plugs &
connectors: B-24

Compliances, specifications and availability are subject to change without notice.

Indicates NAFTA compliant - Page Q-30

RoHS compliant - Page Q-30

Straight blade flanged inlets & flanged outlets dimensional data

Nylon shell flanged inlets



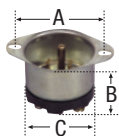
Family	A	B	C
Industrial grade	2.56" (65.0mm)	1.84" (46.7mm)	1.71" (43.4mm)

Nylon shell flanged outlets



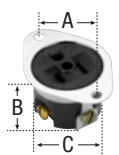
Family	A	B	C
Industrial grade	2.56" (65.0mm)	1.84" (46.7mm)	1.71" (43.4mm)

Metal shell flanged inlets



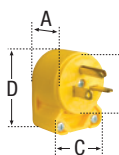
Family	A	B	C
Industrial grade	2.00" (50.8mm)	1.43" (36.3mm)	1.62" (41.1mm)

Metal shell flanged outlets

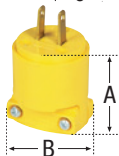


Family	A	B	C
Industrial grade	2.06" (52.3mm)	1.50" (38.1mm)	1.09" (27.7mm)

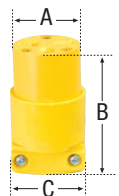
Commercial plugs



Family	A	B	C	D	Cord diameter
Commercial grade	1.65" (41.9mm)	1.54" (39.1mm)	—	—	0.25-0.66" (6.4-16.6mm)
Commercial grade angled	1.25" (31.8mm)	1.42" (36.1mm)	1.50" (38.1mm)	1.95" (49.5mm)	0.25-0.66" (6.4-16.6mm)



Commercial connectors

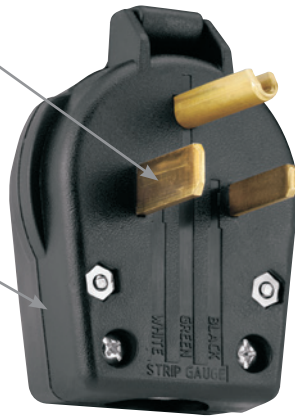


Family	A	B	C	Cord diameter
Commercial grade	1.35" (34.3mm)	2.61" (66.3mm)	1.54" (39.1mm)	0.25-0.66" (6.4-16.6mm)

Commercial straight blade power devices features & benefits

Universal plugs include blades for both 30A and 50A configurations of the same voltage

Terminals have pressure plates to protect wires



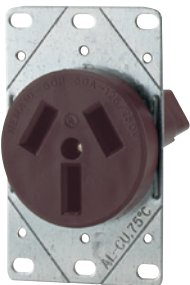
Plug

Patented lay-in terminals accept up to #4 AWG wire

Back features concentric knockouts and an adjustable cord clamp to allow wiring from back or bottom



Surface receptacle



Flush receptacles feature heavy gauge galvanized steel mounting strap and glass-reinforced nylon body



Broad selection of wallplates available for flush receptacle mounting



Surface receptacles can be wired for back or bottom wiring



Variety of 30A, 50A and 60A configurations available

Compliances, specifications and availability are subject to change without notice.

www.eaton.com
www.arrowhart.com

Industrial & commercial grade straight blade devices specification & performance data

Commercial grade plugs & connectors

Product description

2-pole, 2-wire non-grounding; 2-pole, 3-wire grounding
15A, 125V/AC; 15A, 250V/AC; 20A, 125V/AC; 20A, 250V/AC
NEMA 1-15, 5-15, 5-20, 6-15, 6-20

Device type	Commercial grade vinyl plugs & connectors, straight blade
Wiring type	Back wire
Testing & code compliance	<ul style="list-style-type: none"> Listed to UL498, file no. E15012 CSA certified to C22.2, no. 42-99 file no. 2081 (6221-02) NOM certified, except 4882, 4862ANW
Environmental specifications	<p>Flammability: Meets UL94 requirements, V2 rated</p> <p>Temperature rating: -20°C to 60°C (-4°F to 140°F)</p>
Electrical specifications	<p>Dielectric voltage: Twice the device rating + 1000V per UL498</p> <p>Current interrupting: Yes, at full-rated current</p> <p>Temperature rise: Max. 30°C (86°F) after 50 cycles of overload @ 150% of rated current (DC)</p>
Specifications mechanical	<p>Terminal accommodation: #18 - #12 AWG</p> <p>Voltage ratings: Permanently marked on device</p>
Materials	<p>Plug/connector outer shell: Polypropylene</p> <p>Interior body: Polypropylene, except 4220, 4880 series: vinyl</p> <p>Terminal retainer: Polypropylene</p> <p>Blades: 0.058" thick brass</p> <p>Line contacts: 0.030" thick brass</p> <p>Terminal clamps: Steel, zinc plated</p> <p>Terminal screws: #6-40 steel, brass plated (hot) and zinc plated (neutral)</p> <p>Ground screw: #6-40 steel, zinc plated, green</p> <p>Assembly screws: Steel, zinc plated</p> <p>Cord clamp screws: Steel, zinc plated</p> <p>Cord clamp: Polypropylene</p>