

Industrial straight blade power devices features & benefits

Rugged high-strength thermoplastic construction

Neoprene gasket seals around cord for added terminal protection from external elements



Plug

Unique internal clamp design secures cord during assembly, reducing installation time



Connector

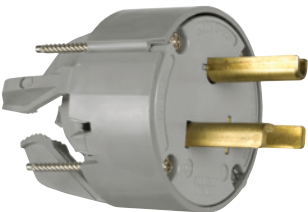
Tapered cord grip cover reduces cord snags



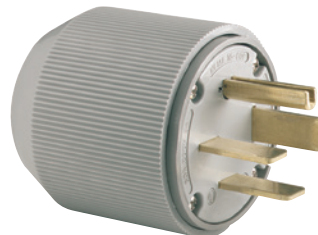
Angled plug versions have 4 possible positions for maximum convenience



Broad selection of flanged inlets accept #12 AWG to #4 AWG conductors



Quick-drive stainless steel assembly screws provide corrosion resistance and speed installation time



Variety of 30A, 50A and 60A configurations available

Straight blade power devices 20, 30, 50 & 60A



Rating: Amps V/AC	Receptacle/ plug NEMA configuration	Flush receptacle	Wallplate	Surface receptacle	Panel mount receptacle	Plugs	Angle plugs	Connectors	Flanged inlets	Adapters
-------------------------	---	---------------------	-----------	-----------------------	---------------------------	-------	-------------	------------	-------------------	----------

2-pole, 3-wire grounding

30A 125V	5-30R 5-30P	Commercial: 1233 (Brown) Industrial: 5716N (Black)	Standard size: 39CH, 68, 2068, 2168, 93221, 93227 Mid-size: 5068, PJ703, PJ724			Industrial: 5717N (Gray)	Commercial: S41 (Black) Industrial: 5717AN (Gray)	Industrial: 6716N (Gray & Black)	Industrial: 5717NFI (Gray)		
30A 125V	TT-30R TT-30P	Commercial: 1263 (Black)			Commercial: U1263 (Black)			Commercial: 83 (Black)			Commercial: 1264 (Plug to NEMA 5-15R or 5-20R) (Black)
30A 250V	6-30R 6-30P	Commercial: 1234 (Black) Industrial: 5700N (Black)			Commercial: 1232 (Black)		Industrial: 5701N (Gray)	Commercial: S42 (Black) Industrial: 5701AN (Gray)	Industrial: 6700N (Gray & Black)	Industrial: 5701NFI (Gray)	
30A 277V	7-30R 7-30P	Industrial: 5795N (Black)					Industrial: 5703N (Gray)	Industrial: 5703AN (Gray)	Industrial: 6795N (Gray & Black)	Industrial: 5703NFI (Gray)	
50A 125V	5-50R 5-50P	Commercial: 1253 (Black)			Commercial: 1251 (Black)		Industrial: 5712N (Gray)	Commercial: S41 (Black) Industrial: 5712AN (Gray)	Industrial: 6711N (Gray & Black)	Industrial: 5712NFI (Gray)	
50A 250V	6-50R 6-50P	Commercial: 1254 (Black) Industrial: 5709N (Black)			Commercial: 1252 (Black)		Industrial: 5710N (Gray)	Commercial: S42 (Black) Industrial: 5710AN (Gray)	Industrial: 6709N (Gray & Black)	Industrial: 5710NFI (Gray)	
50A 277V	7-50R 7-50P						Industrial: 5705N (Gray)	Industrial: 5705AN (Gray)	Industrial: 6796N (Gray & Black)	Industrial: 5705NFI (Gray)	

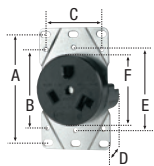
3-pole, 3-wire non-grounding

20A 125/250V	10-20R 10-20P	Commercial: 805 (Ivory)				Industrial: 9151N (Gray) Commercial: 2836 (Armed PVC) (Yellow)				
30A 125/250V Dryer	10-30R 10-30P	Commercial: 38B (Brown)	Standard size: 39CH, 68, 2068, 2168, 93221, 93227	Commercial: 125 (Black)		Industrial: 9337N (Gray)	Commercial: S80 (Black) Industrial: 9352AN (Gray)	Industrial: 9341N (Gray & Black)	Industrial: 9337NFI (Gray)	
50A 125/250V Range	10-50R 10-50P	Commercial: 32B (Brown) Industrial: 7985N (Black)	Mid-size: 5068, PJ703, PJ724 Standard size: 192	Commercial: 112 (Black)		Industrial: 4524N (Gray)	Commercial: S80 (Black) Industrial: 7952AN (Gray)	Industrial: 4526N (Gray & Black)	Industrial: 4524NFI (Gray)	

Power device dimensional information: B-20; Specification information: B-25-B-27
Compliances, specifications and availability are subject to change without notice.

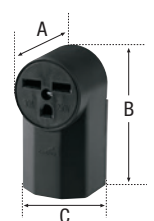
✓ All products on this page are RoHS compliant – Page Q-30

Flush receptacles



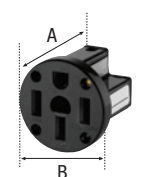
Family	A	B	C	D (Depth)	E	F (Face dia.)
30 & 1200 series	3.28" (83.3mm)	2.38" (60.5mm)	1.81" (46.0mm)	1.42" (36.1mm)	2.50" (63.5mm)	2.10" (53.5mm)
5000 & 7000 series	3.28" (83.3mm)	2.38" (60.5mm)	1.81" (46.0mm)	1.69" (42.9mm)	2.50" (63.5mm)	2.12" (53.8mm)
8000 series	3.28" (83.3mm)	2.38" (60.5mm)	1.81" (46.0mm)	1.69" (42.9mm)	—	2.38" (60.5mm)

Surface receptacles



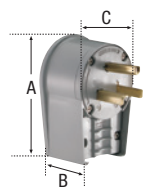
Family	A	B	C
100 & 1200 series	2.10" (53.3mm)	4.75" (120.7mm)	2.50" (63.5mm)

Panel mount receptacles



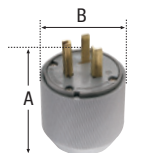
Family	A	B
58, 60	2.80" (71.1mm)	2.80" (71.1mm)
U1263	1.69" (42.9mm)	2.09" (53.1mm)

Angled plugs



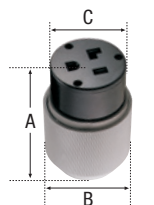
Family	A	B	C	Cord diameter
80 & 83	2.92" (74.2mm)	1.03" (26.2mm)	2.80" (71.1mm)	83: 0.64" (16.3mm) max. 80: 0.80" (20.3mm) max.
S41 & S42, S20 & S21, S19	3.37" (85.6mm)	1.38" (35.1mm)	2.87" (72.9mm)	S41 & S42: 1.10" (27.9mm) S20 & S21: 1.13" (28.7mm) S19: 1.00" (25.4mm)
4500AN, 5700AN, 7900AN, 8300AN, 8400AN, 9300AN, 9400AN, AH8400AN series	4.30" (109.2mm)	1.88" (47.8mm)	3.00" (76.2mm)	0.56-1.31" (14.2-33.3mm)

Plugs



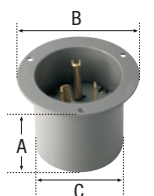
Family	A	B	Cord diameter
4500N, 5500N, 5700N, 8300N, 8400N, 9300N, 9400N, AH8400N series	3.34 - 3.81" (84.8 - 96.8mm) varies with diameter of cord	3.12" (79.2mm)	0.43 - 1.31" (10.8 - 33.3mm)

Connectors



Family	A	B	C	Cord diameter
6700N, 9300N, 9500N series	4.71-5.19" (119.6-131.8mm) varies with diameter of cord	3.12" (79.2mm)	2.59" (65.8mm)	0.43-1.31" (10.8 - 33.3mm)

Flanged inlets



Family	A	B	C
4500NFI, 5700NFI, 9300NFI series	2.72" (69.1mm)	3.75" (95.3mm)	2.81" (71.4mm)

Compliances, specifications and availability are subject to change without notice.

Commercial grade power devices

Product description

2-pole, 3-wire grounding: 30A, 125V/AC, NEMA TT-30
 3-pole, 3-wire non-grounding: 20A, 125/250V/AC, NEMA 10-20
 3-pole, 4-wire grounding: 20A, 125/250V/AC, NEMA 14-20

Device type	Commercial power plugs, straight blade NEMA 10-20, Cat. no. 2836	Commercial power flush receptacles, straight blade NEMA 10-20, Cat. no. 805	Commercial power NEMA TT-30 plug & adapter, straight blade Cat. nos. 83, 1264
Wiring type	Back wire	Side wire	Back wire
Testing & code compliance	<ul style="list-style-type: none"> Listed to UL498 file no. E15012 NOM certified 	<ul style="list-style-type: none"> Listed to UL498 file no. E15058 CSA certified to C22.2 no. 42-M1999, file no. 6914 (6233-01) NOM certified 	<ul style="list-style-type: none"> Listed to UL498 file no. E15012 NOM certified
Environmental Specifications	Flammability: Withstands 1500V per UL498 Temperature rating: Yes, at full-rated current	Flammability: Withstands 1500V per UL498 Temperature rating: Yes, at full-rated current	Flammability: Withstands 1500V per UL498 Temperature rating: -20°C to 75°C (-4°F to 167°F)
Electrical specifications	Dielectric voltage: Twice the device rating + 1000V per UL498 Current interrupting: Yes, at full-rated current Temperature rise: Max. 30°C (86°F) after 100 cycles of overload @ 150% of rated current (DC)	Dielectric voltage: ≤300V: 2000V, 301-600V: 3000V per UL498 Current interrupting: Yes, at full-rated current Temperature rise: Max. 30°C (86°F) after 100 cycles of overload @ 150% of rated current (DC)	Dielectric voltage: Twice the device rating + 1000V per UL498 Current interrupting: Yes, at full-rated current Temperature rise: Max. 30°C (86°F) after 100 cycles of overload @ 150% of rated current (DC)
Mechanical specifications	Terminal accommodation: #14 - #10 AWG Voltage ratings: Permanently marked on device	Terminal accommodation: #14 - #10 AWG Voltage ratings: Permanently marked on device	Terminal accommodation: 83: #12 - #10 AWG 1264: N/A Voltage ratings: Permanently marked on device
Materials	Receptacle base: N/A Receptacle face: N/A Receptacle strap: N/A Plug/connector outer shell: Steel, zinc-plated Interior body: PVC Blades: 0.072" thick brass Line contacts: N/A Terminal clamps: Steel, zinc-plated Terminal screws: #6-40 brass Ground contact: N/A Ground screw: N/A Assembly/mounting screws: #5-20 steel, zinc plated Cord clamp insert: PVC Cord clamp screws: #6-32 steel, zinc plated Cord clamp: Steel, zinc plated	Receptacle base: Urea Receptacle face: Urea Receptacle strap: 0.050" thick steel, galvanized Plug/connector outer shell: N/A Interior body: N/A Blades: N/A Line contacts: 0.040" thick brass Terminal clamps: 0.040" thick brass Terminal screws: #8-32 steel, zinc plated Ground contact: 0.032" thick bronze Ground screw: N/A Assembly/mounting screws: Steel, zinc plated Cord clamp insert: N/A Cord clamp screws: N/A Cord clamp: N/A	Receptacle base: N/A Receptacle face: N/A Receptacle strap: N/A Plug/connector outer shell: 83: Urea 1264: Phenolic Interior body: 83: N/A, 1264: PVC Blades: 83: 0.062" thick brass, 1264: 0.058" thick brass Line contacts: 83: N/A, 1264: 0.016-0.020" thick brass Terminal clamps: N/A Terminal screws: 83: #10-32 brass, zinc plated, 1264: N/A Ground contact: N/A Ground screw: 83: #10-32 brass, zinc plated, green, 1264: N/A Assembly/mounting screws: 83: #8-32 steel, zinc plated, 1264: N/A Cord clamp insert: N/A Cord clamp screws: 83: #6-32 steel, zinc plated, 1264: N/A Cord clamp: 83: steel, zinc plated, 1264: N/A