

Decorator standard grade switches

Product description

Single-pole, 3-way, 4-way
15A, 120/277V/AC


Design features

- Thermoplastic rocker, top and backbody are virtually unbreakable, promising years of durable performance
- Ultrasonic welding and integrated construction of the strap and body provide superior integrity
- Backwire clamps on the side terminals provide for easy installation of #12 and #14 AWG wire
- Push-in terminals accept #14 AWG solid wire
- Stippled ground screw terminal standard
- 120/277V/AC rating ideal for fluorescent lighting fixtures and a broad variety of applications
- Long, broad mounting strap virtually eliminates floating installations
- Patented built-in wire stripper for #12 and #14 AWG wire to speed installation
- Tri-combo screws accept Slotted, Phillips, and Robertson-head tools for installation flexibility
- Lighted switches glow in "OFF" position



7501

Decorator switches

Rating					
A	V/AC	Description	Color suffix	Catalog no.	
15	120/277	Single-pole, back wire, push wire	A, B, BB, BK, GY, LA, SG, V, W	<input type="checkbox"/> 7501__	•
15	120/277	Auto-grounding single-pole, back wire, push wire	A, B, BB, BK, GY, LA, SG, V, W	<input type="checkbox"/> 7501-9__	•
15	120/277	3-way, back wire, push wire	A, B, BK, GY, LA, V, W	<input type="checkbox"/> 7503__	•
15	120/277	Auto-grounding 3-way, back wire, push wire	A, B, BK, GY, LA, V, W	<input type="checkbox"/> 7503-9__	•
15	120/277	4-way, back wire, push wire	A, B, BK, GY, LA, V, W	<input type="checkbox"/> 7504__	
15	120/277	Lighted single-pole, back wire, push wire	A, LA, V, W	<input type="checkbox"/> 7511__	
15	120/277	Lighted 3-way, back wire, push wire	A, LA, V, W	<input type="checkbox"/> 7513__	

cULus Listed to UL20, file no. E18704; 7504 also UL Listed to Federal Spec WS-896E

Color ordering information:

For ordering devices, include Catalog no. followed by the Color suffix: A (Almond), B (Brown), BB (Brushed Bronze), BK (Black), GY (Gray), LA (Light Almond), SG (Silver Granite), V (Ivory), W (White).

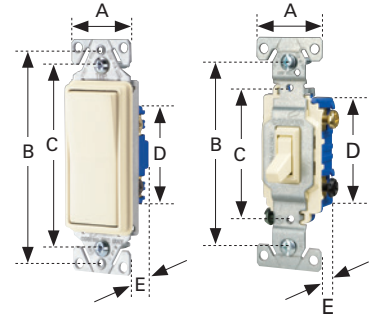
A	B	BB	BK	GY	LA	SG	V	W
(Almond)	(Brown)	(Brushed Bronze)	(Black)	(Gray)	(Lt. Almond)	(Silver Granite)	(Ivory)	(White)

Dimensional Information: B-68 **Specification Information:** Please visit www.cooperwiringdevices.com
Compliances, specifications and availability are subject to change without notice.

 Indicates NAFTA compliant - Page F-21

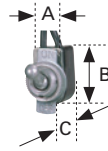
Switches

Family	A	B	C	D	E
Decorator standard grade, single-pole & 3-way	1.44" (36.6mm)	3.81" (96.8mm)	3.28" (83.3mm)	2.74" (69.6mm)	0.97" (24.6mm)
Decorator standard grade, 4-way	1.44" (36.6mm)	3.81" (96.8mm)	3.28" (83.3mm)	2.60" (66.1mm)	1.38" (35.1mm)
Heavy duty grade toggle	1.31" (33.3mm)	3.28" (83.3mm)	2.38" (60.5mm)	2.00" (50.8mm)	1.05" (26.7mm)
Standard grade toggle	1.31" (33.3mm)	3.28" (83.3mm)	2.38" (60.5mm)	2.13" (54.1mm)	0.88" (22.4mm)
Standard grade toggle, less ears	0.75" (19.1mm)	3.28" (83.3mm)	2.38" (60.5mm)	2.13" (54.1mm)	0.88" (22.4mm)
CO/ALR standard grade toggle	1.31" (33.3mm)	3.28" (83.3mm)	2.38" (60.5mm)	2.13" (54.1mm)	0.88" (22.4mm)



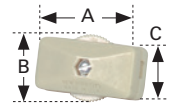
Circuit control switches

Catalog no.	A	B	C
452	0.50" (12.7mm)	0.88" (22.4mm)	0.53" (13.5mm)



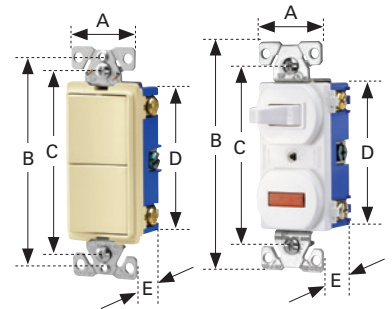
Feed-through cord switches

Catalog no.	A	B	C
410	1.35" (34.5mm)	0.91" (23.1mm)	0.55" (14.0mm)
933	2.49" (63.4mm)	1.47" (36.7mm)	1.25" (31.6mm)



Combination devices

Family	A	B	C	D	E
Decorator combination	1.30" (33.0mm)	3.81" (96.8mm)	3.28" (83.3mm)	2.65" (67.3mm)	1.08" (27.4mm)
Traditional combination	1.30" (33.0mm)	4.19" (106.4mm)	3.28" (83.3mm)	2.65" (67.3mm)	1.08" (27.4mm)
Nightlight combination	1.30" (33.0mm)	3.81" (96.8mm)	3.28" (83.3mm)	2.65" (67.3mm)	1.08" (27.4mm)



Duplex receptacle

Family or Catalog no.	A	B	C	D	E
Heavy duty grade tamper resistant	1.24" (31.5mm)	4.00" (101.6mm)	3.23" (82.0mm)	2.63" (66.8mm)	1.04" (26.4mm)
Decorator standard grade	1.30" (33.0mm)	3.81" (96.8mm)	3.28" (83.3mm)	2.12" (53.8mm)	0.69" (17.5mm)
Standard grade, except 298	1.31" (33.3mm)	4.19" (106.4mm)	3.28" (83.3mm)	2.63" (66.8mm)	0.69" (17.5mm)
298	1.31" (33.3mm)	4.19" (106.4mm)	3.28" (83.3mm)	2.63" (66.8mm)	0.74" (18.8mm)
CO/ALR standard grade	1.38" (35.1mm)	4.06" (103.1mm)	3.28" (83.3mm)	2.61" (66.3mm)	0.71" (18.0mm)

