

- Built-in patented wire stripper provides handy backup for misplaced tools
- Longer, wider strap provides 40% more contact area to wallboard, virtually eliminating floating installations
- Ultrasonic welded thermoplastic top and bottom housing eliminate call-backs due to job-site breakage
- Cam action mechanism inside for quiet switch action
- Built-in wire looper to speed termination of both #14 and #12 AWG wire
- Slotted, Phillips and Robertson Tri-combo screw heads offer greater installation flexibility



## Specific switch solutions for today's needs



### Aesthetic upgrades

Complete the look of a beautiful redecoration, renovation or new home with decorator switches that provide contemporary styling to coordinate perfectly with today's décor.

See page B-4

Shown:  
7503



### Device locator lighting

There are areas in every home where it is difficult to visually locate a switch in low-light or dark conditions. Lighted switches emit a soft glow that makes them easy to find without fumbling.

See page B-6

Shown:  
1301-7LT



### Aluminum wiring

There are many homes that still contain aluminum wiring. Hybrid copper & aluminum compatible (CO/ALR) switches are required for aluminum wiring.

See page B-7

Shown:  
5221-7



### Standard grade toggle switches

#### Product description

Single-pole, 3-way, 4-way  
15A, 120V/AC

#### Design features

- 3-way switches feature additional push-in common termination for feed-through tapping
- Push-in terminals accept #14 AWG solid wire only; side wire terminals accept up to #10 AWG solid wire
- Long, broad mounting strap virtually eliminates floating installations
- Patented built-in wire stripper for #12 and #14 AWG wire to speed installation
- Patented built-in wire looper for pre-looping
- Tri-combo screws accept Slotted, Phillips, and Robertson-head tools for installation flexibility
- Lighted models' toggle glows in "OFF" position



1303




1301-7




1301-73

#### Toggle switches, non-grounding

Rating		Description	Color suffix	Catalog no.	
A	V/AC				
15	120	Single-pole, side wire & push wire	B, LA, V, W	<input type="checkbox"/> 1301__	•
15	120	3-way, back wire, side wire & push wire	B, LA, V, W	<input type="checkbox"/> 1303__	•

cULus Listed to UL20, file no. E18704; 7504 also UL Listed to Federal Spec WS-896E

#### Toggle switches, grounding

Rating		Description	Color suffix	Catalog no.	
A	V/AC				
15	120	Single-pole, side wire & push wire	A, B, LA, V, W	<input type="checkbox"/> 1301-7__	•
		Single-pole, side wire & push wire, auto ground	A, B, LA, V, W	<input type="checkbox"/> 1301-9__	•
15	120	3-way, back wire, side wire & push wire	A, B, LA, V, W	<input type="checkbox"/> 1303-7__	•
		3-way, side wire & push wire, auto ground	A, B, LA, V, W	<input type="checkbox"/> 1303-9__	•
15	120	4-way, side wire & push wire	A, B, LA, V, W	<input type="checkbox"/> 1242-7__	
15	120	Single-pole, less ears, side wire & push wire	A, B, LA, W	<input type="checkbox"/> 1301-73__	•
15	120	Lighted, single-pole, side wire & push wire	LA, V, W	<input type="checkbox"/> 1301-7LT__	•
15	120	Lighted, 3-way, side wire & push wire	V, W	<input type="checkbox"/> 1303-7LT__	•

cULus Listed to UL20, file no. E18704; NOM certified. Lighted models also CSA certified to C22.2, no. 111

#### Color ordering information:

For ordering devices, include Catalog no. followed by the Color suffix: A (Almond), B (Brown), LA (Light Almond), V (Ivory), W (White).

A	B	LA	V	W
(Almond)	(Brown)	(Lt. Almond)	(Ivory)	(White)

**Dimensional information:** B-68

**Specification information:** Please visit [www.cooperwiringdevices.com](http://www.cooperwiringdevices.com)

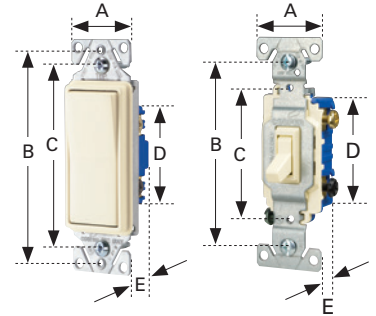
**Compliances, specifications and availability are subject to change without notice.**



Indicates NAFTA compliant - Page F-22

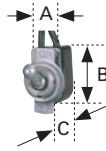
### Switches

Family	A	B	C	D	E
Decorator standard grade, single-pole & 3-way	1.44" (36.6mm)	3.81" (96.8mm)	3.28" (83.3mm)	2.74" (69.6mm)	0.97" (24.6mm)
Decorator standard grade, 4-way	1.44" (36.6mm)	3.81" (96.8mm)	3.28" (83.3mm)	2.60" (66.1mm)	1.38" (35.1mm)
Heavy duty grade toggle	1.31" (33.3mm)	3.28" (83.3mm)	2.38" (60.5mm)	2.00" (50.8mm)	1.05" (26.7mm)
Standard grade toggle	1.31" (33.3mm)	3.28" (83.3mm)	2.38" (60.5mm)	2.13" (54.1mm)	0.88" (22.4mm)
Standard grade toggle, less ears	0.75" (19.1mm)	3.28" (83.3mm)	2.38" (60.5mm)	2.13" (54.1mm)	0.88" (22.4mm)
CO/ALR standard grade toggle	1.31" (33.3mm)	3.28" (83.3mm)	2.38" (60.5mm)	2.13" (54.1mm)	0.88" (22.4mm)



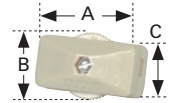
### Circuit control switches

Catalog no.	A	B	C
452	0.50" (12.7mm)	0.88" (22.4mm)	0.53" (13.5mm)



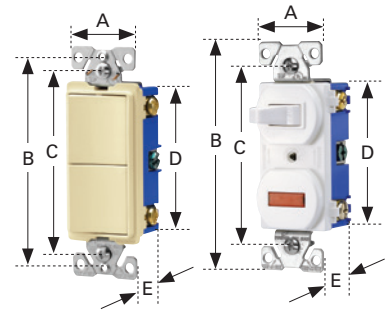
### Feed-through cord switches

Catalog no.	A	B	C
410	1.35" (34.5mm)	0.91" (23.1mm)	0.55" (14.0mm)
933	2.49" (63.4mm)	1.47" (36.7mm)	1.25" (31.6mm)



### Combination devices

Family	A	B	C	D	E
Decorator combination	1.30" (33.0mm)	3.81" (96.8mm)	3.28" (83.3mm)	2.65" (67.3mm)	1.08" (27.4mm)
Traditional combination	1.30" (33.0mm)	4.19" (106.4mm)	3.28" (83.3mm)	2.65" (67.3mm)	1.08" (27.4mm)
Nightlight combination	1.30" (33.0mm)	3.81" (96.8mm)	3.28" (83.3mm)	2.65" (67.3mm)	1.08" (27.4mm)



### Duplex receptacle

Family or Catalog no.	A	B	C	D	E
Heavy duty grade tamper resistant	1.24" (31.5mm)	4.00" (101.6mm)	3.23" (82.0mm)	2.63" (66.8mm)	1.04" (26.4mm)
Decorator standard grade	1.30" (33.0mm)	3.81" (96.8mm)	3.28" (83.3mm)	2.12" (53.8mm)	0.69" (17.5mm)
Standard grade, except 298	1.31" (33.3mm)	4.19" (106.4mm)	3.28" (83.3mm)	2.63" (66.8mm)	0.69" (17.5mm)
298	1.31" (33.3mm)	4.19" (106.4mm)	3.28" (83.3mm)	2.63" (66.8mm)	0.74" (18.8mm)
CO/ALR standard grade	1.38" (35.1mm)	4.06" (103.1mm)	3.28" (83.3mm)	2.61" (66.3mm)	0.71" (18.0mm)

