

Straight Blade Plugs & Connectors for Any Application

Arrow Hart's extensive offering of straight blade plugs and connectors cover the full range of Hospital, Industrial and Commercial Specification Grades for applications where quality and durability are critical

Features & Benefits**Hospital Specification Grade Plugs & Connectors**

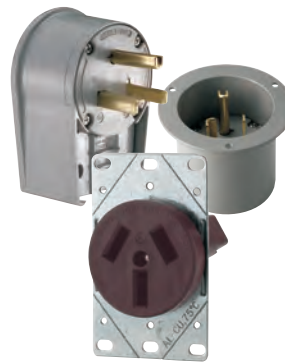
Built to meet and exceed UL Federal Specification and Hospital Grade testing, Arrow Hart's Hospital Grade Plugs and Connectors assure reliable performance in the most demanding healthcare applications.

**Industrial Specification Grade Plugs, Connectors, Flanged Inlet & Flanged Outlets**

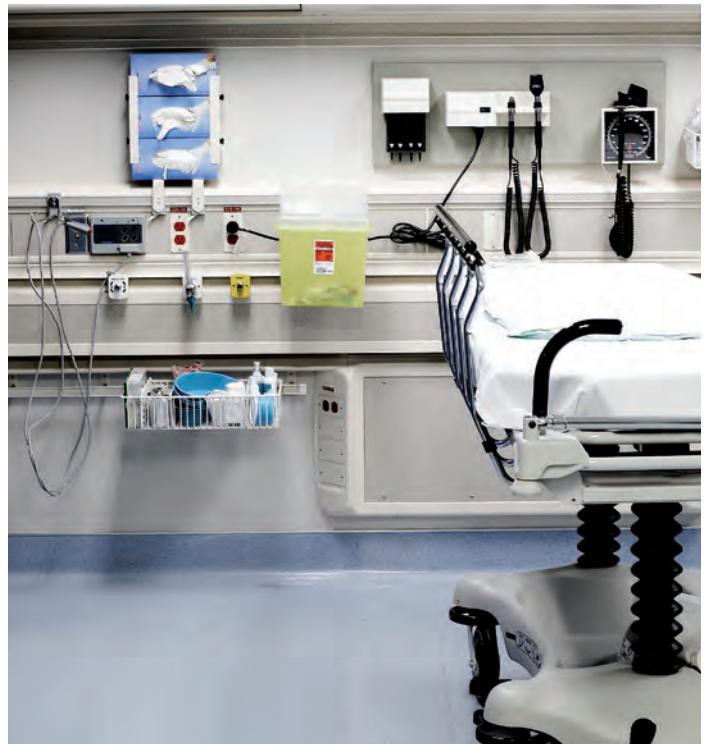
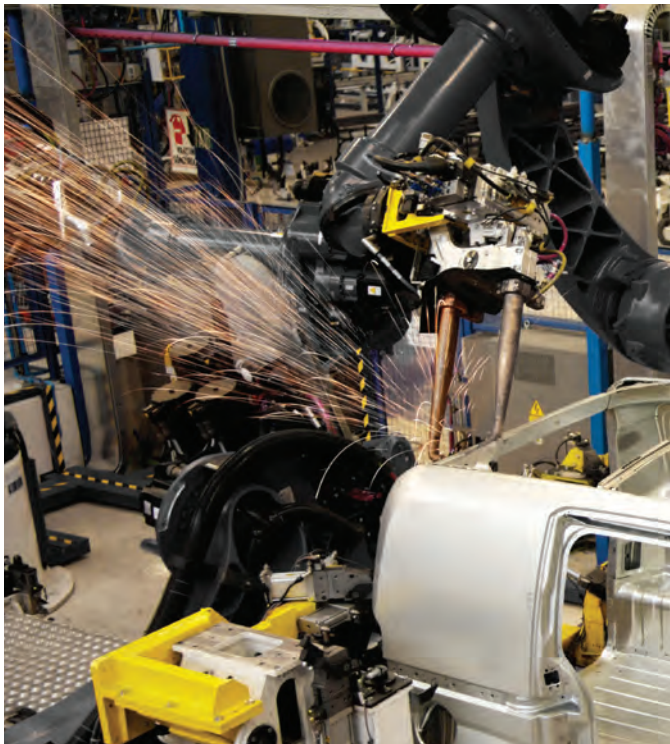
With a variety of styles including SafetyGrip, AutoGrip and QuickGrip, these devices are designed to install quickly and easily and provide reliable performance in tough industrial environments.

**Commercial Specification Grade Straight Blade Plugs & Connectors**

Designed for light commercial applications, where ease-of-use, value and quality are critical.

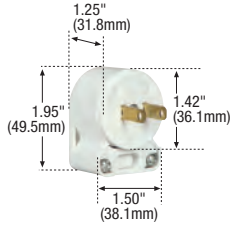
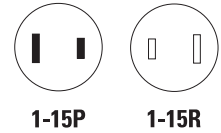
**Specification Grade Straight Blade Power Devices**

Heavy duty design and construction make Arrow Hart power devices ideal for any high amperage industrial or commercial power connectivity application.

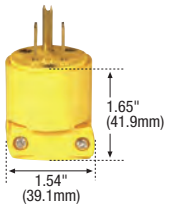


**Commercial Grade
Straight Blade
Plugs & Connectors**

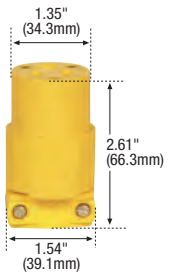
2-Pole, 2-Wire Non-Grounding
15A, 125V/AC
NEMA 1-15



4862ANW



4867



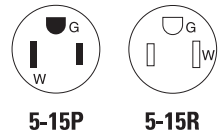
4887

Commercial Grade Plugs & Connectors								
Rating A	V/AC	Vinyl NEMA	Description	Cord Diameter	Color	Plug Catalog No.	Connector Catalog No.	
15	125	1-15	Vinyl Straight Body	0.25-0.66" (6.3-16.6mm)	Y	□ 4862	□ 4882†	•
			Vinyl Angled Body	0.25-0.66" (6.3-16.6mm)	W	□ 4862ANW†	—	•

† Not Nom Cert.

**Commercial Grade
Straight Blade
Plugs & Connectors**

2-Pole, 3-Wire Grounding
15A, 125V/AC
NEMA 5-15



Commercial Grade Plugs & Connectors								
Rating A	V/AC	Vinyl NEMA	Description	Cord Diameter	Color	Plug Catalog No.	Connector Catalog No.	
15	125	5-15	Vinyl Straight Body	0.25-0.66" (6.3-16.6mm)	Y	□ 4867	□ 4887	•
			Vinyl Angled Body	0.25-0.66" (6.3-16.6mm)	Y	□ 4867AN	—	•
			Vinyl Angled Body	0.25-0.66" (6.3-16.6mm)	W	□ 4867ANW	—	•

Commercial Grade Dimensional Information: B-15

Specification Information: Commercial Grade Plugs & Connectors: B-24

Color Information:
W (White), Y (Yellow)



Specifications and availability are subject to change without notice.

Indicates NAFTA Compliant - Page R-30

Nylon Shell Flanged Inlets

Family	A	B	C
Industrial Grade	2.56" (65.0mm)	1.84" (46.7mm)	1.71" (43.4mm)



Nylon Shell Flanged Outlets

Family	A	B	C
Industrial Grade	2.56" (65.0mm)	1.84" (46.7mm)	1.71" (43.4mm)



Metal Shell Flanged Inlets

Family	A	B	C
Industrial Grade	2.00" (50.8mm)	1.43" (36.3mm)	1.62" (41.1mm)



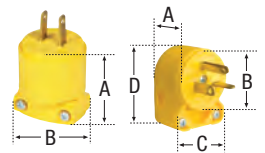
Metal Shell Flanged Outlets

Family	A	B	C
Industrial Grade	2.06" (52.3mm)	1.50" (38.1mm)	1.09" (27.7mm)



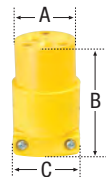
Commercial Plugs

Family	A	B	C	D	Cord Diameter
Commercial Grade	1.65" (41.9mm)	1.54" (39.1mm)	-	-	0.25-0.66" (6.4-16.6mm)
Commercial Grade Angled	1.25" (31.8mm)	1.42" (36.1mm)	1.50" (38.1mm)	1.95" (49.5mm)	0.25-0.66" (6.4-16.6mm)



Commercial Connectors

Family	A	B	C	Cord Diameter
Commercial Grade	1.35" (34.3mm)	2.61" (66.3mm)	1.54" (39.1mm)	0.25-0.66" (6.4-16.6mm)



Specifications and availability are subject to change without notice.

**Commercial Grade
Plugs & Connectors**

2-Pole, 3-Wire Grounding & 2-Pole, 2-Wire Non-Grounding
15A, 125V/AC; 15A, 250V/AC; 20A, 125V/AC; 20A, 250V/AC
NEMA 5-15, 6-15, 5-20, 6-20, 1-15

Device Type		Commercial Grade Vinyl Plugs & Connectors, Straight Blade
Wiring Type		Back Wire
Testing & Code Compliance		• Listed to UL498, file no. E15012
		• CSA certified to C22.2, no. 42-99 file no. 2081 (6221-02)
		• NOM certified, except 4882, 4862ANW
Specifications: Environmental	Flammability	Meets UL94 requirements, V2 rated
	Temperature Rating	-20°C to 60°C (-4°F to 140°F)
Specifications: Electrical	Dielectric Voltage	Twice the device rating + 1000V per UL498
	Current Interrupting	Yes, at full-rated current
	Temperature Rise	Max. 30°C (86°F) after 50 cycles of overload @ 150% of rated current (DC)
Specifications: Mechanical	Terminal Accommodation	#18 - #12 AWG
	Voltage Ratings	Permanently marked on device
Materials:	Plug/Connector Outer Shell	Polypropylene
	Interior Body	Polypropylene, except 4220, 4880 Series: vinyl
	Terminal Retainer	Polypropylene
	Blades	0.058" thick brass
	Line Contacts	0.030" thick brass
	Terminal Clamps	Steel, zinc plated
	Terminal Screws	#6-40 steel, brass plated (hot) and zinc plated (neutral)
	Ground Screw	#6-40 steel, zinc plated, green
	Assembly Screws	Steel, zinc plated
	Cord Clamp Screws	Steel, zinc plated
Cord Clamp	Polypropylene	

Specifications and availability are subject to change without notice.