



Stainless Steel CXL with 52" Plus Series Brushed Nickel Blades | Model . . . **CXL52SS**  
 Blade . . . . **B552P-BN**  
 Light . . . . **Not Shown**

# CXL

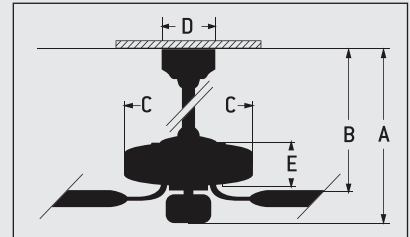
## FEATURES

- Heavy-Duty, 3 Speed Reversible Motor
- 2" and 6" Downrods (Included)
- Limited Lifetime Warranty
- Blades Sold Separately
- Light Kit Adaptable (Optional)
- Both TCS Controls Available (Optional)

## SPECS

- Blade Sweep Option. . . . . 44", 52", 54", 56"
- Number of Blades . . . . . 5
- Blade Pitch . . . . . 14°
- Motor Size (MM) . . . . . 188 x 15
- AMPS (HI Speed) . . . . . <1
- Watts (HI Speed) . . . . . 76
- Shipping Wt. (lbs.) . . . . . 17
- CU. FT. in Carton . . . . . 1.7
- Airflow\*  
(Cubic Feet Per Minute) . . . . . 6,503
- Airflow Efficiency\*  
(CFM Per Watt) . . . . . 86

## CEILING DROP DIMENSIONS



- A: 2" DR - 11.375"
- A: 6" DR" - 15.375"
- C: 11.5"
- E: 4.5"
- B: 2" DR - 9.5"
- B: 6" DR - 13.5"
- D: 5.125"
- DR = Downrod

"Compare: 36" to 48" ceiling fans have airflow efficiencies ranging from approximately 71 to 86 cubic feet per minute per watt at high speed."

"Compare: 49" to 60" ceiling fans have airflow efficiencies ranging from approximately 51 to 176 cubic feet per minute per watt at high speed."



POPULAR COMBINATIONS

CXL | TRADITIONAL STYLE



**A** Brushed Nickel CXL with 52" Plus Series Brushed Nickel Blades and Bowl Light Kit

Model-Finish **CXL52BN**  
Blade-Finish **B552P-BN**  
Light-Finish **LKE53CFL-BN**

**B** Aged Bronze Textured CXL with 54" Premier Distressed Walnut Blades and Light Kit

Model-Finish **CXL52AG**  
Blade-Finish **B554PD-WAL**  
Light-Finish **LK35CFL-AG**

**C** Oiled Bronze CXL with 52" Plus Series Walnut Blades

Model-Finish **CXL52OB**  
Blade-Finish **B552P-WB6**  
Light-Finish **Not Shown**

**D** White CXL with 56" Custom Carved Distressed White Blades

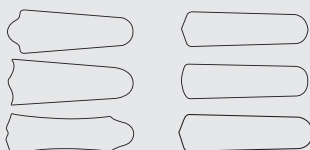
Model-Finish **CXL52W**  
Blade-Finish **B556C-T11**  
Light-Finish **Not Shown**

AVAILABLE FINISHES

- AB** Antique Brass
- AG** Aged Bronze Textured
- AW** Antique White
- BN** Brushed Nickel
- BR** Brown
- FB** Flat Black
- OB** Oiled Bronze
- PB** Polished Brass
- SS** Stainless Steel
- W** White

BLADE OPTIONS

**Type 1 Blades** (see pages 222-225)      **Type 2 Blades** (see pages 226-230)

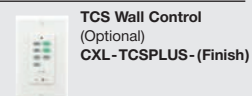
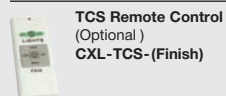


LIGHT KIT OPTIONS

**Bowl Light Kits** (see pages 242-246)      **Complete Light Kits** (see pages 246-248)      **Customize Your Own** (see pages 249-252)



REMOTES

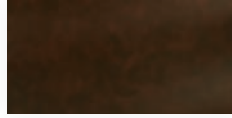


# Ceiling Fan

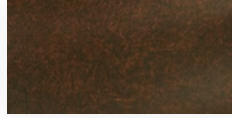
## FINISH OPTIONS



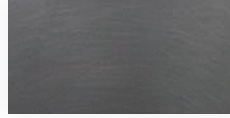
**AB**  
Antique Brass



**ABZ**  
Aged Bronze  
Brushed



**AG**  
Aged Bronze  
Textured



**AGV**  
Aged Galvanized



**AGVM**  
Aged Bronze/  
Vintage Madera



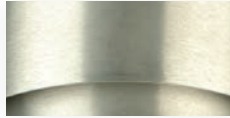
**AO**  
Athenian Obol



**AW**  
Antique White



**AWD**  
Antique White/  
Distressed



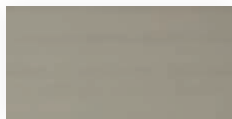
**BA**  
Brushed Aluminum



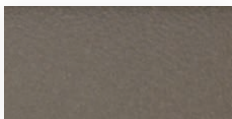
**BCW**  
Biscay Walnut



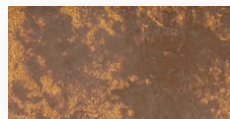
**BN**  
Brushed Satin Nickel



**BNK**  
Brushed Polished Nickel



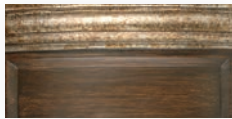
**BR**  
Brown



**BU**  
Burnt Sienna



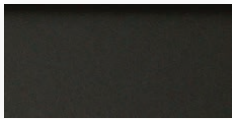
**CH**  
Chrome



**DCVM**  
Dark Coffee/  
Vintage Madera



**ESP**  
Espresso



**FB**  
Flat Black



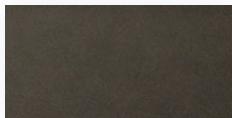
**FW**  
French White



**GV**  
Galvanized Steel



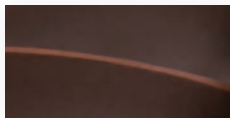
**LB**  
Legacy Brass



**OB**  
Oiled Bronze



**MWW**  
Matte White



**OBG**  
Oiled Bronze/  
Gilded



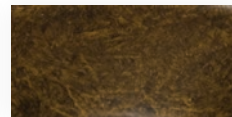
**OBMA**  
Oiled Bronze/  
Mahogany



**PB**  
Polished Brass



**PLN**  
Polished Nickel



**PR**  
Peruvian Bronze



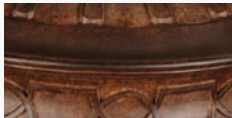
**PT**  
Pewter



**RI**  
Rustic Iron



**RT**  
Rust



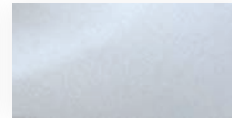
**SC**  
Sedona Clay



**SBZ**  
Spanish Bronze



**SS**  
Stainless Steel



**TI**  
Titanium



**TS**  
Tarnished Silver



**TW**  
Textured White



**W**  
White



**WP**  
Weathered Pine